



Owen
Isherwood
CHARTERED SURVEYORS

Netley House, Shere Road, Gomshall, Guildford, GU5 9QA

TO LET | 319 TO 1,055 SQ FT (29.64 TO 98.01 SQ M)

Character Offices within Grade II Listed Building

- Fully Fitted Lower Ground Floor Offices
- Grade 2 Listed Building in Private Ground
- Inclusive Rental Fee
- On Site Parking
- Just Off A25 Guildford to Dorking Road



Location

Netley House is in a very picturesque location on the Southern side of the North Downs, close to the villages of Gomshall and Shere. The house is just off the A25 Guildford to Dorking road, both towns being approximately 6.5 miles away.

Description

Netley House is a three storey Grade 2 listed building set in approximately 10 acres. The available space comprises one of three offices on the lower ground floor with shared kitchen, WCs and shower facilities. A meeting room and secretarial services are available at additional cost. There is onsite parking.

Accommodation

Name	sq ft	sq m	Availability
Lower Ground - Office 1	319	29.64	Available
Lower Ground - Office 2	417	38.74	Available
1st - Office 1	414	38.46	Available
1st - Office 2	319	29.64	Available
Total	1,469	136.48	

Terms

Licence

Rent

£795 - £3,050 per month The fee is inclusive of business rates, heating, utilities, reception services, cleaning, building insurance, parking

Rates & Charges

EPC

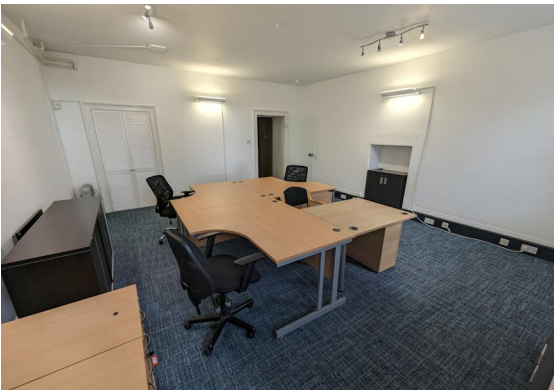
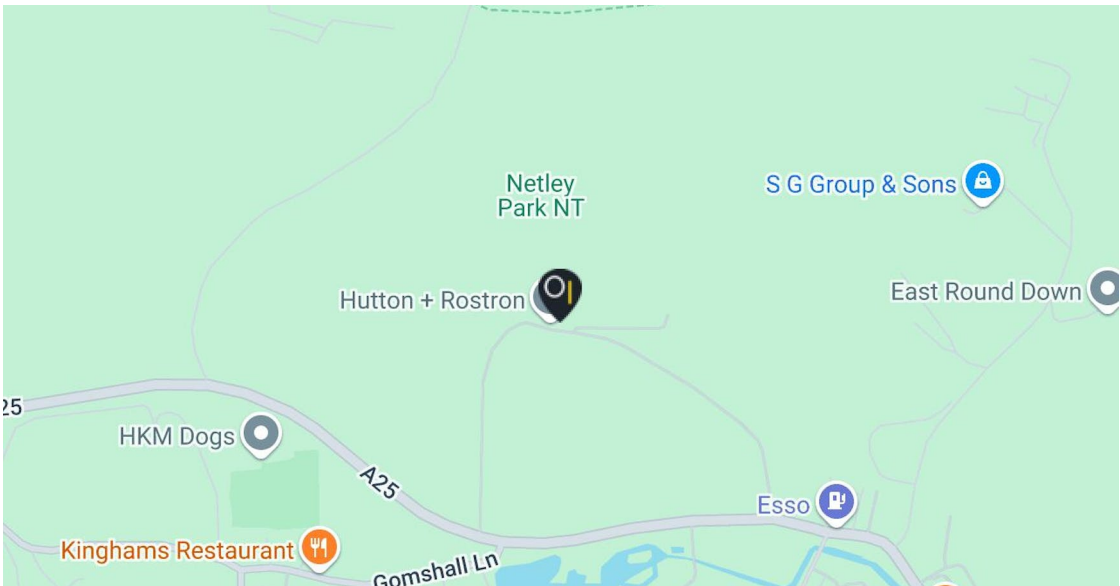
EPC exempt - Listed building

Availability

Netley House is available for use during office hours of 07:30 to 19:30 Monday to Friday. Netley House is closed over the Christmas and New Year period and on bank holidays.

Legal costs

Each party to bear their own legal costs incurred in the transaction.



Contact

Kieran Morgan

T: 07904377405

M: 01483 300176

E: Kieran@owenisherwood.com

Emma Pestle

T: 01483 300176

E: emma@owenisherwood.com

owenisherwood.com | 01483 300 176

1 Wey Court. Mary Road, Guildford, Surrey GU1 4QU

These particulars do not constitute, or form any part of, any offer or contract, and whilst all the information given is believed to be correct, all interested parties must satisfy themselves of its accuracy. All prices and rents are quoted exclusive of VAT, unless otherwise stated