



**Flat 29, 260 Field End Road, Ruislip**

Ruislip

Offers Over **£295,000**

**Lr** LAWRENCE RAND

# Flat 29

260 Field End Road, Ruislip

This larger style, stunning one bedroom apartment is located on the first floor; boasting a spacious and airy layout ideal for contemporary living. The property comprises a large double bedroom, providing ample space for relaxation and storage. The modern open plan living area is designed to maximise natural light, creating an inviting and comfortable ambience. The apartment is in pristine condition throughout, offering discerning buyers a luxurious and sophisticated living space.

Council Tax band: C

Tenure: Leasehold

EPC Energy Efficiency Rating: D

EPC Environmental Impact Rating: D

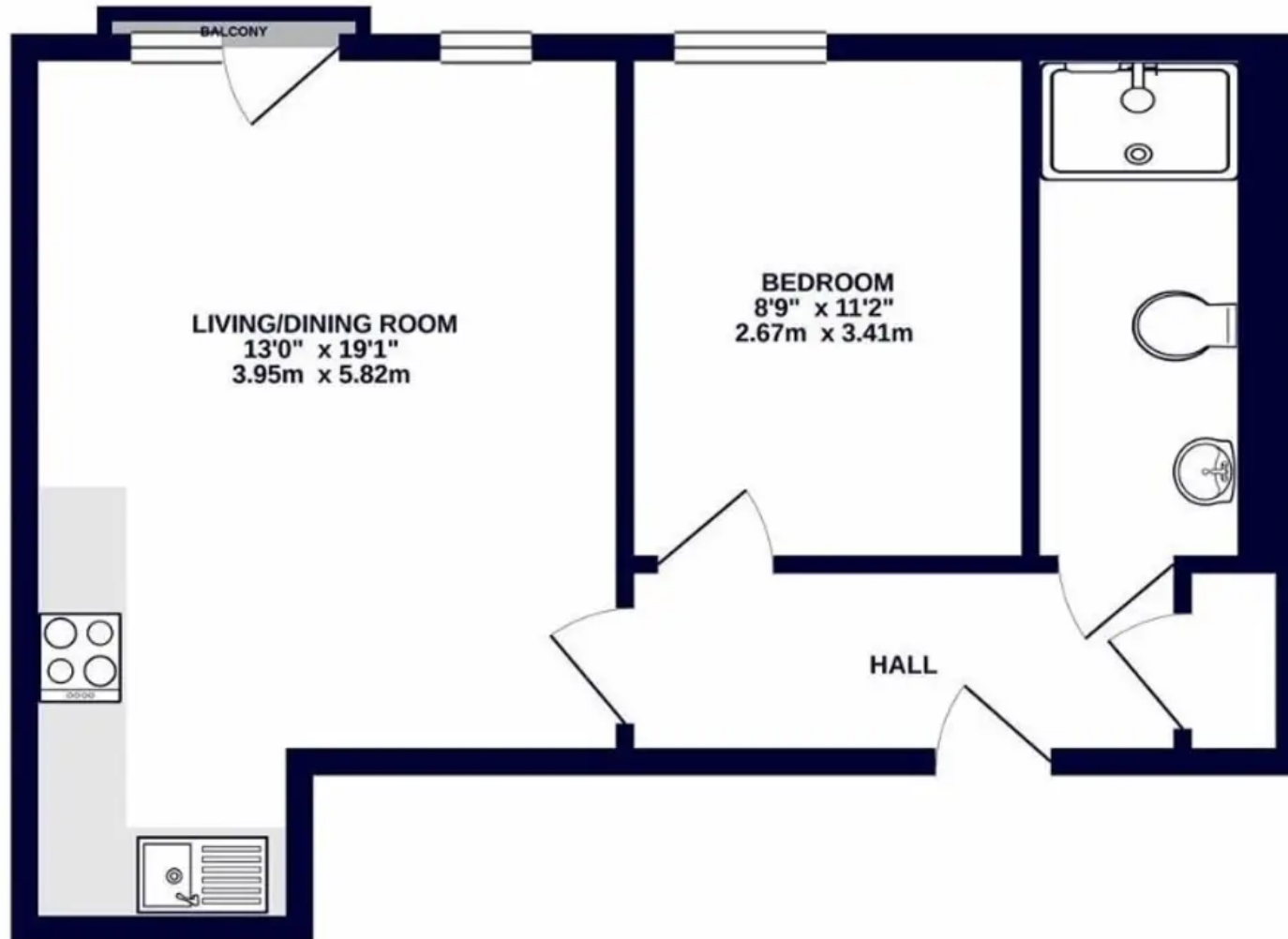
- First floor apartment
- Large double bedroom
- Modern open plan living
- Secure gated parking
- Pristine condition throughout
- Ultra convenient location
- Long lease



Lr LAWRENCE RAN

Lr LAWRENCE RAN

435 sq.ft. (40.4 sq.m.) approx.





## Lawrence Rand

Lawrence Rand, 106 Victoria Road - HA4 0AL

01895 632211

[Info@lawrence-rand.co.uk](mailto:Info@lawrence-rand.co.uk)

[www.lawrence-rand.co.uk/](http://www.lawrence-rand.co.uk/)



**LAWRENCE RAND**