



Apt 6, Ashcroft Court, 184 Liverpool Road

£107,000 Leasehold

Newly refurbished • Ideal for first time buyers • 1st floor • Two bedrooms • Open plan dining/kitchen/lounge • Close to local amenities

Newly refurbished 1st floor apartment with open-plan living, modern kitchen, 2 bedrooms, bathroom, and ample storage. Bright and cosy with parking. Ideal for first-time buyers or professionals. Arrange a viewing and start your new chapter now!

Council Tax band: A

Tenure: Leasehold

EPC Energy Efficiency Rating: C

EPC Environmental Impact Rating: C



- › Newly refurbished
- › Ideal for first time buyers
- › 1st floor
- › Two bedrooms
- › Open plan dining/kitchen/lounge
- › Close to local amenities



Council Tax band: A

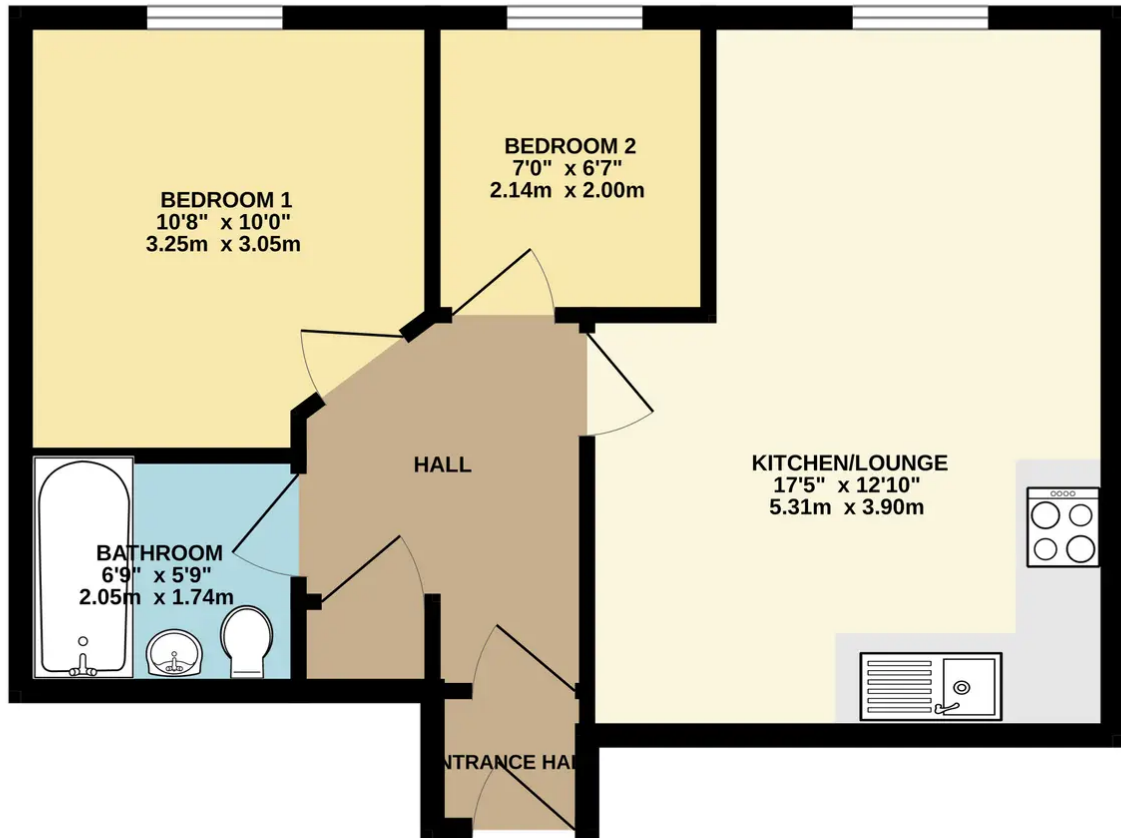
Tenure: Leasehold

EPC Energy Efficiency Rating: C

EPC Environmental Impact Rating: C



GROUND FLOOR
460 sq.ft. (42.7 sq.m.) approx.



TOTAL FLOOR AREA : 460 sq.ft. (42.7 sq.m.) approx.

Whilst every attempt has been made to ensure the accuracy of the floorplan contained here, measurements of doors, windows, rooms and any other items are approximate and no responsibility is taken for any error, omission or mis-statement. This plan is for illustrative purposes only and should be used as such by any prospective purchaser. The services, systems and appliances shown have not been tested and no guarantee as to their operability or efficiency can be given.
Made with Metropix ©2023

You can include any text here. The text can be modified upon generating your brochure.