




Andrew Pearce
PINNER

PINNER COURT, PINNER , HA5 5RL OIRO £400,000



Andrew Pearce are delighted to present this Art Deco styled three bedroom apartment in the highly desirable Pinner Court

The accommodation comprises a spacious hallway with secure entry phone, leading to a double aspect front reception/lounge with views over the central fountain. This room has a feature fireplace, original flooring and ceiling spotlights. A fitted kitchen with modern appliances boasts a range of eye level and base units, large larder space and has ample room for a breakfast table.

Furthermore there are three double bedrooms and a bathroom with art deco styled suite.

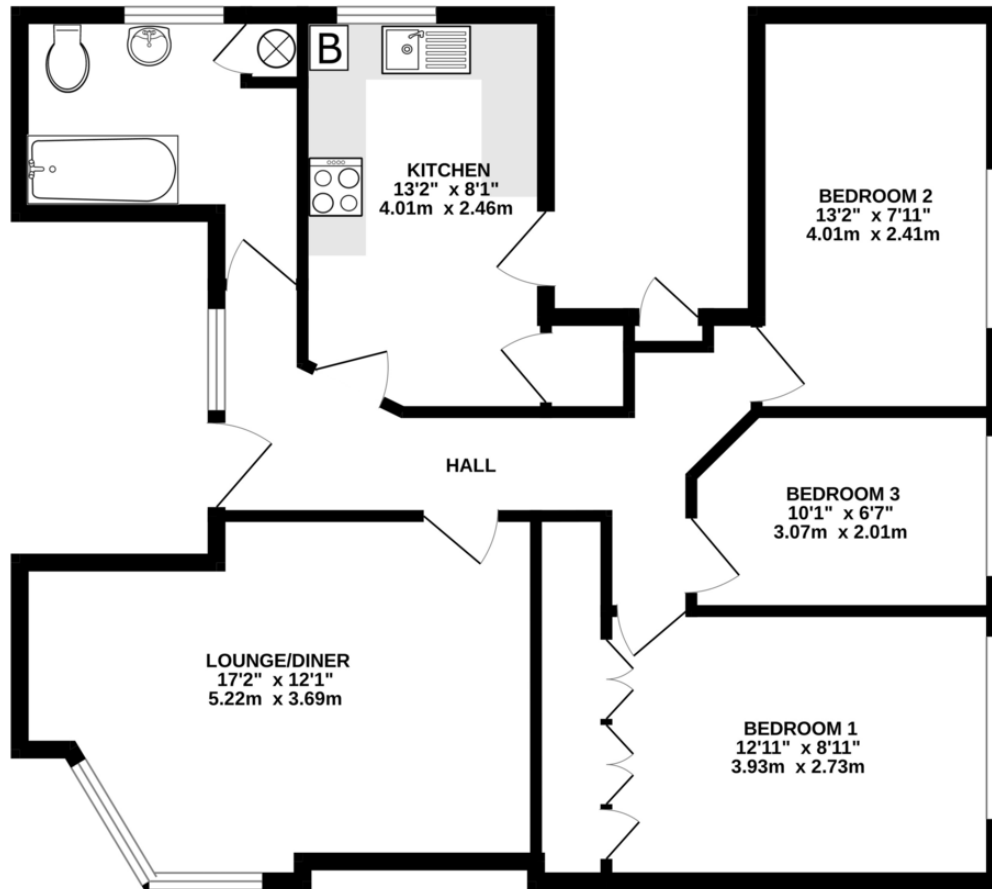
Pinner Court is an Art Deco/Moderne mansion block constructed in the 1930's, reportedly for the Hollywood movement that was popular at the time. The property has a central feature fountain, stunning communal grounds, secure gated parking and is within walking distance of Pinner & North Harrow Metropolitan Line Stations.

Nower Hill High School is close by, and the property is within an easy reach of local amenities such as Pinner High Street.



- 3 bedroom second floor apartment
- Well maintained Communal gardens with feature fountain & pond
- Ample off street resident parking
- Good condition
- Two separate entrances
- Leasehold with option to purchase share of freehold

2ND FLOOR
765 sq.ft. (71.1 sq.m.) approx.



TOTAL FLOOR AREA : 765 sq.ft. (71.1 sq.m.) approx.

Whilst every attempt has been made to ensure the accuracy of the floorplan contained here, measurements of doors, windows, rooms and any other items are approximate and no responsibility is taken for any error, omission or mis-statement. This plan is for illustrative purposes only and should be used as such by any prospective purchaser. The services, systems and appliances shown have not been tested and no guarantee as to their operability or efficiency can be given.

Made with Metropix ©2023



