



Asking Price £430,000

TENURE : LEASEHOLD

Maida Vale, London, W9

Bedrooms : 1

Bathrooms : 2

Reception Rooms : 1

Good condition

En-suite bathroom

**Excellent transport links
minutes away**

Modern 1 bed flat

Maida Vale/St Johns Wood

Little Venice canals

Metropole Properties
33 Southwick Street, London, W2 1JQ
sales@metropoleproperty.com | 02072625844
Website: metropoleproperty.com

METROPOLE
PROPERTIES

A great opportunity to buy this beautifully presented large one bedroom apartment situated on the first floor of a sought after purpose built mansion block in Maida Vale. This property is offered in good condition throughout and comprises of a large reception room, a separate fully fitted kitchen, a good sized bedroom with plenty of storage space and two bathroom.

Wellesley Court development is ideally located a short walk distance to the charming Little Venice canals and bustling Maida Vale highstreet and its wide variety of shops, cafes and restaurants and both Maida Vale and St Johns Wood local amenities.

Maida Vale Tube Station (Bakerloo Line) is only 2 minutes walk away with excellent transport links to The West End and The City.

This would definitely make an ideal First Time Buy or Buy To Let property. Early viewing is recommended!

Asking Price: £430,000 Subject To Contract

Leasehold remaining: 85years approx

Council Tax Band D - Westminster City £912.05 approx

1. AML regulations:

Intending purchasers will be asked to produce identification documentation at a later stage.

2. General:

While we endeavor to make our sales particulars accurate, fair, and reliable, these are only a description and general guide to the property. Kindly contact our office should you require further details or clarification before requesting a viewing and we will be pleased to check the position for you.

3. Particulars:

These particulars are issued in good faith. However, Particulars do not constitute representations of fact and do not form part of any offer or sale contract. The matters referred to in the particulars should be independently verified by prospective buyers.

4. Measurements:

The measurements indicated in the description and on the floor plans are supplied for guidance only and as such must be considered incorrect.

5. Services:

Please note that we have not tested the services or any of the appliances in this property. Therefore, we strongly advise prospective buyers to conduct their own surveys or service reports before finalizing their purchase.



Ground Floor

Approx. 51.3 sq. metres (552.2 sq. feet)



Total area: approx. 51.3 sq. metres (552.2 sq. feet)

49 Wellesley Court, LONDON

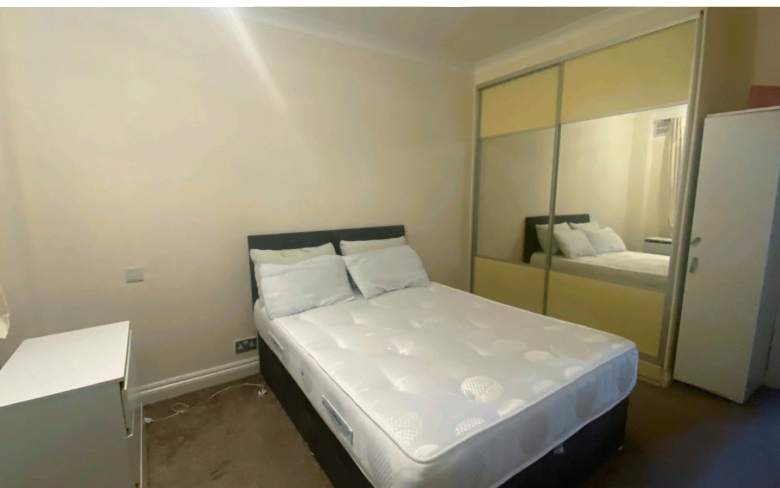
Metropole Properties

33 Southwick Street, London, W2 1JQ

sales@metropoleproperty.com | 02072625844

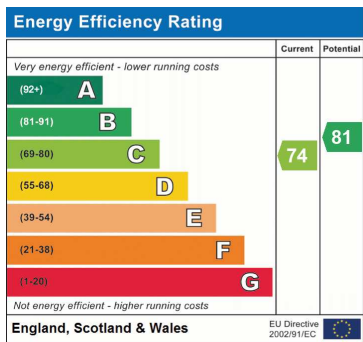
Website: metropoleproperty.com

METROPOLE
PROPERTIES



Metropole Properties
33 Southwick Street, London, W2 1JQ
sales@metropoleproperty.com | 02072625844
Website: metropoleproperty.com

METROPOLE
PROPERTIES



Address: Maida Vale, London, W9

Metropole Properties
 33 Southwick Street, London, W2 1JQ
 sales@metropoleproperty.com | 02072625844
 Website: metropoleproperty.com

METROPOLE
PROPERTIES