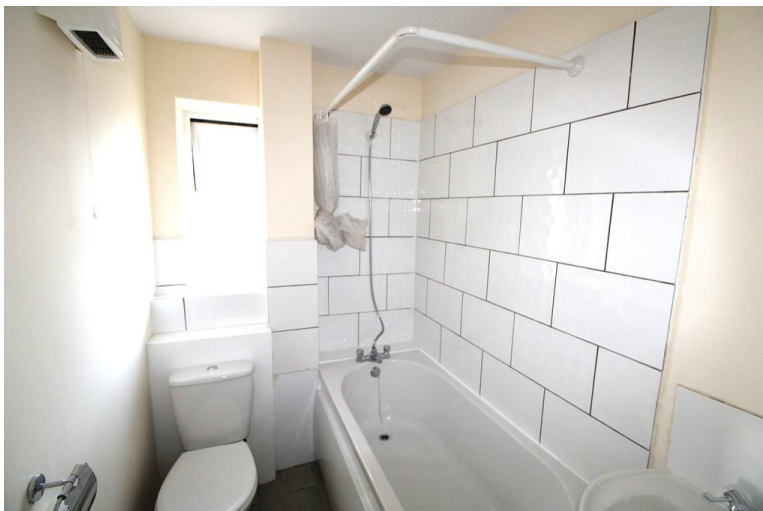




CLEARWATER, COLCHESTER, ESSEX, CO2

£750 PCM





Ezelet are delighted to offer to the rental market this first floor one bedroom flat, located close to local amenities and bus routes, this property comprises of a spacious lounge, kitchen, bathroom and one double bedroom. Further benefitting from having electric heating throughout and on road parking on a first come first serve basis. This property is offered unfurnished and is available now. An early viewing is advised to appreciate the accommodation to offer.

#### ENTRANCE HALL

Secure entrance door to stairs

#### LOUNGE

12' 7" x 12' 6" (3.84m x 3.81m) UPVC double glazed window to the front x 2, electric heater, wood effect flooring

#### KITCHEN

13' 3" x 6' 1" (4.04m x 1.85m) UPVC double glazed window to the rear, eye level and base units with over worktop, extractor fan, inset stainless steel sink, washing machine, space for Fridge/ freezer, integrated oven/ hob, wood effect flooring.

#### BEDROOM

13' 3" x 8' 5" (4.04m x 2.57m) PVC double glazed window to the rear, electric heater, wood effect flooring.

#### BATHROOM

Bath with over shower, low level wc, hand wash basin, electric wall heater, wood effect flooring.

#### PARKING

On road parking.

Rent: £750.00

Holding Deposit: £173.07

Security Deposit: £865.38

%epcGraph\_c\_1\_304%