



LAWRENCE RAND

West End Road, Ruislip

£725,000



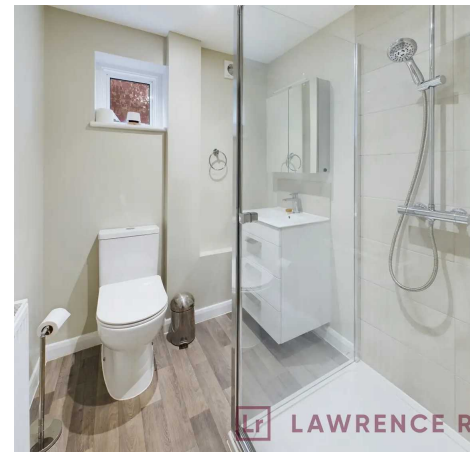
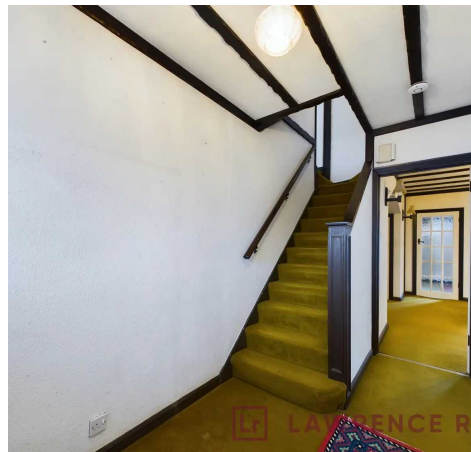
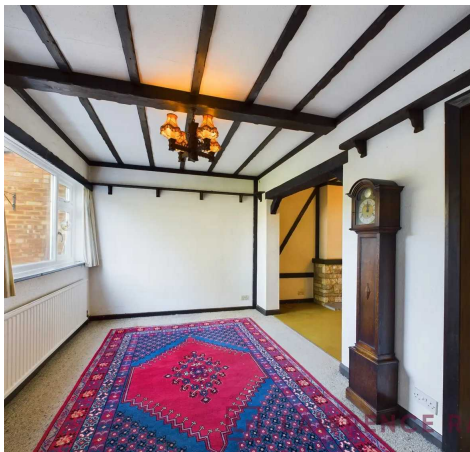
37 West End Road

Ruislip, Ruislip

In need of modernisation, this exceptionally spacious four-bedroom extended semi-detached house, is situated on this popular road in close proximity to Ruislip High Street. Council Tax band: E

Tenure: Freehold

- Four bedrooms
- Two bathrooms
- Integral garage
- Off street parking
- Close to Ruislip High Street
- In need of modernisation







Ground Floor



Floor 1

Approximate total area⁽¹⁾

1591.36 ft²

147.84 m²

(1) Excluding balconies and terraces

While every attempt has been made to ensure accuracy, all measurements are approximate, not to scale. This floor plan is for illustrative purposes only.

GIRAFFE 360



Lawrence Rand

Lawrence Rand, 106 Victoria Road - HA4 0AL

01895 632211

Info@lawrence-rand.co.uk

www.lawrence-rand.co.uk/



LAWRENCE RAND