


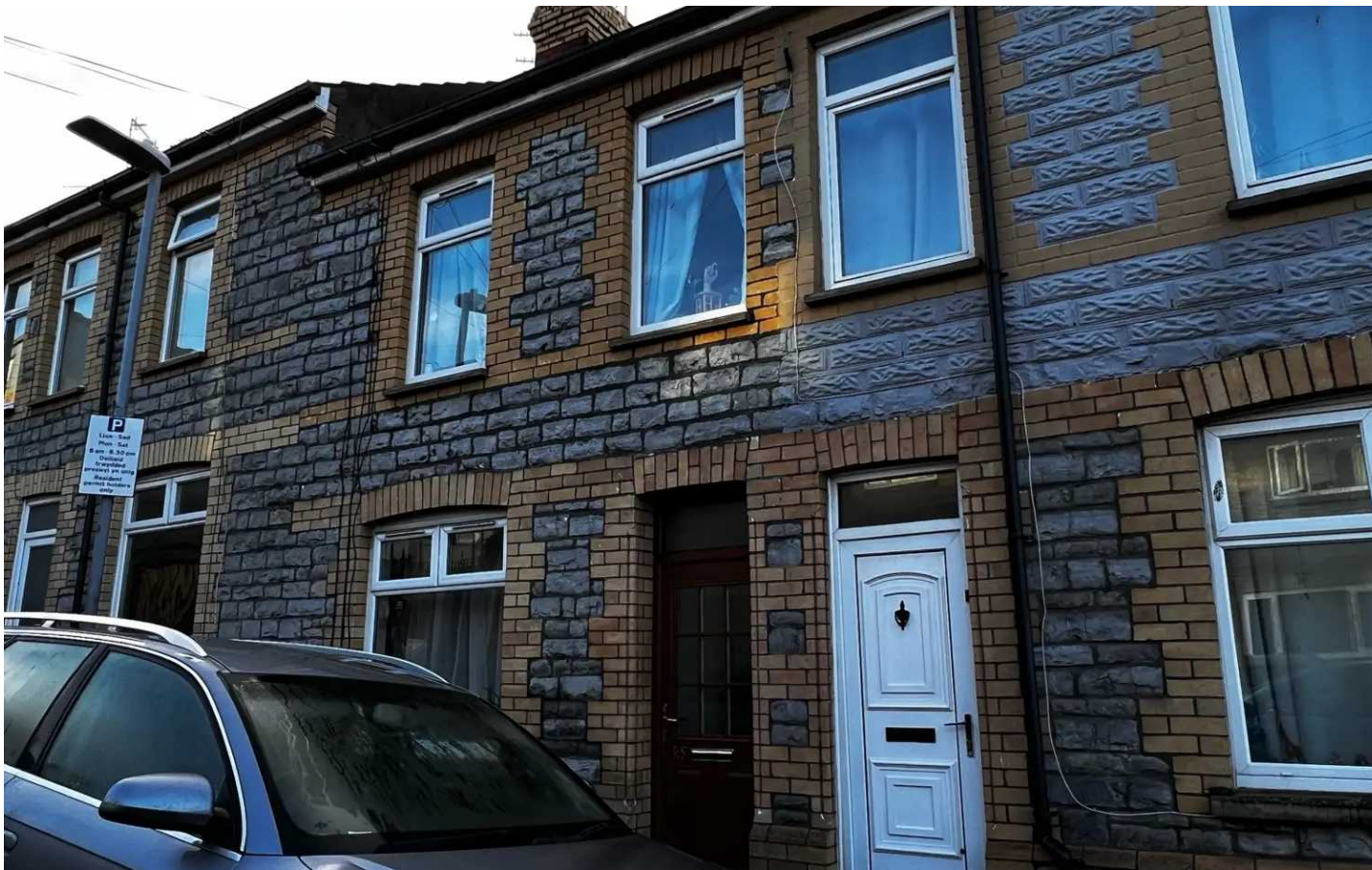


P
Licen - Sad
Pun - Sat
8 am - 6.30 pm
Dedidid
prawidid
Resident
gawidid
only



Chris Davies
residential sales & lettings

25 Belvedere Crescent, Barry
£165,000



25 Belvedere Crescent

Barry, Barry

This ideal starter home is located within the town centre and close to the rail station
Council Tax band: C

Tenure: Freehold

EPC Energy Efficiency Rating: D

EPC Environmental Impact Rating:

- TOWN CENTRE LOCATION
- THREE BEDROOMS
- GROUND FLOOR BATHROOM
- RECENT FITTED BOILER
- EPC D59





Entrance Porch

Accessed via front door. Open door access to lounge diner.

Lounge Dining Room

22' 8" x 13' 9" (6.91m x 4.19m)

Front aspect double glazed window and rear aspect single glazed window. Stairs to first floor. Two radiators. Large under stair storage. Door to kitchen.

Kitchen

9' 2" x 8' 8" (2.79m x 2.64m)

A range of eye level and base units with work surfaces over. Stand alone electric hob and oven. Space and plumbing for appliances. Leads to rear lobby.

Rear Lobby

Door to rear garden and bathroom.

Bathroom

6' 8" x 6' 6" (2.03m x 1.98m)

White bath and WC. Tiled splash backs. Wall mounted boiler. Single glazed rear aspect window. Radiator.

Landing

Carpeted with doors to three bedrooms. Loft hatch.



Bedroom One

12' 10" x 11' 8" (3.91m x 3.56m)

With two front aspect double glazed windows. Radiator.

Bedroom Two

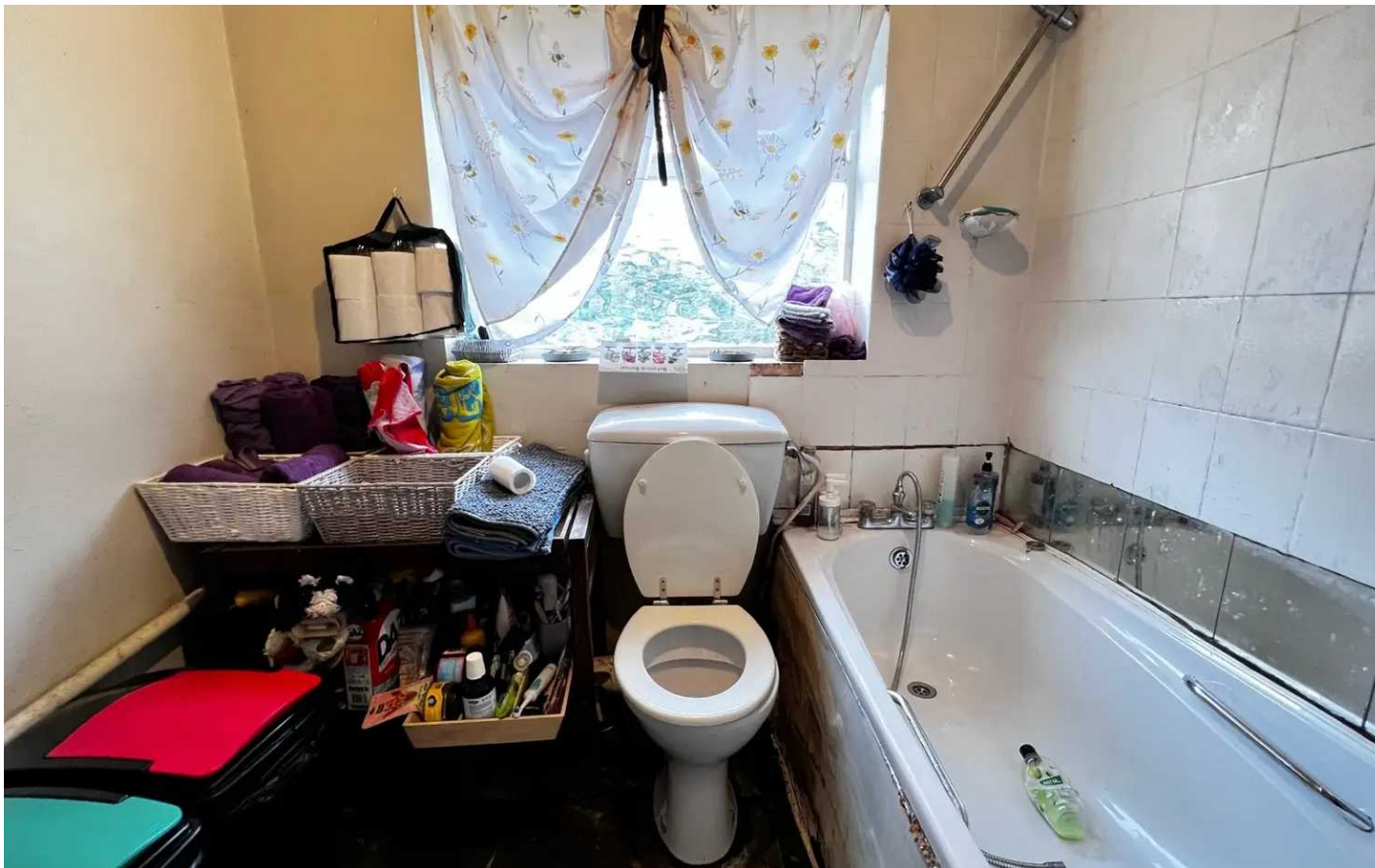
12' 3" x 8' 7" (3.73m x 2.62m)

Exposed wood floor and rear aspect single glazed window. Radiator.

Bedroom Three

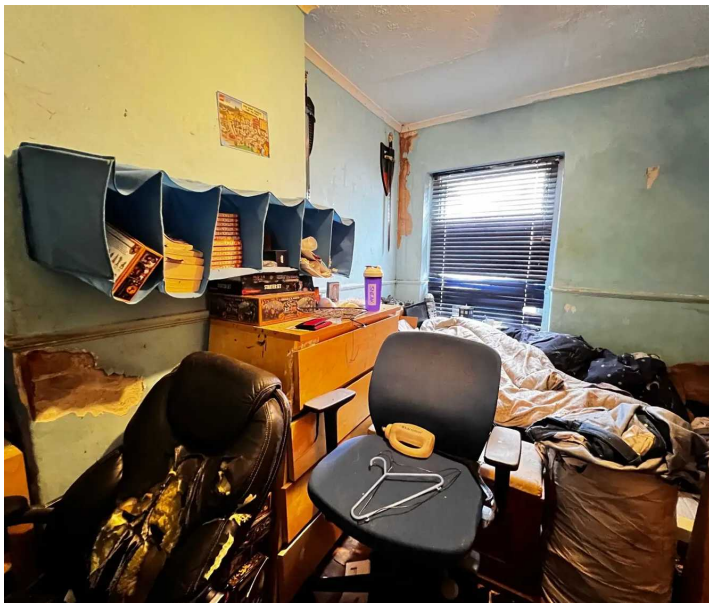
9' 10" x 7' 4" (3.00m x 2.24m)

Carpeted with rear aspect single glazed window. Radiator.



GARDEN

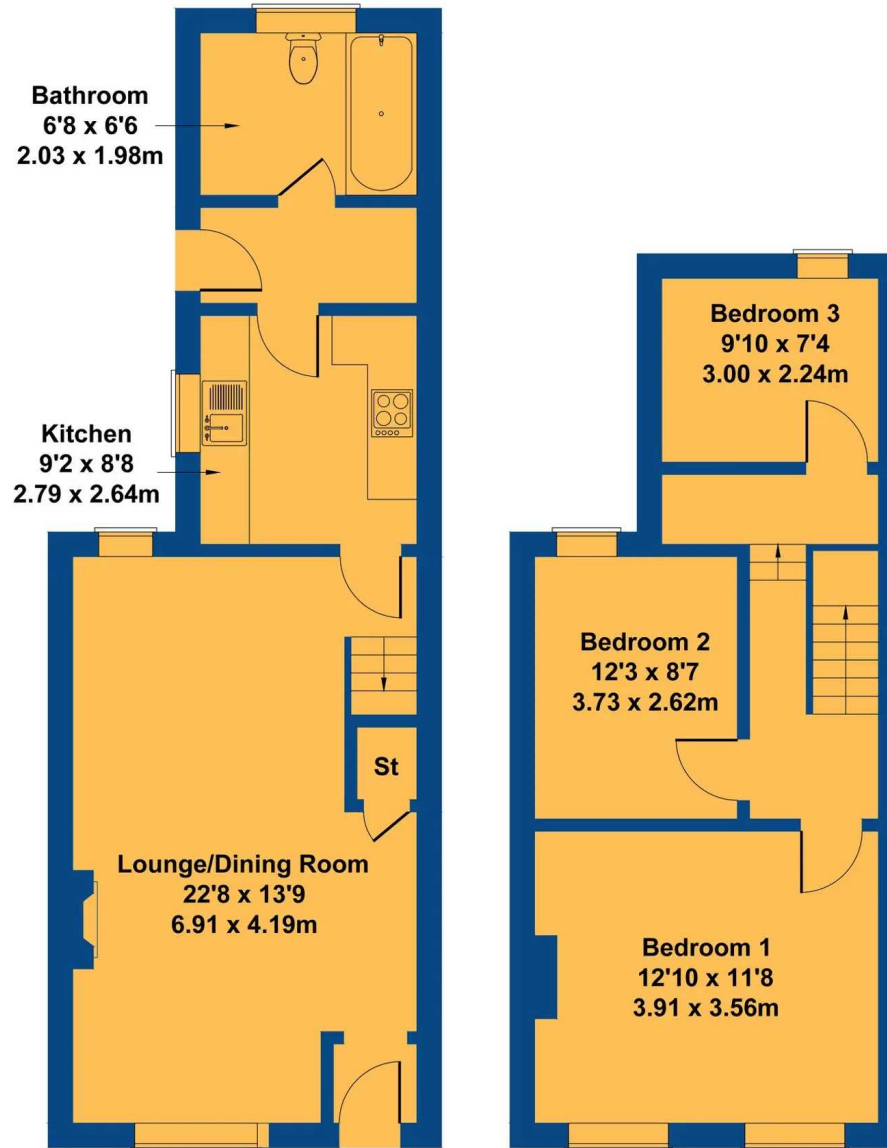
Small enclosed rear garden.



25 Belvedere Crescent

Approximate Gross Internal Area

904 sq ft - 84 sq m



GROUND FLOOR

FIRST FLOOR

Not to Scale. Produced by The Plan Portal 2023
For Illustrative Purposes Only.

