



**7 Great Chart Street, London**

**£400,000 Leasehold**

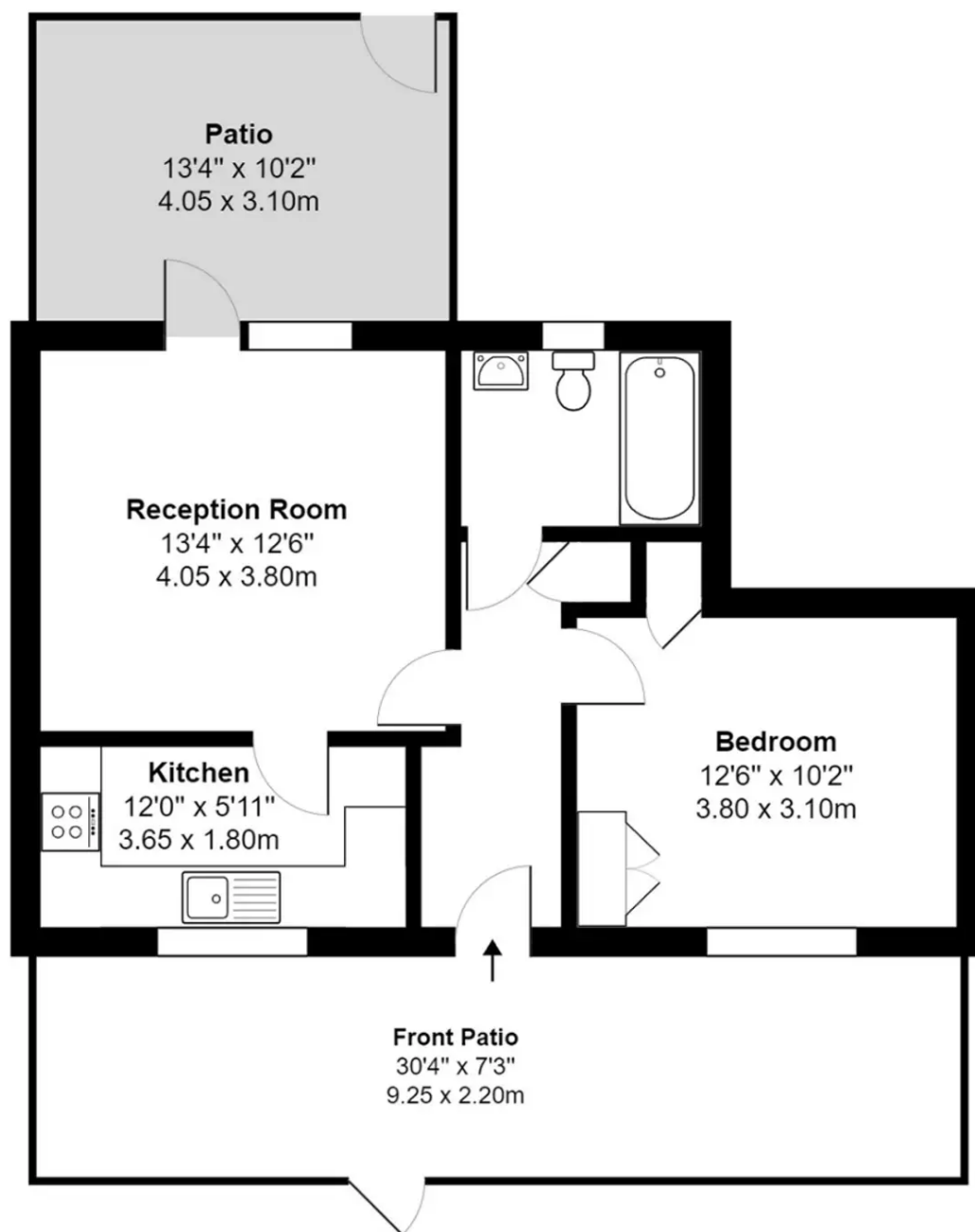
Council Tax band: C

Tenure: Leasehold



- › One Bedroom Apartment
- › Private Front & Rear Terraces
- › Allocated Parking Space
- › Gas Fired Central Heating
- › Beautifully Kept Communal Gardens
- › Fantastic Transport Links & Cycle Routes
- › Short Walk to the River
- › Long Leasehold





**Ground Floor**

**Great Chart Street London SW11  
Gross Internal Area 503sq ft / 46.7sq meters**

Whilst every attempt has been made to ensure the accuracy of the floorplan shown, all measurements, positioning fixtures fittings and any other data shown are an approximate interpretation for illustrative purposes only and are not to scale. No responsibility is taken for any errors, omission, miss-statement or use of data shown.  
Plan produced by AR Net Media - [www.arnetmedia.uk](http://www.arnetmedia.uk)