

Flat 11, 45 Streatham Hill, London

£400,000 Leasehold

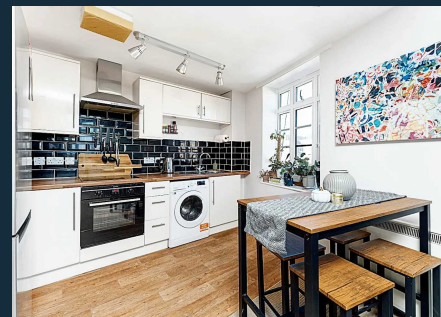


haboodle

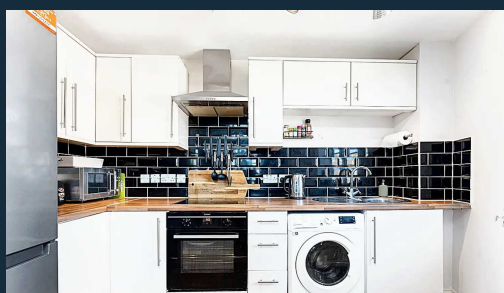
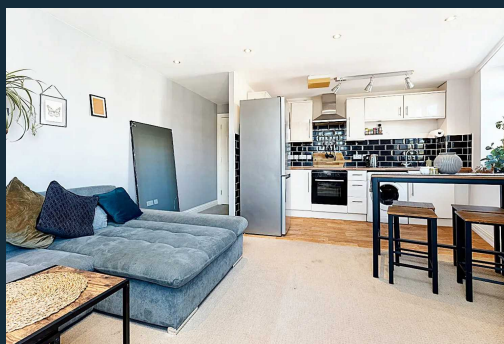
A well-located 2 double bedroom apartment offered with a long leasehold in a highly sought-after location. This spacious home boasts far-reaching views across London. The building has undergone recent refurbishments to the exterior including new double-glazed windows throughout.

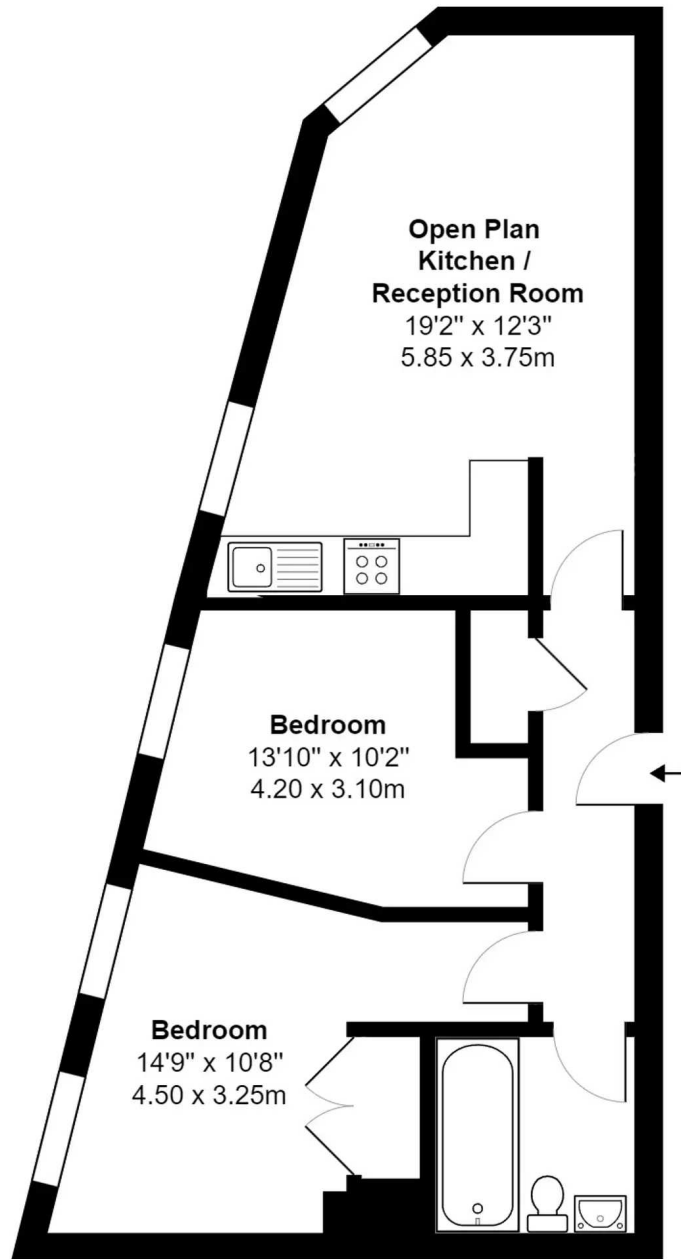
A secure entry system and a modern lift offer both security and convenience. Inside, the apartment there is an abundance of natural light that filters through all of the rooms. The property has an open-plan living and dining area and, a modern kitchen, two generous double bedrooms with triple-glazed windows, brilliant for first-time buyers looking for extra space or renting a room to help cover bills. A good-sized bathroom with stylish metro tiles and a shower over the bath.

The flat is well positioned with a huge variety of amenities all around. Streatham Hill train station (direct lines into London Victoria) is 0.2 miles away. Brixton tube station (Victoria line) is accessed via a variety of



- Two Double Bedrooms
- Long Leasehold
- Far reaching Views
- Recently Refurbished Communal Areas
- NEW Double Glazing Windows Throughout
- Secure Entry System





**Third Floor**

**Streatham Hill London SW2**  
**Gross Internal Area 602sq ft / 56sq meters**

Whilst every attempt has been made to ensure the accuracy of the floorplan shown, all measurements, positioning fixtures fittings and any other data shown are an approximate interpretation for illustrative purposes only and are not to scale. No responsibility is taken for any errors, omission, miss-statement or use of data shown.  
Plan produced by AR Net Media - [www.arnetmedia.uk](http://www.arnetmedia.uk)



Property Public Page



**haboodle**