



'Carmichael' Godstone Road

Bletchingley

£775,000

 halliwell
marks

Carmichael Godstone Road

The carriage drive sets the tone for this beautiful four-bedroom detached family home. Situated on the outskirts of Bletchingley Village, this property offers a peaceful and idyllic setting, while still providing easy access to nearby towns and the M25.

The interior of the property boasts a wealth of character features, including original fireplaces and stained glass windows. The ground floor comprises three reception rooms, offering ample space for entertaining and family gatherings. The light and airy sitting room, with its French doors opening out onto the rear patio, provides a seamless transition between indoor and outdoor living.

The large rear garden is truly a standout feature of this property, offering breathtaking views of the open countryside. Perfect for relaxing or socialising, the garden provides a tranquil retreat from the hustle and bustle of daily life. Nearby leisure pursuits include golf at Bletchingley Golf Club, tennis at Godstone Tennis Club, and walking at Bransland Wood.

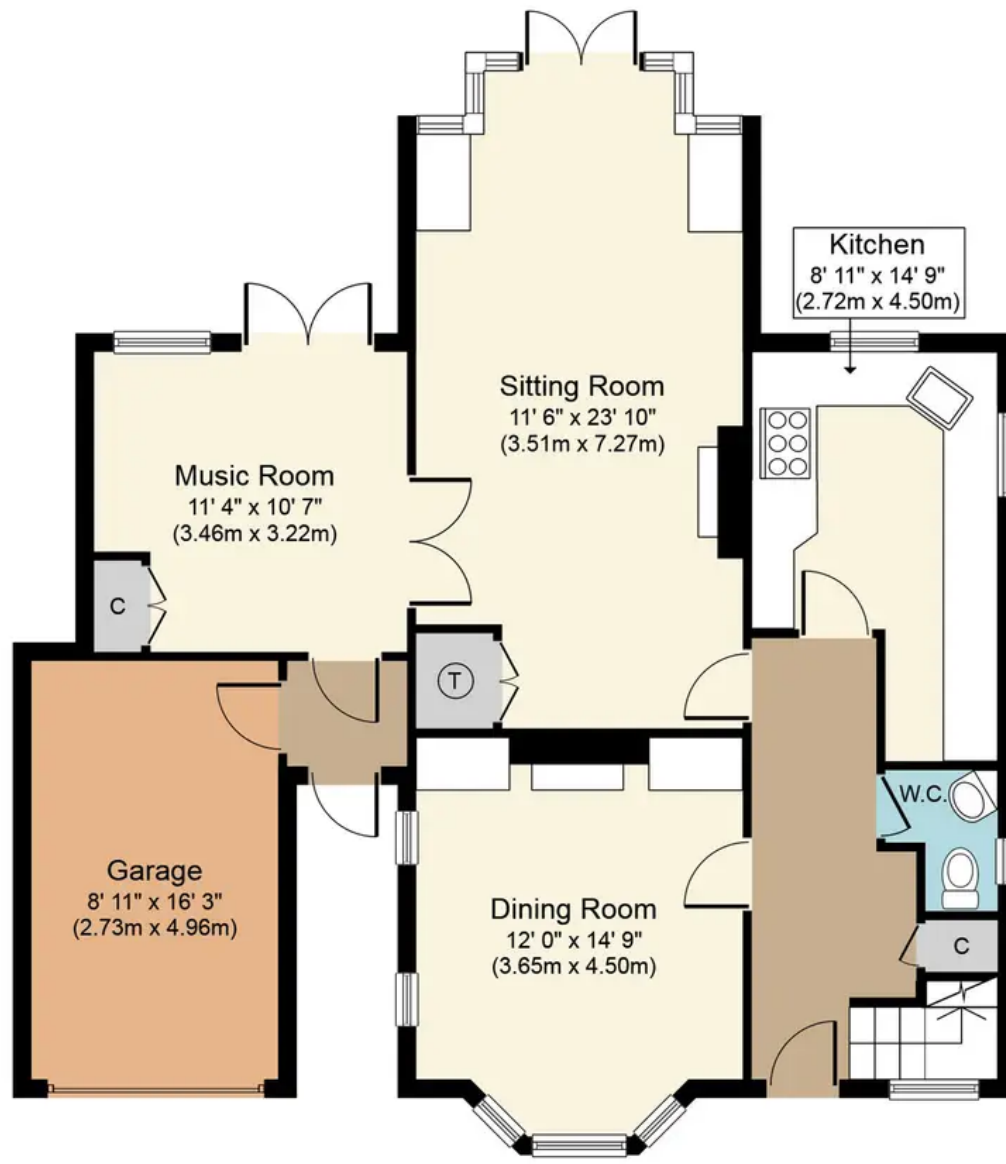
With its generous living space, beautiful gardens, and prime location, this four-bedroom detached house is the perfect family home. With easy access to Caterham, Oxted, Redhill, and the M25, as well as excellent transport links to London Gatwick Airport, this property has everything a discerning buyer could desire.

Council Tax band: F

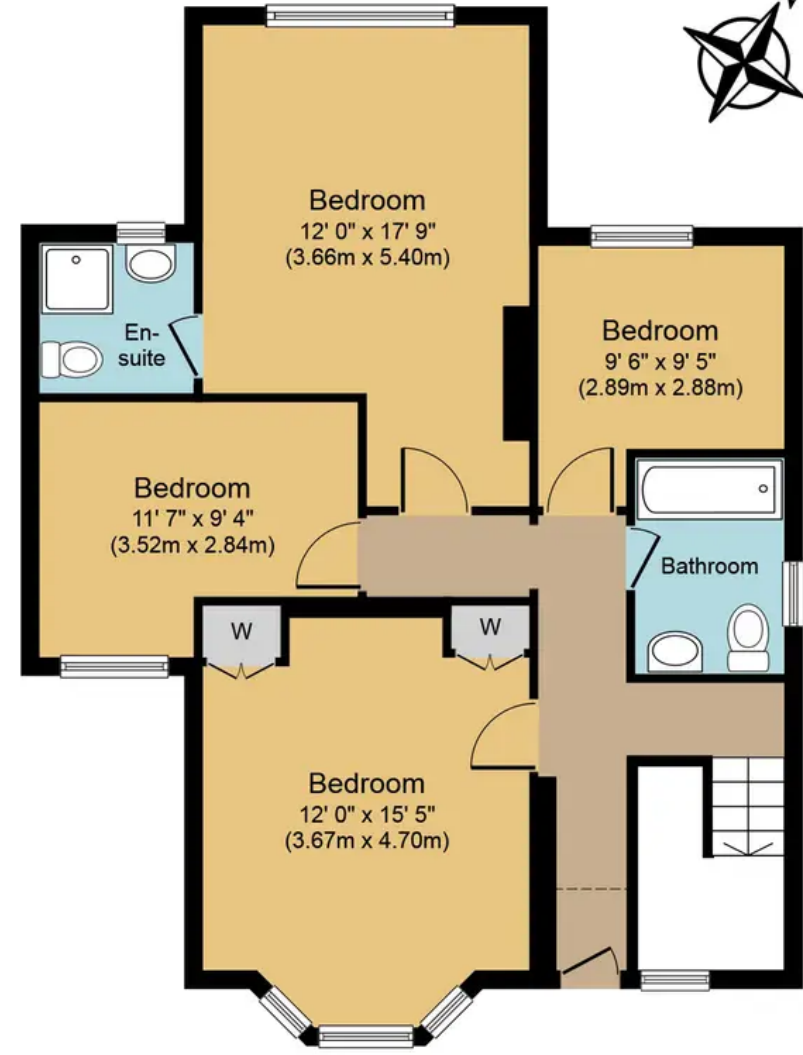
Tenure: Freehold







Ground Floor
Approximate Floor Area
964 sq. ft.
(89.6 sq. m.)



First Floor
Approximate Floor Area
750 sq. ft.
(69.7 sq. m.)

Godstone Road, RH1
Approx. Gross Internal Floor Area 1,715 sq. ft. (159.3 sq. m.)



Whilst every attempt has been made to ensure the accuracy of the floor plan contained here, measurements of doors, windows, rooms and any other items are approximate and no responsibility is taken for any error, omission, or mis-statement. The measurements should not be relied upon for valuation, transaction and/or funding purposes. This plan is for illustrative purposes only and should be used as such by any prospective purchaser or tenant. The services, systems and appliances shown have not been tested and no guarantee as to their operability or efficiency can be given.