



3 Bedroom Ground Floor Flat Guide Price £240,000

94 Redhouse Way, Redhouse , Swindon, Wiltshire , SN25 2AZ

**mcfarlane**  
property.com

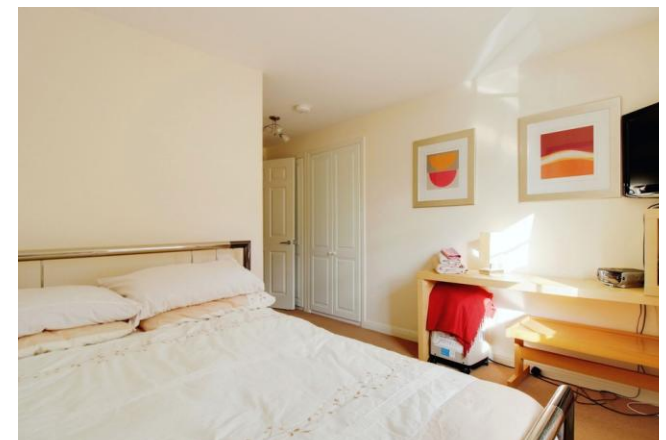
## 3 Bedroom Ground Floor Flat North Swindon

---

- No onward chain
  - Long lease 977 years remaining
  - Garage and allocated parking
  - Rarely available Three bedroom apartment
- 

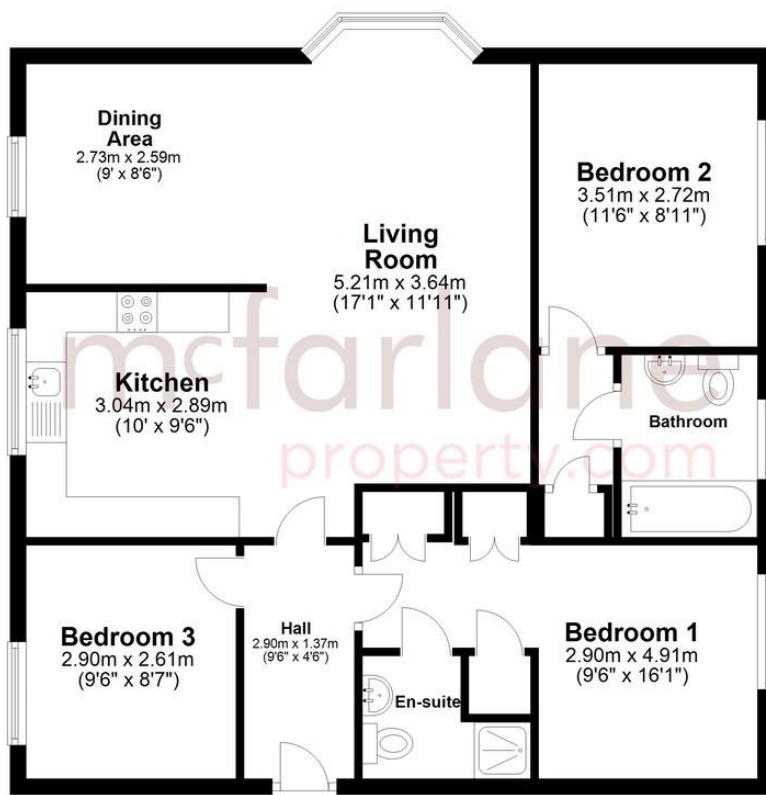
Available with NO ONWARD CHAIN and RARELY AVAILABLE THREE BEDROOM apartment, ex Bovis Show Home, situated on the ground floor has a long lease of 977 years remaining. It benefits from a MASTER EN-SUITE, large open plan living area with space for dining table, modern fitted kitchen with BARELY USED APPLIANCES, GARAGE and off road parking and Home security alarm. This property was only ever used as a weekend/holiday getaway so has never been live in full time and barely used at all!

Long lease with 977 years remaining  
Service charge and ground rent - T.B.C  
Council Tax Band C





**Ground Floor**  
Approx. 81.3 sq. metres (874.7 sq. feet)



Total area: approx. 81.3 sq. metres (874.7 sq. feet)

We   
where you  
**LIVE**

Our team are friendly, experienced and are all local. They know it better than they do their own living rooms and can help you find what you're looking for because **we love where we live.**

We would be delighted to show you around this property.

**Because every home needs a personal touch.**

**If you would like to view this property then please get in touch.**

📞 01793 296600

✉ swindon@mcfarlaneproperty.com

[mcfarlaneproperty.com](http://mcfarlaneproperty.com)

**mcfarlane**  
property.com

**Cricklade.**  
102 High Street  
Cricklade SN6 6AA  
📞 01793 751044

**Marlborough.**  
106 High Street  
Marlborough SN8 1LT  
📞 01672 514380

**Old Town.**  
28-30 Wood Street  
Swindon SN1 4AB  
📞 01793 296880

**Swindon.**  
The Village Centre,  
Redhouse SN25 2FW  
📞 01793 296600

Agents Note: Whilst every care has been taken to prepare these sales particulars, they are for guidance purposes only. All measurements are approximate are for general guidance purposes only and whilst every care has been taken to ensure their accuracy, they should not be relied upon and potential buyers are advised to recheck the measurements