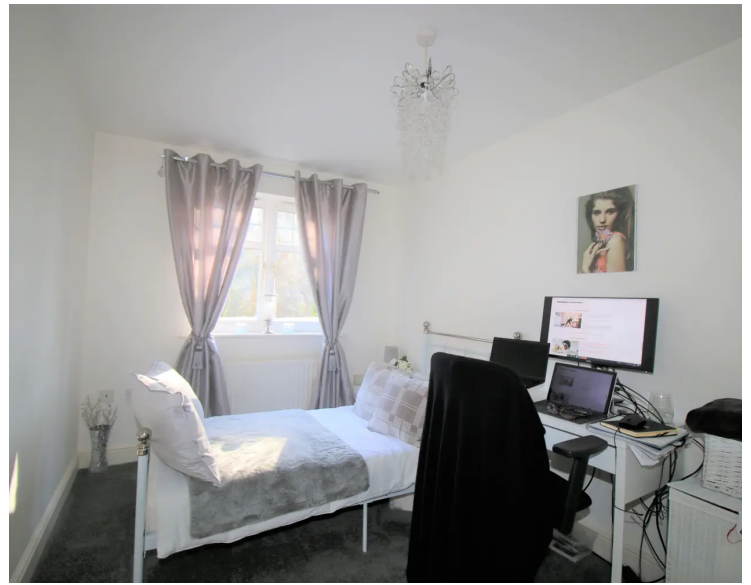




8 The Spires Eastfield Road, Brentwood

£1,500 pcm

TWO BEDROOM FLAT • SPACIOUS AND MODERN • HAS ELEVATOR • SECURE PARKING SPACE • CLOSE TO STATION • MINUTES TO TOWN CENTRE • COUNCIL TAX BAND - D • EPC RATING - C • TENANCY DEPOSIT - £1730.00 • INITIAL TENANCY TERM - 12 MONTHS



Accord is delighted to offer for rent this spacious, TWO BEDROOM FLAT within walking distance of Brentwood town centre and near to Brentwood Station. This first floor flat is modern throughout, it offers an open plan lounge/kitchen with integrated appliances. The master bedroom with fitted wardrobes and en-suite shower room. The second bedroom is a good size with fitted wardrobes. The main bathroom has shower over the bath. Other benefits include an elevator, a reserved parking space within a gated car park and Juliette balconies to both lounge and master bedroom.

Council Tax band: D

EPC Rating - c

Initial Tenancy Term - 12 Months

Tenancy Deposit - £1730.00