



# Coromandel, Abingdon

Abingdon

**Simpsons**

The Proactive Agent

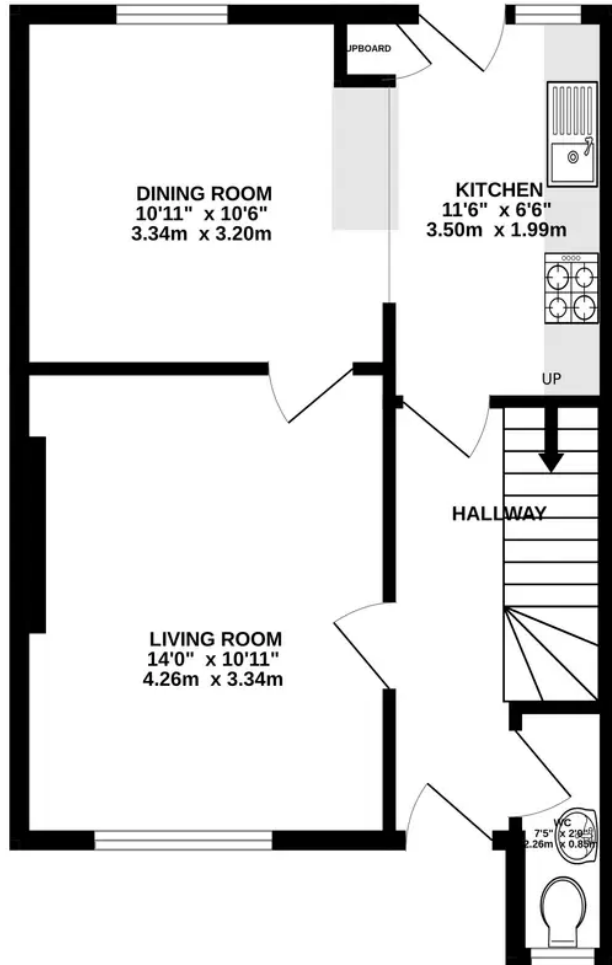
£260,000



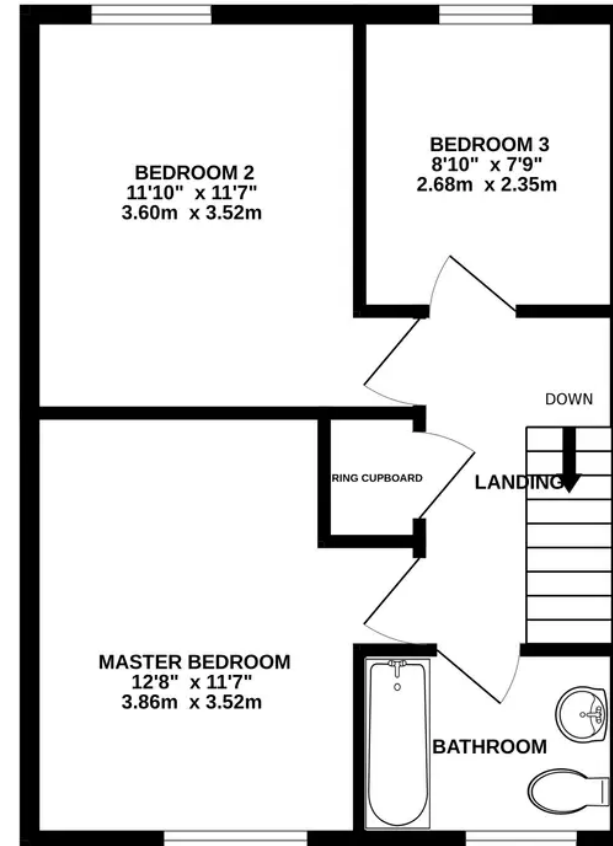
SCAN THE  
QR CODE  
FOR DETAILS



GROUND FLOOR  
435 sq.ft. (40.4 sq.m.) approx.



1ST FLOOR  
428 sq.ft. (39.8 sq.m.) approx.



TOTAL FLOOR AREA : 863 sq.ft. (80.2 sq.m.) approx.

Whilst every attempt has been made to ensure the accuracy of the floorplan contained here, measurements of doors, windows, rooms and any other items are approximate and no responsibility is taken for any error, omission or mis-statement. This plan is for illustrative purposes only and should be used as such by any prospective purchaser. The services, systems and appliances shown have not been tested and no guarantee as to their operability or efficiency can be given.  
Made with Metropix ©2023

# Coromandel

Abingdon, Abingdon

SIMPSONS REFURBISHMENT DIVISION - For sale with no onward chain, a three bedroom family home located just off Preston Road, South Abingdon.

Council Tax band: C

Tenure: Freehold

- A three bedroom home in need of cosmetic updating/improving, offered for sale with no onward chain.
- Open plan kitchen/diner.
- Larger than average rear garden, lending itself to extending the ground floor accommodation.
- Well proportioned bedrooms - two double, one single.
- No onward chain.



SCAN THE  
QR CODE  
**TO BOOK**  
YOUR VIEWING



