



26 Wentworth Crescent, Harrogate

Harrogate

Guide Price £270,000



MYRINGS

Harrogate's Family Estate Agent



26 Wentworth Crescent

Harrogate, Harrogate

CONVENIENT LOCATION - DRIVEWAY PARKING FOR 2 VEHICLES - SOUTH FACING GARDEN - GARDEN BAR / OFFICE - OPEN PLAN LIVING SPACE - LOG BURNER

Council Tax band: B

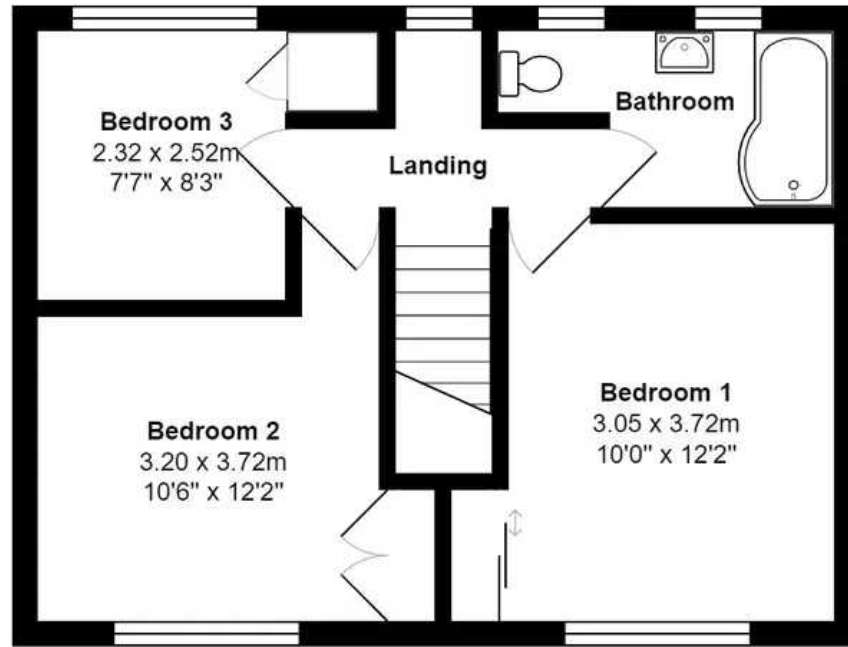
Tenure: Freehold

- CONVENIENT LOCATION
- DRIVEWAY PARKING FOR 2
- SOUTH FACING GARDEN
- GARDEN BAR / OFFICE
- OPEN PLAN LIVING SPACE
- LOG BURNER

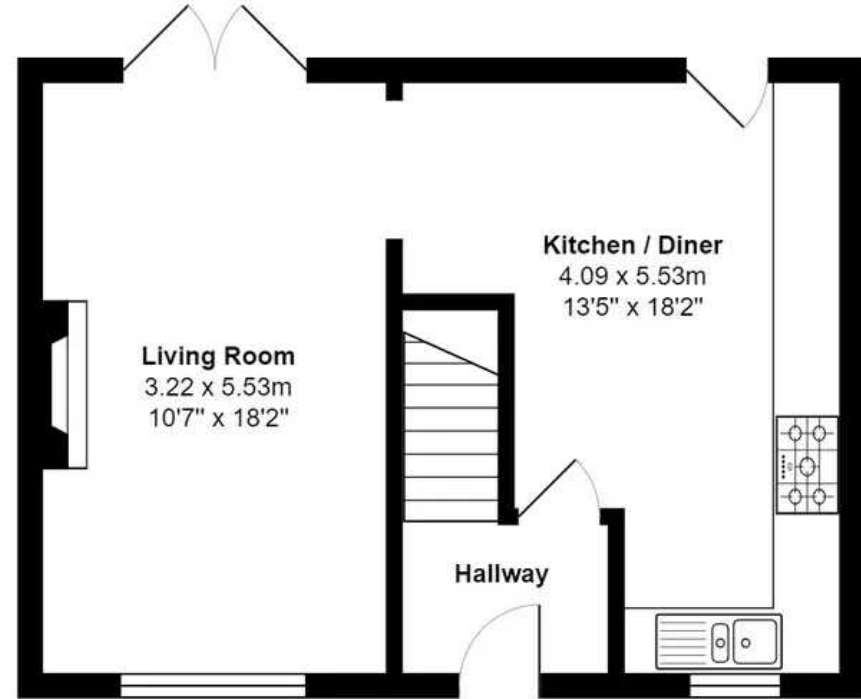


MYRINGS





Ground Floor
Area: 41.3 m² ... 445 ft²



First Floor
Area: 41.3 m² ... 445 ft²

Total Area: 82.6 m² ... 889 ft²

All measurements are approximate and for display purposes only.





Myrings Estate Agents

Myrings Estate Agents Ltd, 10 Princes Square - HG1 1LX

01423
566400

• enquiries@myringsestateagents.com • <http://myringsestateagents.com/>

Proud to support

Martin House
Children's Hospice

Here when families need us most

Registered Charity No. 517919