

# Pryme Street, Anlaby

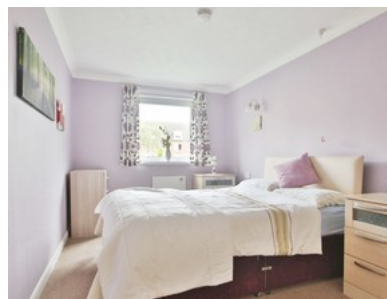
## OFFERS IN THE REGION OF £58,500



**beercocks**  
valuing people, not just houses



- ✔ Smart One Bedroom Ground Floor Apartment
- ✔ Views Over Beautiful Mature Communal Gardens
- ✔ Intercom Access
- ✔ Yards From All The Communal Amenities
- ✔ Early Viewing Highly Recommended
- ✔ Leasehold
- ✔ Council Tax Band B
- ✔ Epc Rating C



Bedroom  1 Bathroom  1 Reception  1

OIRO

**£58,500**