



54 Laing Gardens, Broxburn

Offers Over £225,000



54 Laing Gardens

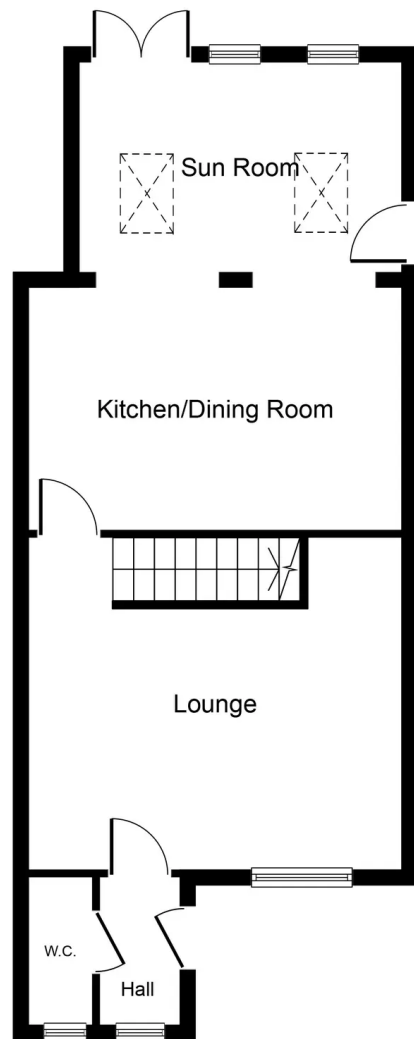
Broxburn, Broxburn

Stunning 3-bed semi-detached house in sought-after area brought to the market in truly walk in condition. The property boasts, modern high gloss kitchen with dining area adjacent, garden room extension, 3 double bedrooms, contemporary shower room & lower level WC. Enclosed rear garden with slate areas, shed with built-in BBQ. Driveway parking.

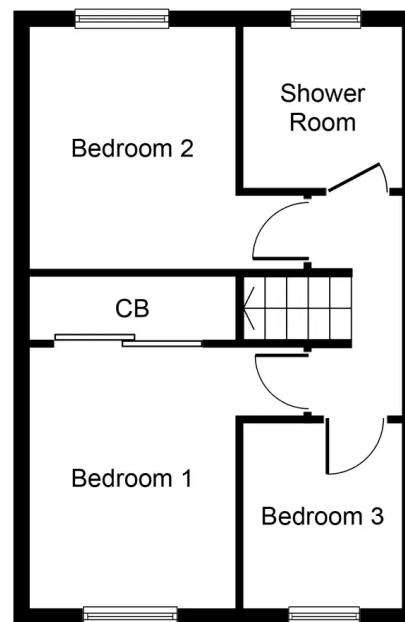
Tenure: Freehold

- Exceptionally Well Presented Three Bedroom semi-detached
- Garden Room Extension to Rear offering versatility of use
- Fabulous Modern High Gloss Fitted Kitchen with Integrated appliances and Dining Area
- Well proportioned Lounge with south-facing views to Pentlands
- A truly stunning property found in Walk in condition throughout
- Three Double Bedrooms all with ample space for free standing furniture
- Contemporary modern Shower Room
- Stylish lower level WC
- Private sociable rear garden with large garden shed housing built-in barbeque
- Driveway Parking





Ground Floor
Approximate Floor Area
541 sq. ft.
(50.3 sq. m.)



First Floor
Approximate Floor Area
375 sq.ft.
(34.8 sq.m.)

Whilst every attempt has been made to ensure the accuracy of the floor plan contained here, measurements of doors, windows, rooms and any other items are approximate and no responsibility is taken for any error, omission, or mis-statement. The measurements should not be relied upon for valuation, transaction and/or funding purposes. This plan is for illustrative purposes only and should be used as such by any prospective purchaser or tenant. The services, systems and appliances shown have not been tested and no guarantee as to their operability or efficiency can be given.



KnightBain Estate Agents

Knightbain, 4 Greendykes Road, Broxburn - EH52 5AG

01506 852000

info@knightbain.co.uk

www.knightbain.co.uk/

