



42 Bentley Avenue, Yaxley
Peterborough



£399,995



42 Bentley Avenue, Yaxley, PE7 3ZT

Introducing this impressive detached property, situated in a sought-after location offering convenient access to public transport links, nearby schools, and local amenities. This spacious home is ideal for families.

Upon entering, you will immediately appreciate the good condition that this home has been maintained in with a re-fitted kitchen, utility room, bathroom and en-suite. The property boasts four generously sized bedrooms, with the master bedroom being a double and featuring an en-suite, as well as built-in wardrobe providing ample storage space.

The ground floor of the property showcases two reception rooms with a large kitchen/diner leading to utility room offering versatility for various lifestyle needs.

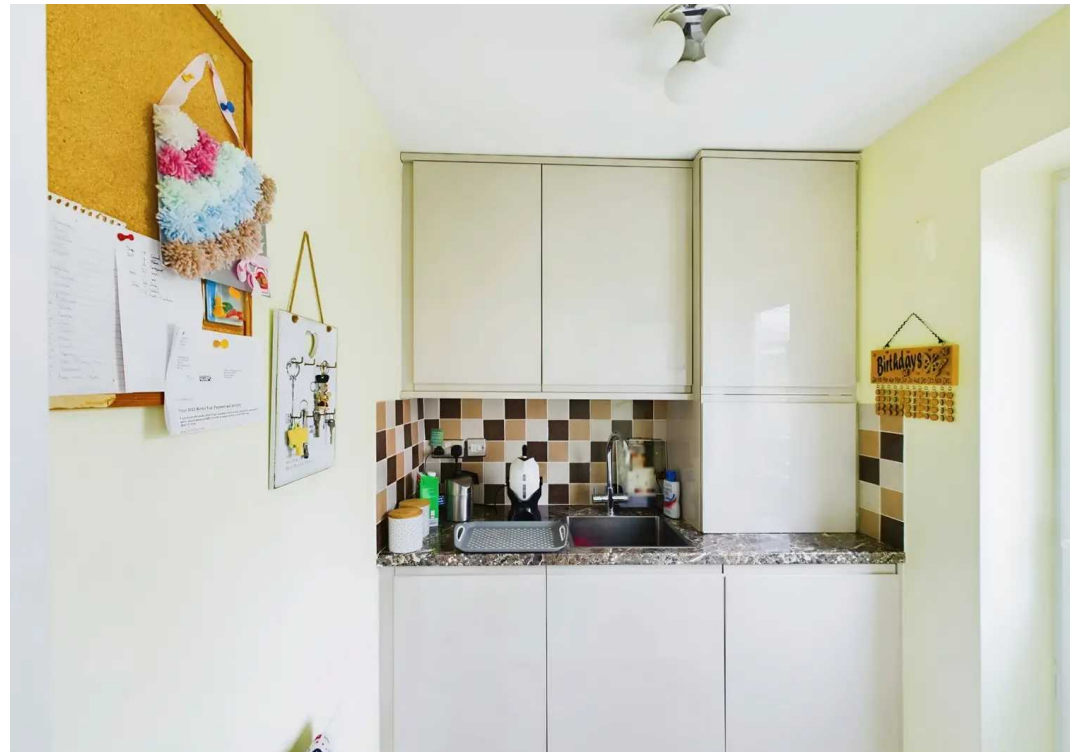
Externally, this property holds potential with a well-maintained garden, offering space for outdoor activities and entertaining guests. Additionally, there is off-road parking available for several vehicles leading to a double garage.

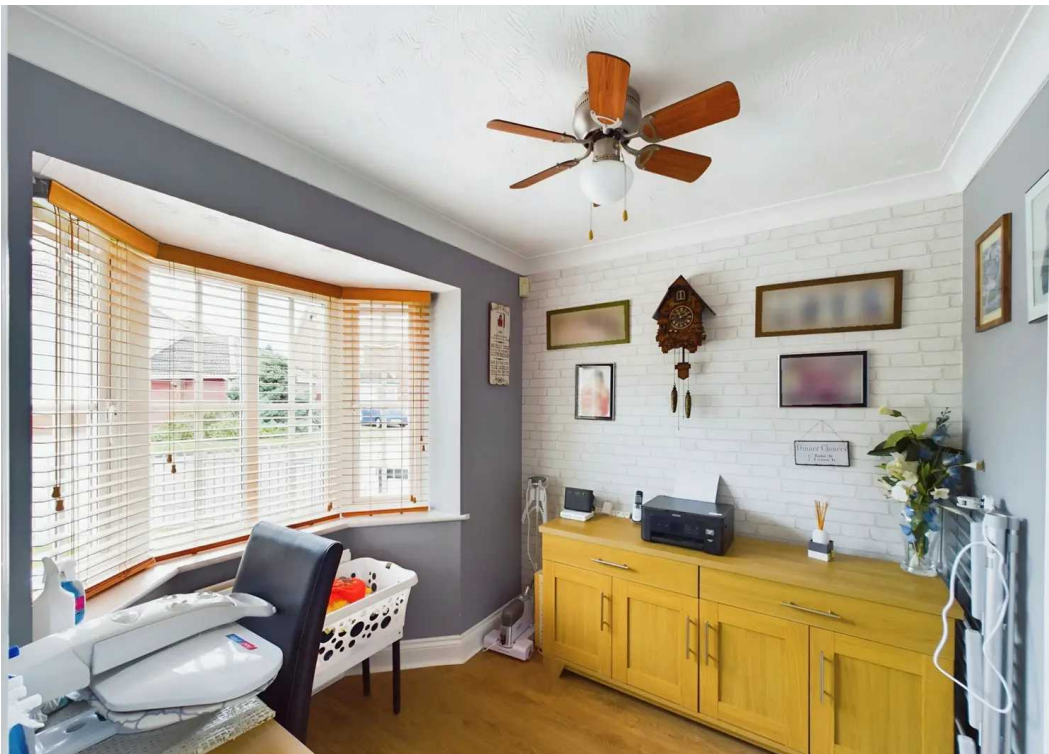
With a council tax band of D, this wonderful home offers great value for its desirable location and numerous attributes.

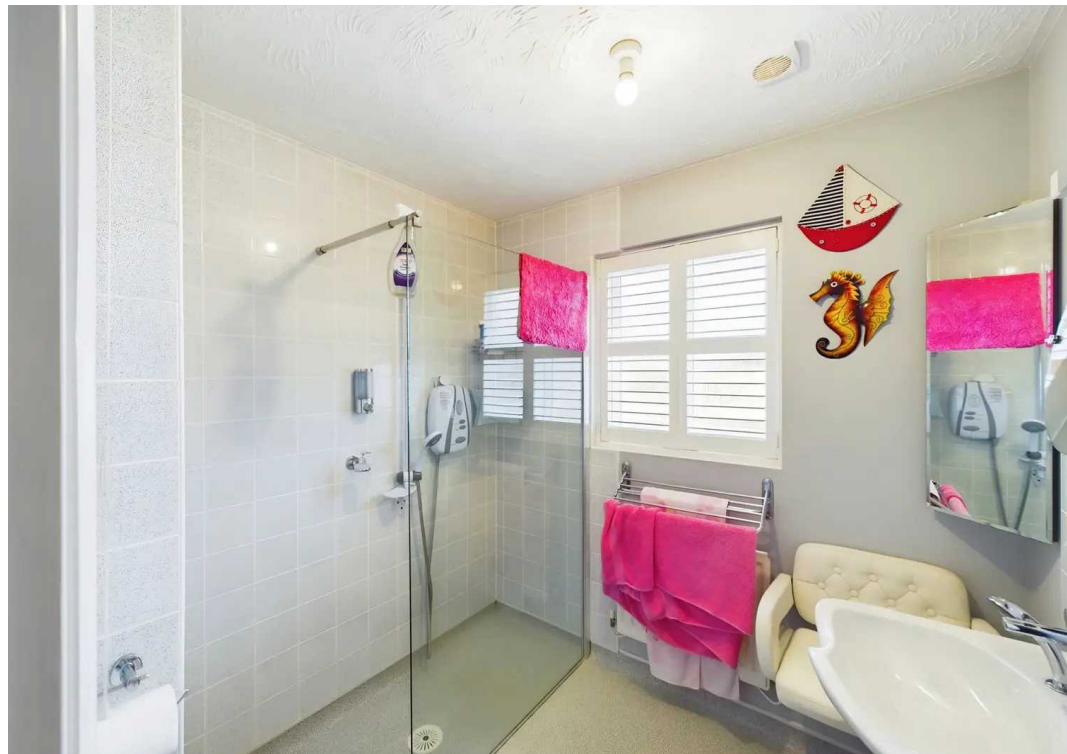
Council Tax band: D

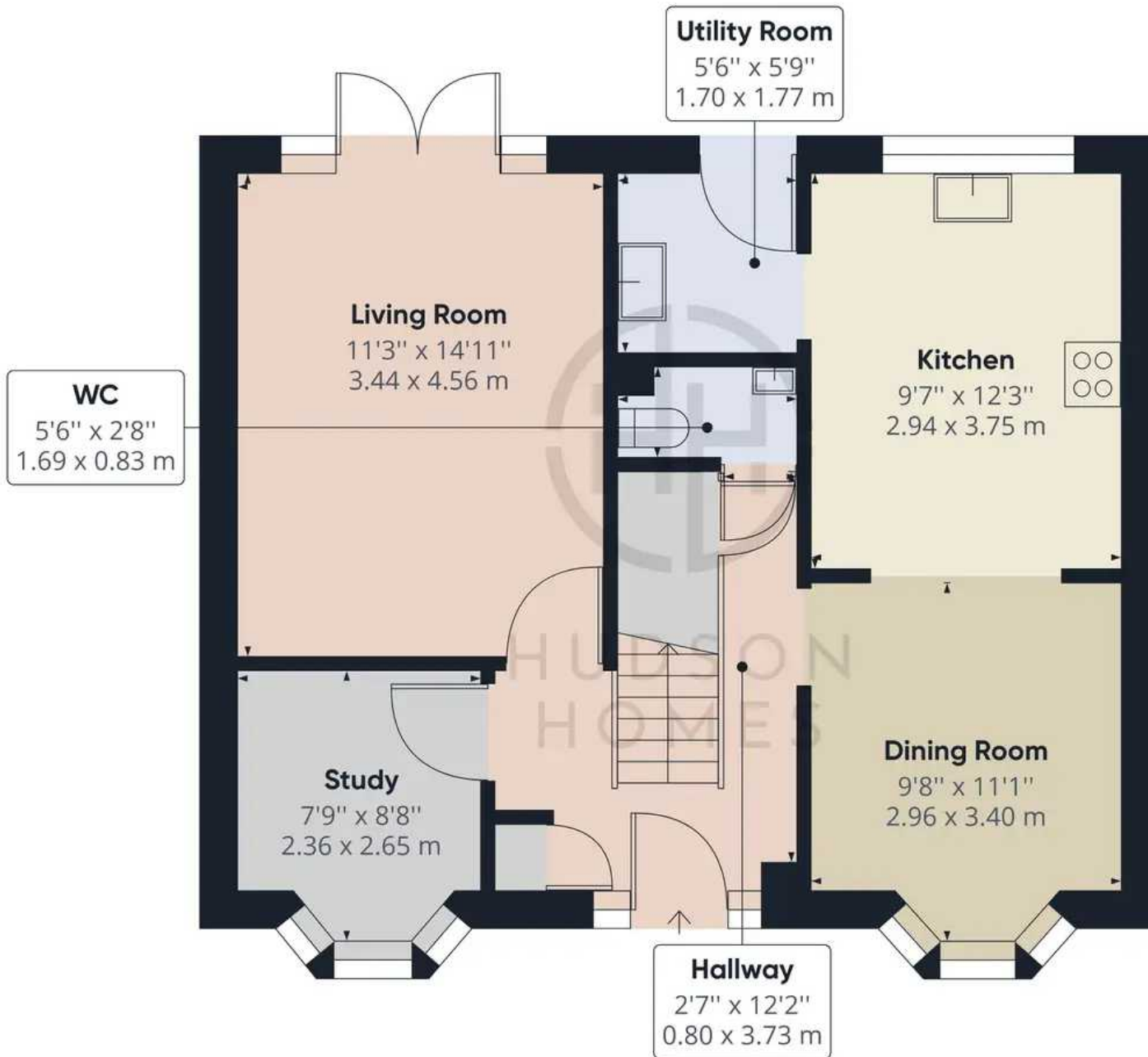
Tenure: Freehold

- Ideal Family Home
- Detached With Detached Double Garage









Floor 0

Approximate total area⁽¹⁾

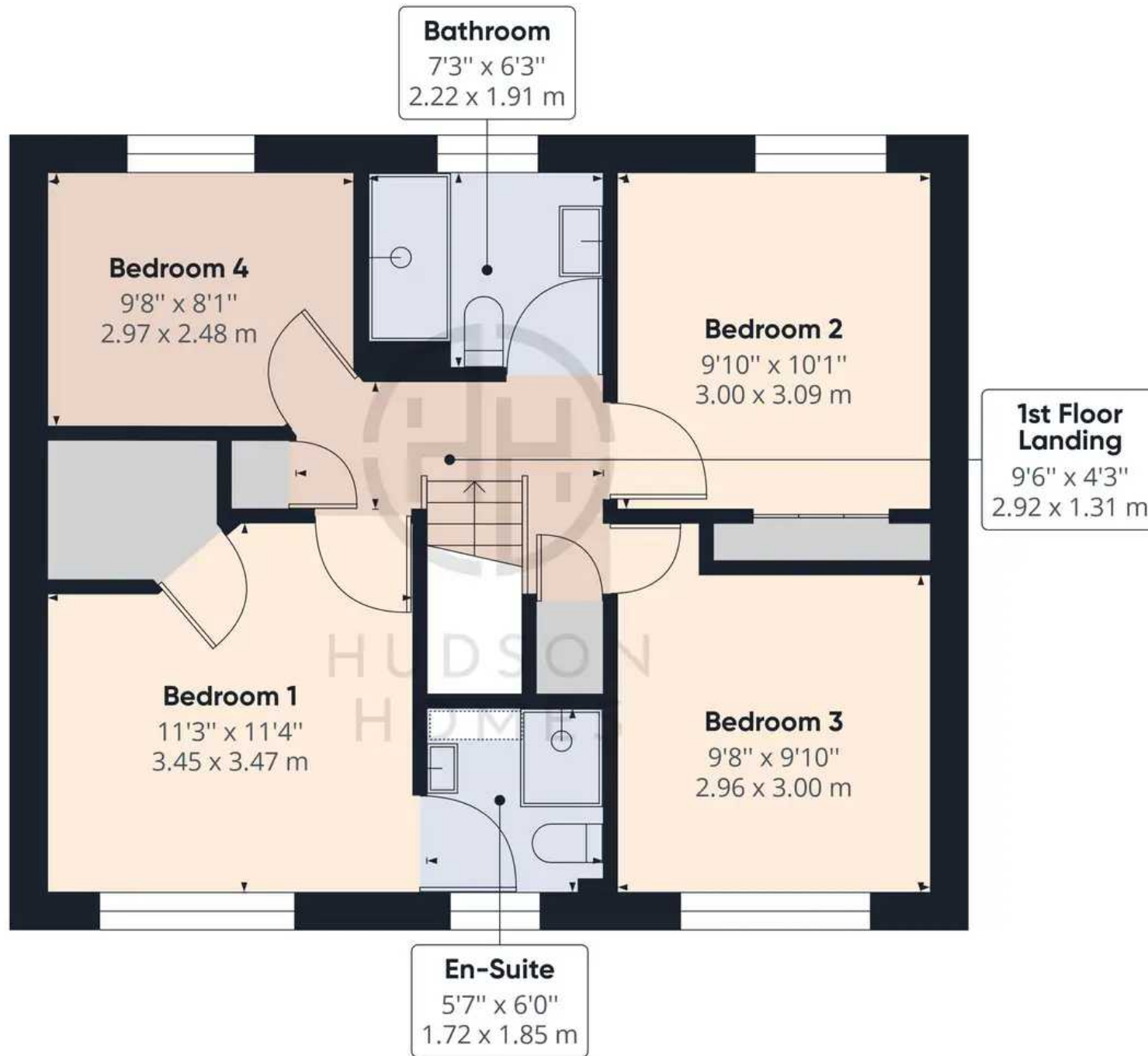
618.77 ft²

57.49 m²

(1) Excluding balconies and terraces

While every attempt has been made to ensure accuracy, all measurements are approximate, not to scale. This floor plan is for illustrative purposes only.

GIRAFFE 360



Approximate total area⁽¹⁾

571.81 ft²

53.12 m²

(1) Excluding balconies and terraces

While every attempt has been made to ensure accuracy, all measurements are approximate, not to scale. This floor plan is for illustrative purposes only.

GIRAFFE 360



Hudson Homes Estate Agents

122a Main Street, Yaxley - PE7 3LP

01733 788222

info@hudson-homes.co.uk

www.hudson-homes.co.uk/

