



**41 Borthwick Park, Orton Wistow**  
Peterborough



In Excess of **£400,000**



## 41 Borthwick Park

Orton Wistow, Peterborough

Hudson Homes are delighted to have on offer for sale this well presented four bedroom detached property located in a popular location close to amenities, major roads, schools and Ferry Meadows Country Park.

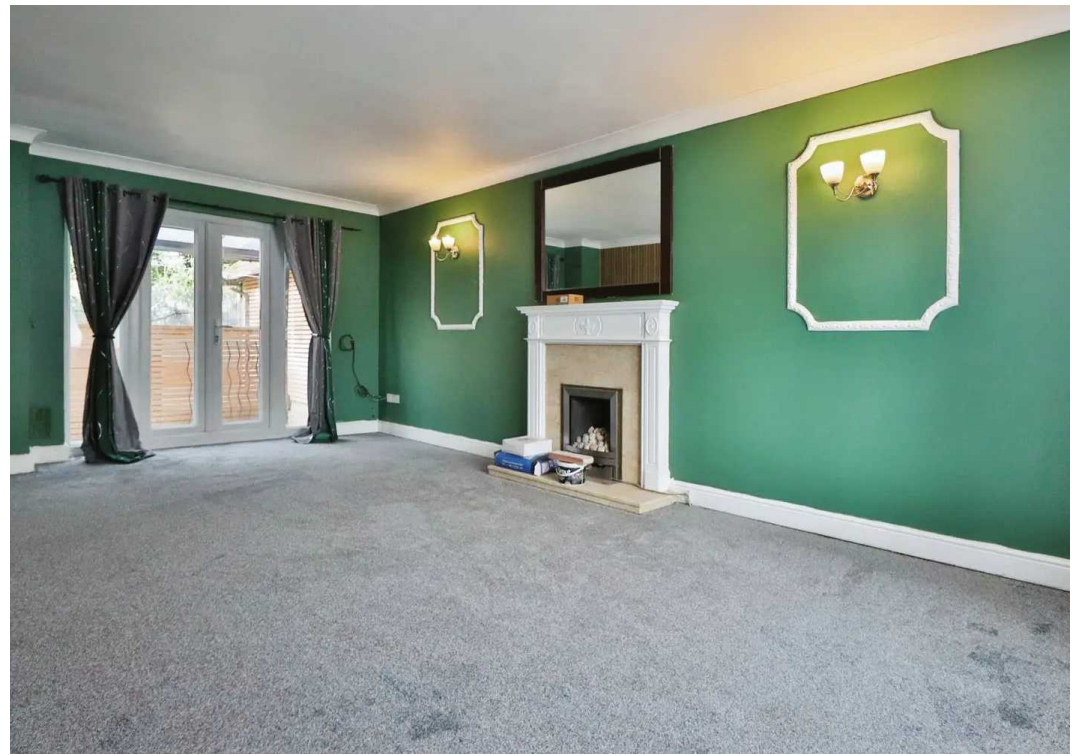
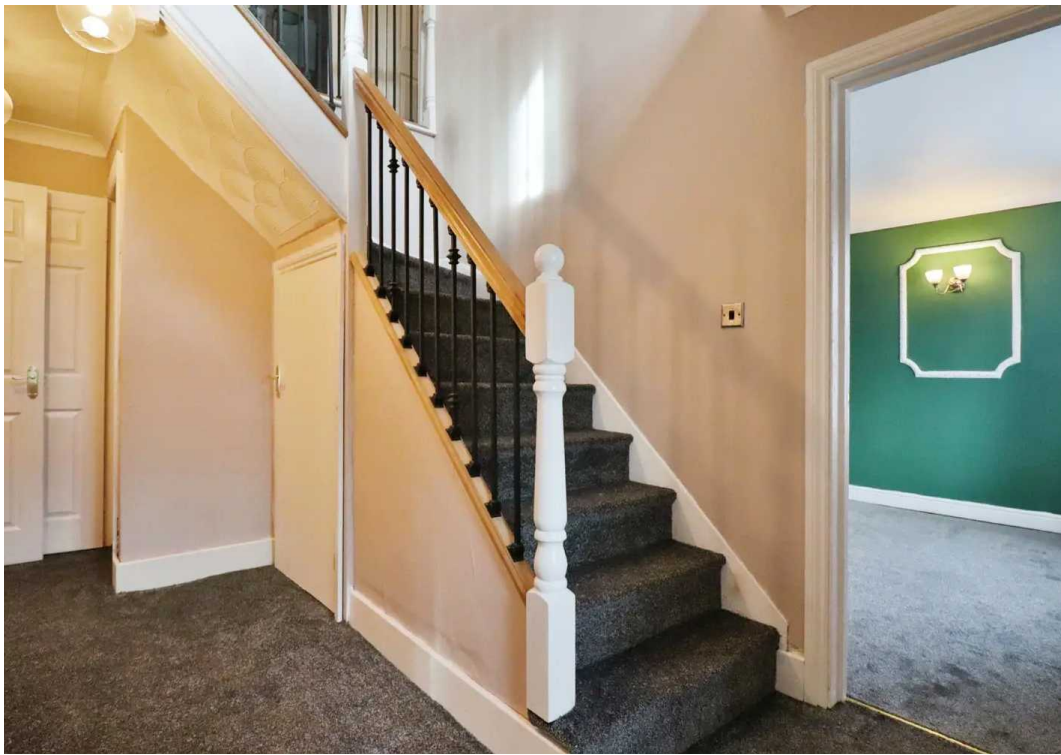
The property comprises entrance hallway, dining room, cloak room, living room and kitchen leading to utility room. To the first floor is four bedrooms with an en-suite to master with a family bathroom, to the outside of the property is ample parking leading to a double garage with a privately enclosed rear garden

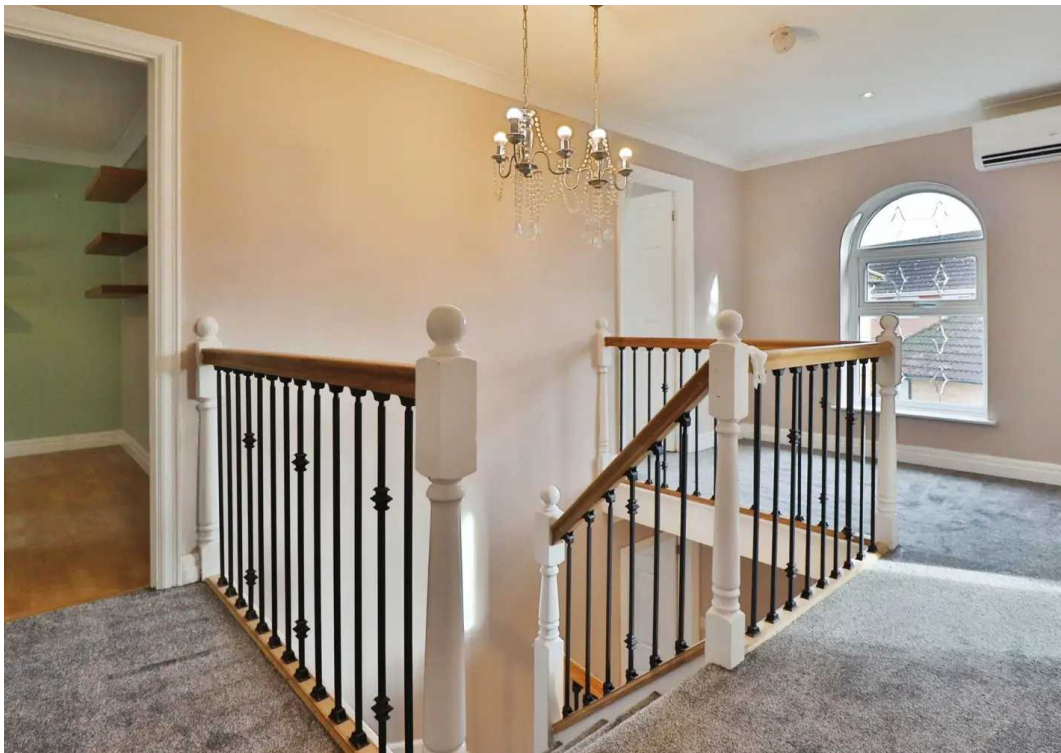
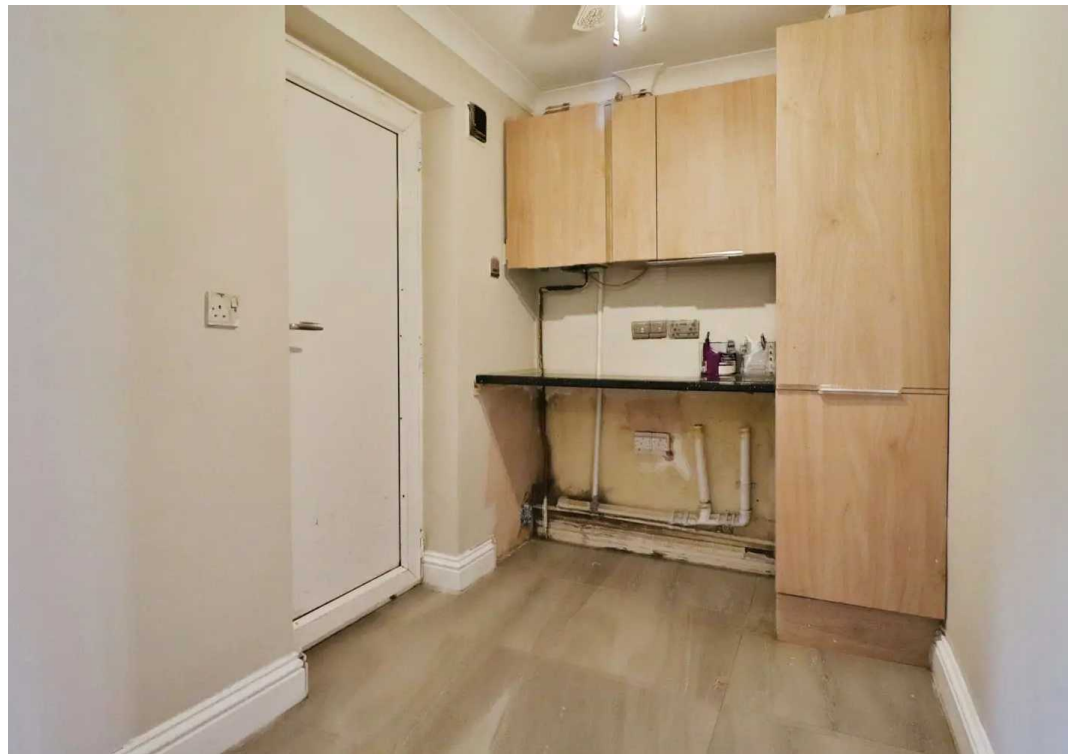
Call Lewis or Jade from our Sales Team for further details.

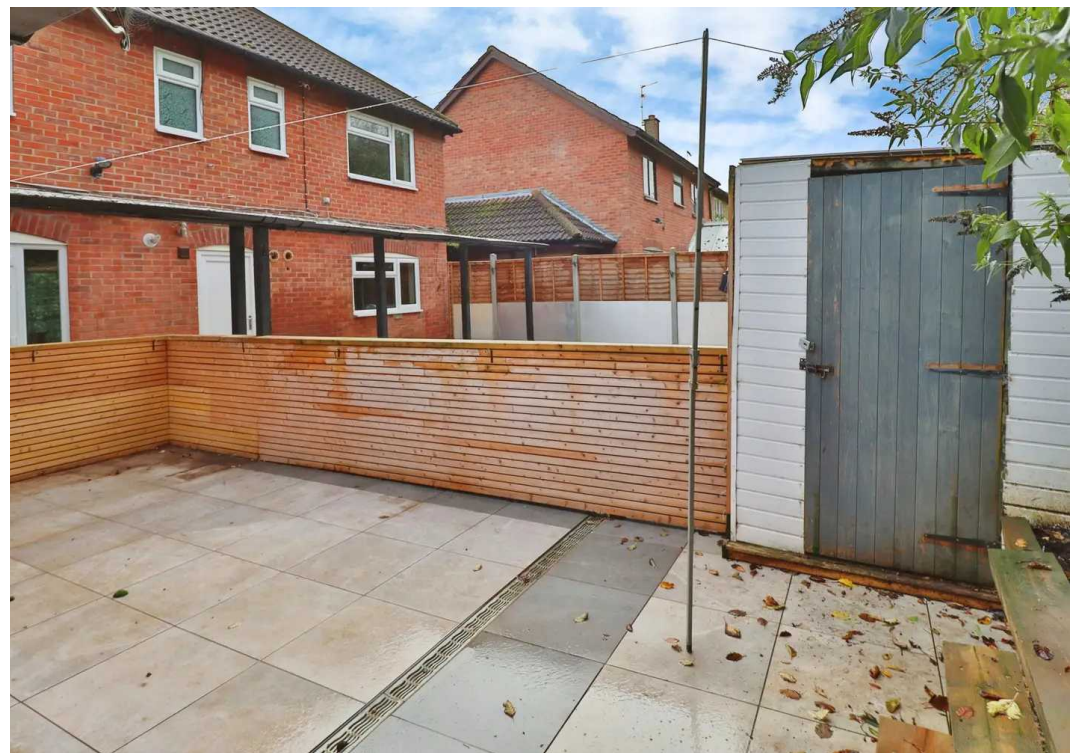
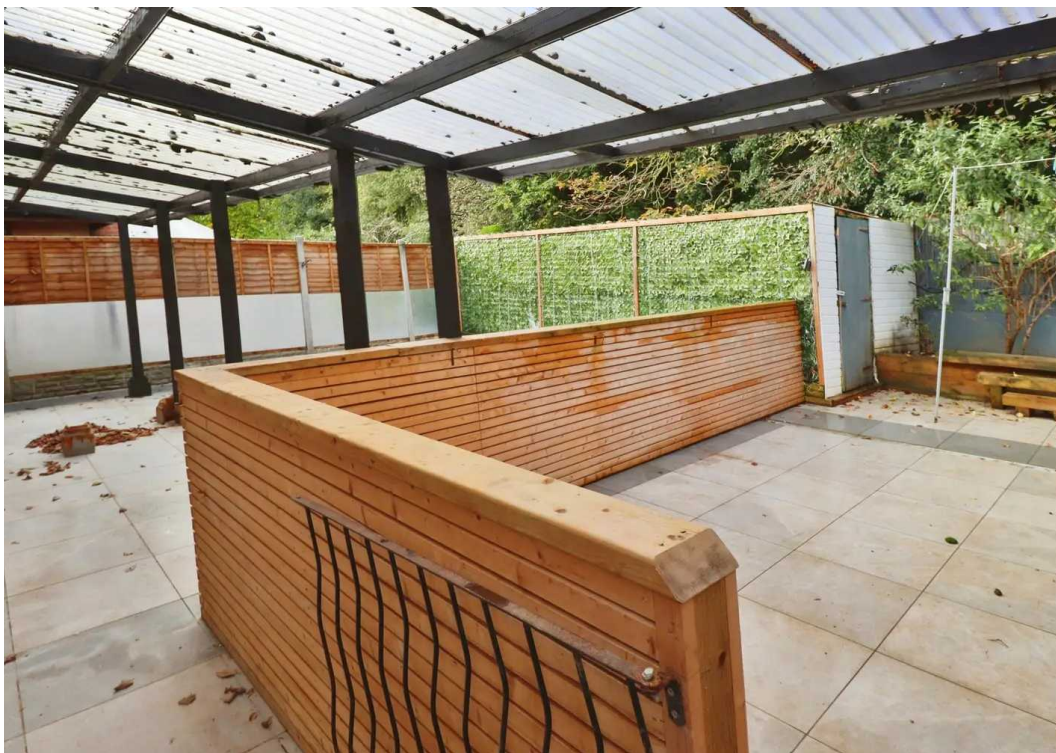
Council Tax band: E

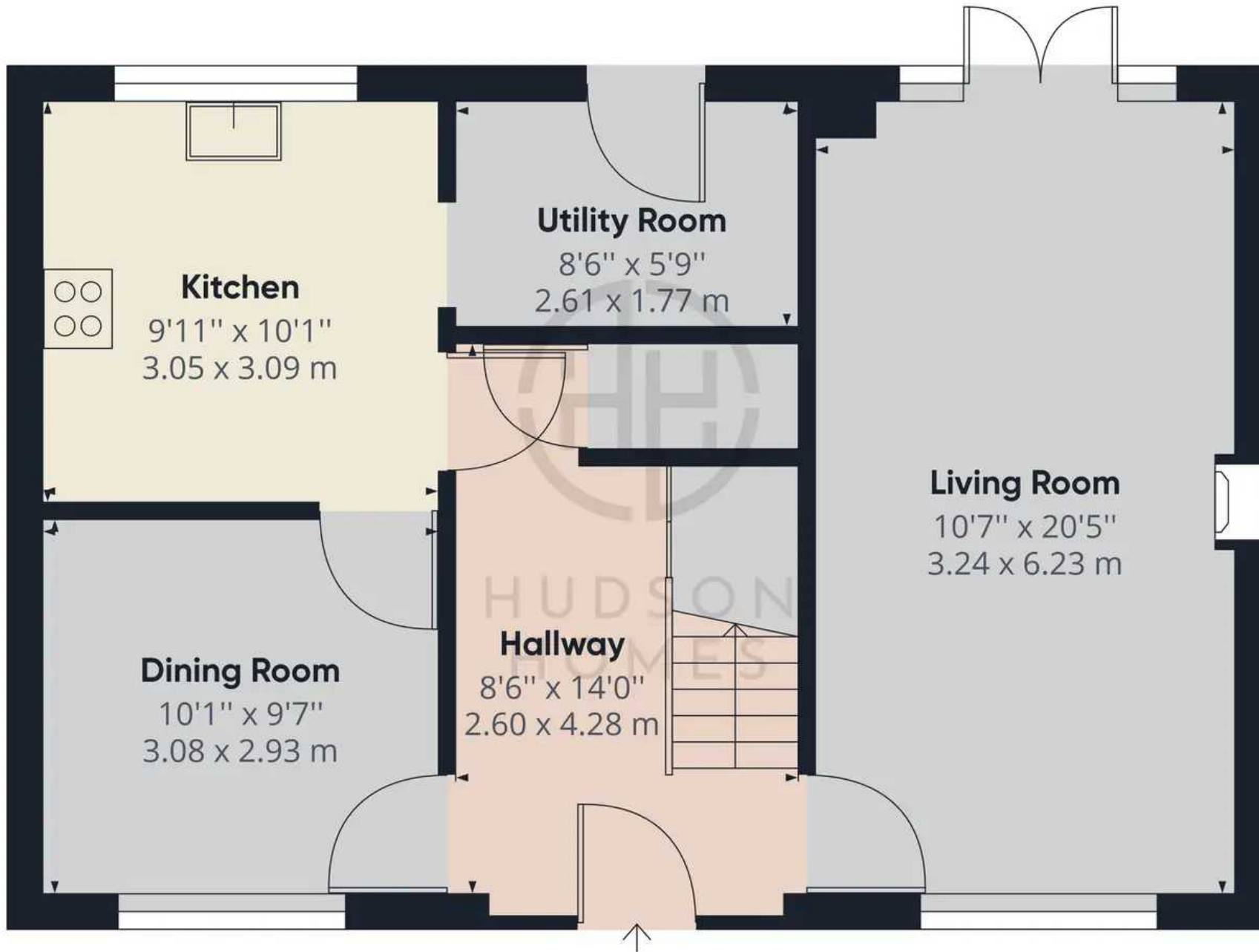
Tenure: Freehold

- Detached Family Home
- Four Bedrooms
- Two Reception Rooms
- Close To Local Amenities
- Double Garage
- No Forward Chain









Floor 0

Approximate total area<sup>(1)</sup>

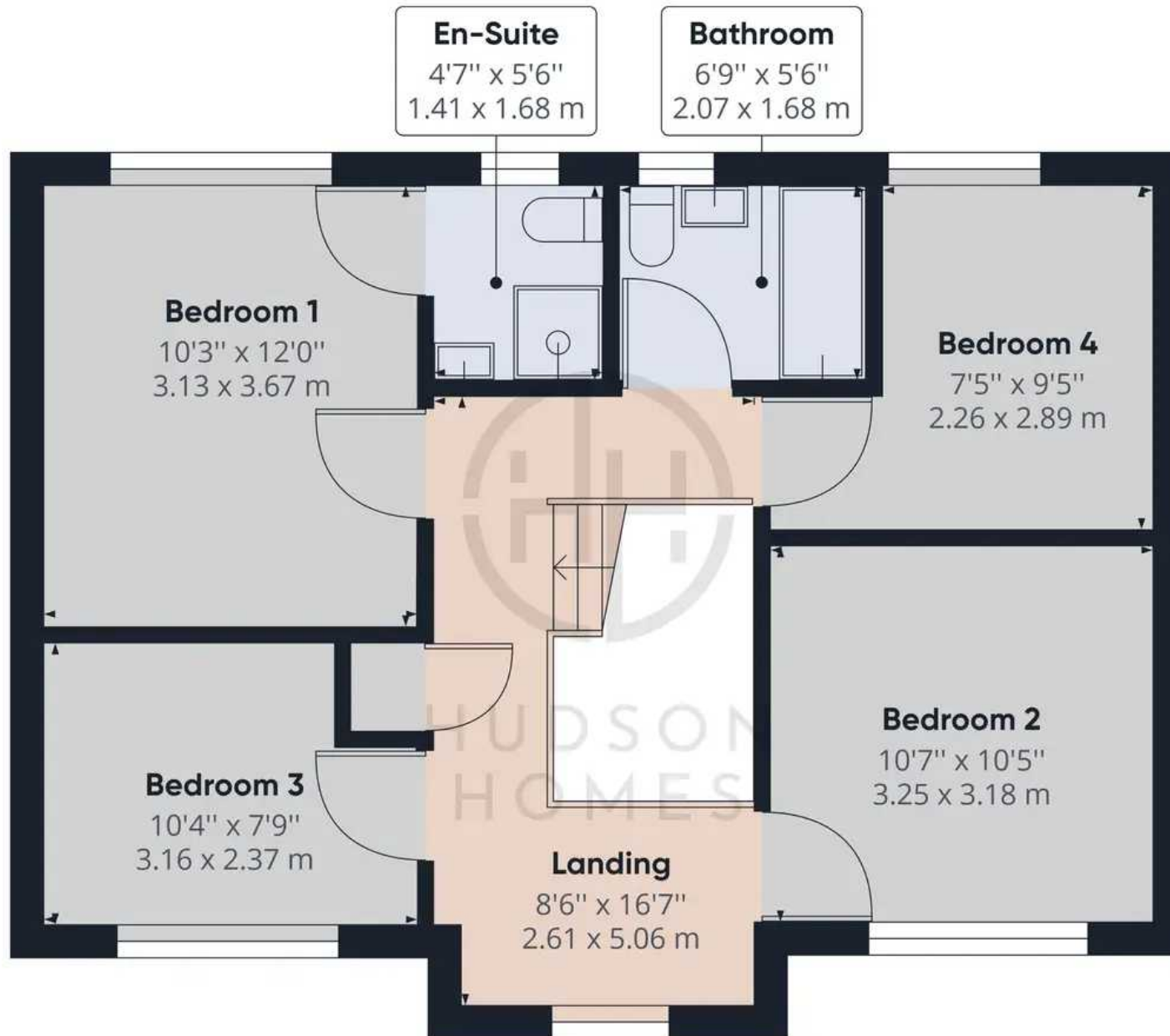
602.15 ft<sup>2</sup>

55.94 m<sup>2</sup>

(1) Excluding balconies and terraces

While every attempt has been made to ensure accuracy, all measurements are approximate, not to scale. This floor plan is for illustrative purposes only.

GIRAFFE 360



Approximate total area<sup>(1)</sup>

576.33 ft<sup>2</sup>

53.54 m<sup>2</sup>

(1) Excluding balconies and terraces

While every attempt has been made to ensure accuracy, all measurements are approximate, not to scale. This floor plan is for illustrative purposes only.

GIRAFFE 360



## Hudson Homes Estate Agents

122a Main Street, Yaxley - PE7 3LP

01733 788222

[info@hudson-homes.co.uk](mailto:info@hudson-homes.co.uk)

[www.hudson-homes.co.uk/](http://www.hudson-homes.co.uk/)

