



1 Woodview, Six Bells, NP13 2PR

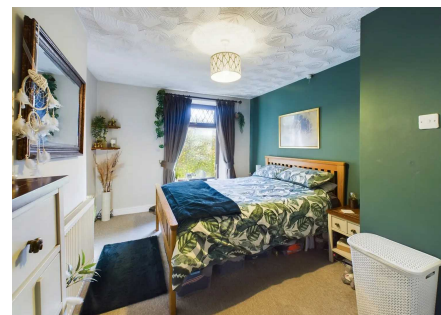
£345,000 Freehold

Semi-Detached Cottage • Lounge/Dining Room • Sitting Room • Kitchen • Utility/Cloakroom • Bathroom •
Four Bedrooms • Gardens • Garage • Driveway



1 Bethcar Street, Ebbw Vale, Gwent, NP23 6HH
Tel: 01495 302301 Email: ebbwvale@bidmeadcook.co.uk
www.bidmeadcook.co.uk

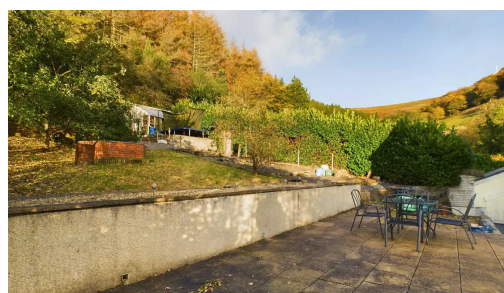
A semi-detached, stone-fronted cottage situated within a picturesque position of Six Bells having mountain views and overlooking fields. The property comprises an entrance porch, sitting room, open-plan lounge/dining room having a wood-burning stove, modern kitchen with breakfast bar and a utility/cloakroom. To the first floor are four bedrooms and bathroom. Benefits include UPVC double glazing, a gas central heating system, gated driveway, garage, front forecourt and generous rear garden having woodland behind.

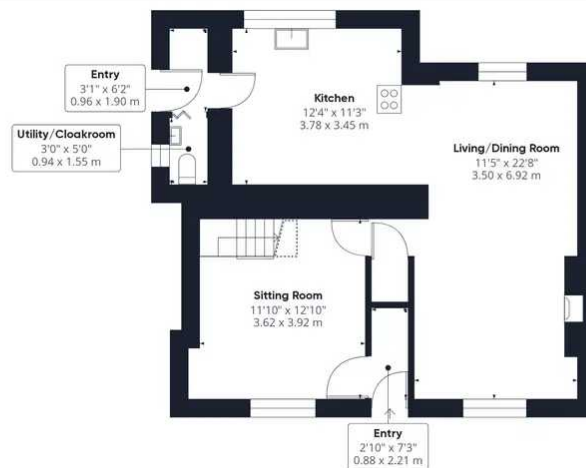


Council Tax band: C

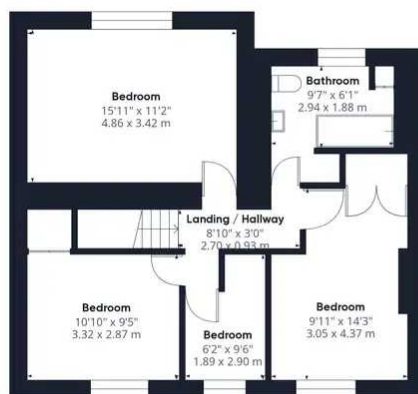
Tenure: Freehold

EPC Energy Efficiency Rating: D





Ground Floor



Floor 1

Approximate total area[†]

1257.69 ft²
116.84 m²

Reduced headroom

11.56 ft²
1.07 m²

Excluding balconies and terraces

Reduced headroom
(below 1.5m/4.92ft)

While every attempt has been made to ensure accuracy, all measurements are approximate, not to scale. This floor plan is for illustrative purposes only.

GIRAFFE 360



No statement in these details is to be relied upon as representation of fact, and purchasers should satisfy themselves by inspection or otherwise as to the accuracy of the statements contain within. These details do not constitute any part of any offer or contract. Bidmead Cook and their employees and agents do not have any authority to give warranty or representation whatsoever in respect of this property. These details and all statements herein are provided without any responsibility on the part of Bidmead Cook or the vendors. Equipment: Bidmead Cook has not tested the equipment or central heating system mentioned in these particulars and the purchaser are advised to satisfy themselves as to the working order and condition. Measurements: Great care is taken when measuring, but measurements should not be relied upon for ordering carpets, equipment etc. The Laws of copyright protect this material. Bidmead Cook is the owner of the copyright. This property sheet forms part of our database and is protected by the database right and copyright laws. No unauthorised copying or distribution without permission.

Bidmead Cook is a trading name of trading name of BC Acquisition Ltd. Registered in England No.14967217