



Charming Period Cottage

High Street, Cricklade, Wiltshire, SN6 6DA

Guide Price £290,000

mcfarlane
property.com

Mature Meandering Gardens Cricklade Wiltshire

- DELIGHTFUL TWO BEDROOM COTTAGE
- CRICKLADE HIGH STREET LOCATION
- CLOSE TO ALL AMENITIES

- DELIGHTFUL TWO BEDROOM COTTAGE -
PROMINENT CRICKLADE HIGH STREET
LOCATION - IDEAL FIRST PURCHASE OR
INVESTMENT - ATTRACTIVE ENCLOSED REAR
GARDENS - VIEWING RECOMMENDED -

A superb opportunity to acquire a charming two-bedroom cottage which oozes character and is in Cricklade High Street, within walking distance of all local amenities. The accommodation includes, entrance, lounge, fitted kitchen/dining room, delightful winding staircase leading to two double bedrooms and bathroom. Additionally there is gas central heating and double glazing. Outside there are attractive enclosed rear gardens. Viewing recommended to avoid later disappointment.



Cricklade

Is a former Saxon town wand known as the first Town on the Thames. The vibrant and well catered for range of amenities include dispensing chemist, family butchers, post office, optician, and dentist. There are also several bespoke traders, plus pubs and eateries.

Cricklade is also famous for the North Meadow and Water Meadow that boasts the snake headed fritillaries that bloom annually. This is now recognised as a NNR (National Nature Reserve) & SSSI (Site of Special Scientific Interest).

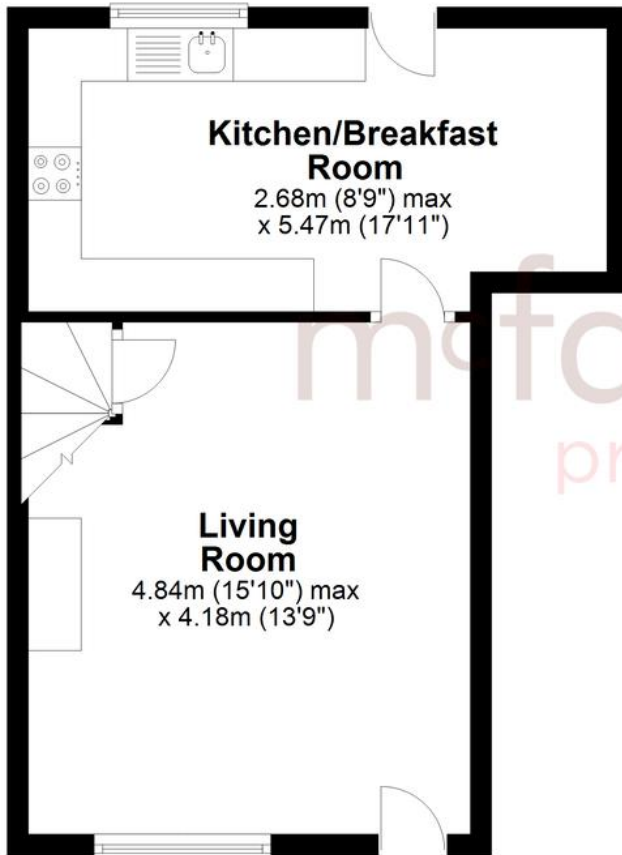


mcfarlane
property.com



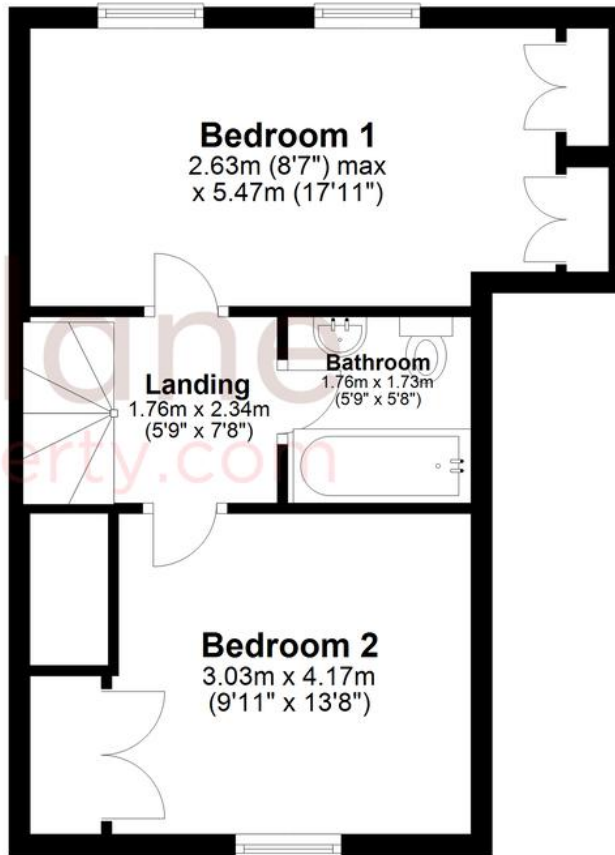
Ground Floor

Approx. 34.8 sq. metres (374.5 sq. feet)



First Floor

Approx. 34.7 sq. metres (373.9 sq. feet)



Total area: approx. 69.5 sq. metres (748.4 sq. feet)


We 
where you
LIVE

Our team are friendly, experienced and are all local. They know it better than they do their own living rooms and can help you find what you're looking for because **we love where we live.**

We would be delighted to show you around this property.

**Because every home
needs a personal touch.**

**If you would like to view this
property then please get in touch.**

 01793 751044

 cricklade@mcfarlaneproperty.com

mcfarlaneproperty.com

mcfarlane
property.com

Cricklade.

102 High Street
Cricklade SN6 6AA

 01793 751044

Marlborough.

106 High Street
Marlborough SN8 1LT

 01672 514380

Old Town.

28-30 Wood Street
Swindon SN1 4AB

 01793 296880

Swindon.

The Village Centre,
Redhouse SN25 2FW

 01793 296600

Agents Note: Whilst every care has been taken to prepare these sales particulars, they are for guidance purposes only. All measurements are approximate are for general guidance purposes only and whilst every care has been taken to ensure their accuracy, they should not be relied upon and potential buyers are advised to recheck the measurements