

Love Homes



6, Plough Lane, Houghton Conquest, Beds. MK45 3GR

This modern three bedroom property is a true gem, offering a deceptive amount of space and an abundance of natural light throughout. As you step inside you are greeted by a hallway that leads to a living room, perfect for relaxation. The convenience of a downstairs cloakroom adds to the practicality of this home. The heart of this house is the fitted kitchen/diner, featuring French doors out to the rear garden. With its well designed wall and base units, built in oven and hob and integrated appliances. Moving on to the first floor you'll find three bedrooms. The main bedroom benefits from its own shower room. Additionally there is a family bathroom for the rest of the family. Outside the property boasts a low maintenance enclosed rear garden with artificial turf and a patio seating area. Two dedicated parking spaces ensure convenience for residents and guests alike.



This property is presented by Mark Dumbrell - a Love Homes property expert with over 20 years' experience.

Find out more about this property by scanning the QR code.



1.6m



3



1



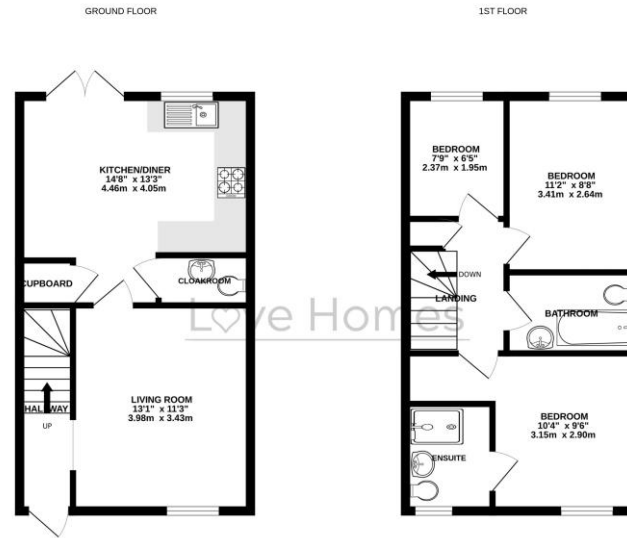
2

Tenure: Freehold Council Tax Band: D



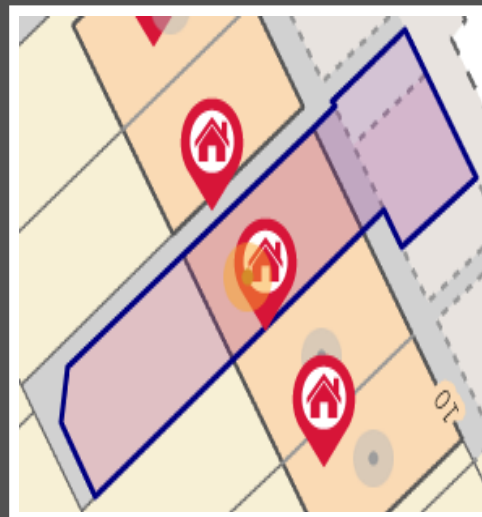
Houghton Conquest is a village and civil parish located in the Central Bedfordshire district of Bedfordshire. The parish also includes the hamlet of How End. Historically the name of the village originated from the Conquest family who held a manor and lands in the area from the 13th to the 18th century. The Houghton in Houghton Conquest is pronounced how-ton, and this has been the official pronunciation since at least 1998.





Drawn by Love Homes for illustrative purposes only. Measurements and areas shown are approximate. Made with MyPlan 10/22

Score	Energy rating	Current	Potential
92+	A	100 A	101 A
81-91	B		
69-80	C		
55-68	D		
39-54	E		
21-38	F		
1-20	G		



These particulars are set out as a general outline in accordance with the Property Misdescriptions Act (1991) only for the guidance of intending purchasers or lessees, and do not constitute any part of an offer or contract. Details are given without any responsibility, and any intending purchasers, lessees or third parties should not rely on them as statements or representations of fact but must satisfy themselves by inspection or otherwise as to the correctness of each of them. We have not carried out a structural survey and the services, appliances and specific fittings have not been tested. All photographs, measurements, floor plans and distances referred to are given as a guide only and should not be relied upon for the purchase of carpets or any other fixtures or fittings. Gardens, roof terraces, balconies, and communal gardens as well as tenure and lease details cannot have their accuracy guaranteed for intending purchasers. Lease details, service ground rent (where applicable) is given as a guide only and should be checked and confirmed by your solicitor prior to exchange of contracts. No person in the employment of Love Homes has any authority to make any representation or warranty whatever in relation to this property. Purchase prices, rents or other prices quoted are correct at the date of publication and, unless otherwise stated, are exclusive of VAT. We retain the copyright in all advertising material used to market this Property.

2a Sharpenhoe Road, Barton-le-Clay, MK45 4SD
 Tel: 01582 882440
 Email: bartonleclay@lovehomes.uk
 www.lovehomes.uk



Love Homes