



VOLTA HOUSE

HAMPSTEAD VILLAGE, NW3

AN EXQUISITE FOUR/FIVE BEDROOM, END OF TERRACE GEORGIAN GEM C1735
DISCREETLY POSITIONED BEHIND A GATED DRIVE AND DEEP FRONT GARDEN, SITUATED
ON ONE OF THE HIGHEST POINTS OF LONDON THE SUMMIT OF HAMPSTEAD VILLAGE.

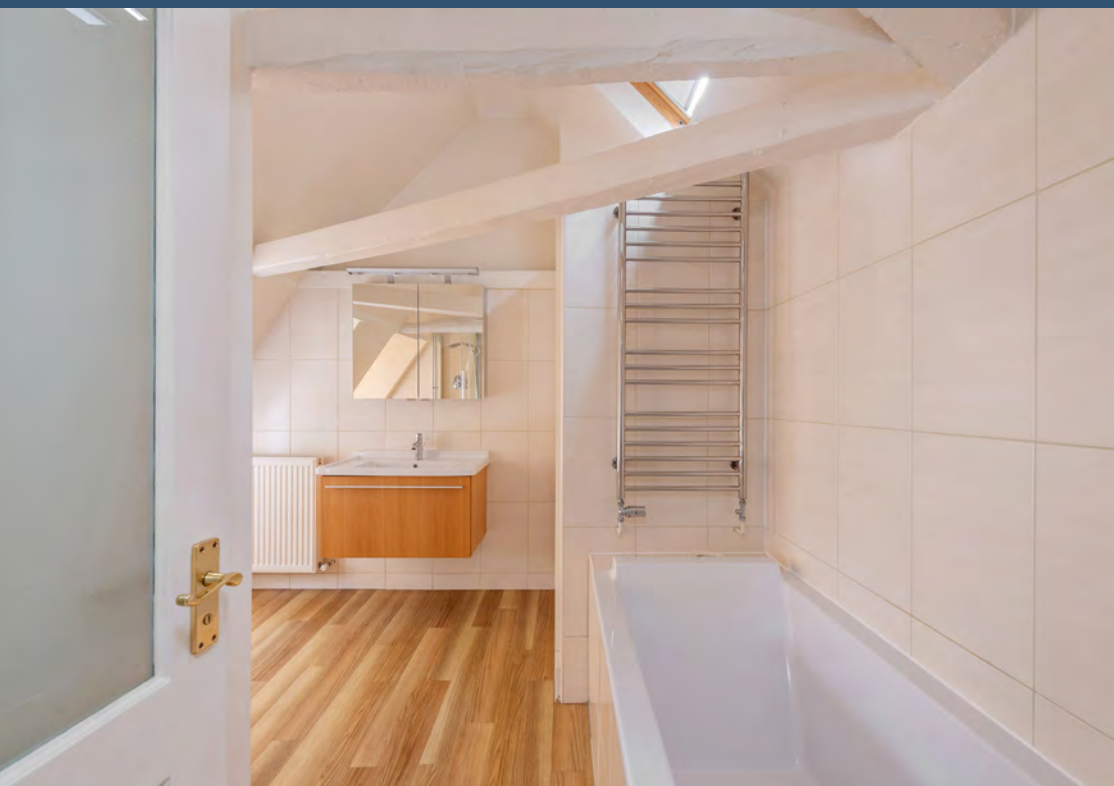












APPROXIMATE GROSS INTERNAL AREA
287.9 SQ_M (3,099 SQ_FT)

VAULT 28.9 SQ_M (311 SQ_FT)

TOTAL 316.8 SQ_M (3410 SQ_FT)



Ground Floor

First Floor

Second Floor

Third Floor

Lower Ground Floor



PRICE ON APPLICATION

FREEHOLD

SOLE SELLING AGENTS



RESIDENTIAL SALES & ACQUISITIONS

020 7431 0000

28 Church Row, Hampstead, London NW3 6UP
email: info@marcusparfitt.com www.marcusparfitt.com