

Love Homes



45 High Street, Silsoe, MK45 2PA

Full of character and charm, this 2 double bedroom cottage would be a delight to call home. From the minute you walk through the entrance door into the 16'7 living room with dining area you are welcomed by the charm of the beams and, if you are lucky, the warming coming from the fire in the Inglenook fireplace. As you wander through you will be surprised by the light and airy feel of the space with dual aspect windows adding to the feeling of space. The spacious living/dining room leads to a well proportioned refitted kitchen with integrated dishwasher, washing machine and fridge/freezer. With a door providing access to the generous size rear garden with patio, lawn and mature flower and shrub borders.



This property is presented by Stuart Scott - a Love Homes property expert with over 25 years' experience.

Find out more about this property by scanning the QR code.



3.7m



2



1



1

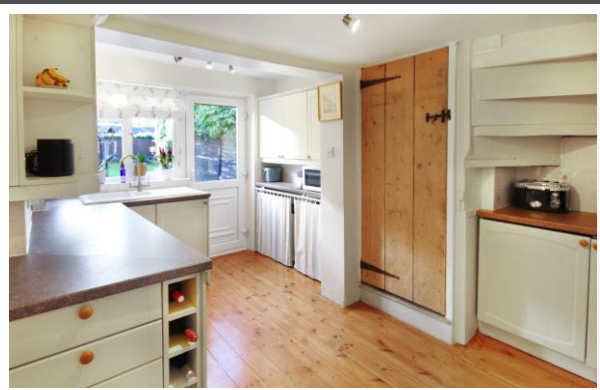
Tenure: Freehold Council Tax: B



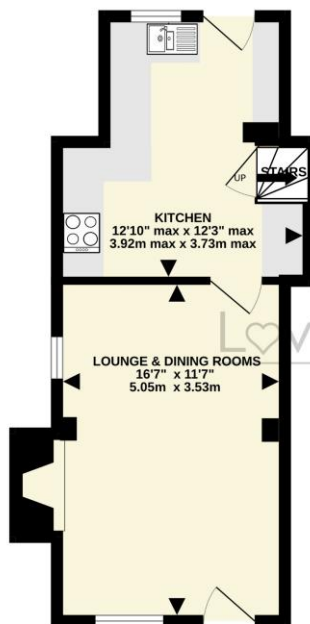


The Bedfordshire village of Silsoe is located on the A6 corridor between the major towns of Bedford and Luton. The area is synonymous for its well-regarded school catchments, pretty village pub and local store, which are within walking distance from the property. The English Heritage site of 'Wrest Park' is moments from the property and offers the opportunity to explore one of the area's most historic buildings and well publicised gardens.

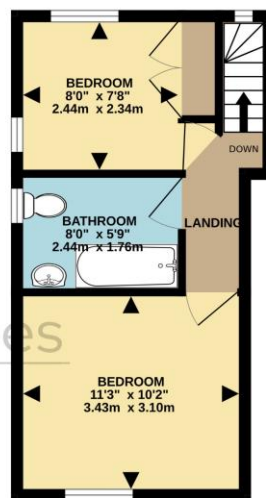
Commuter links into London St Pancras from Flitwick take approximately 40 minutes.



GROUND FLOOR
317 sq.ft. (29.4 sq.m.) approx.

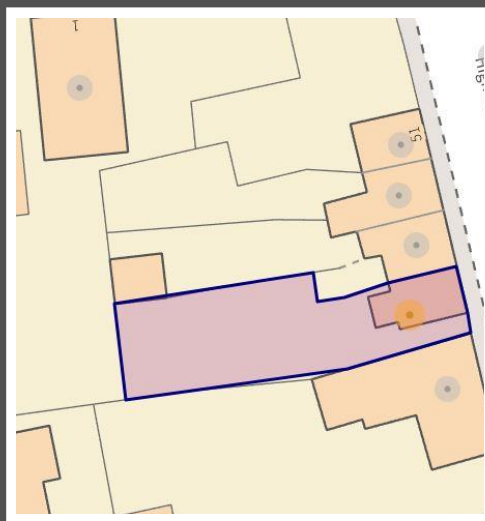


1ST FLOOR
267 sq.ft. (24.8 sq.m.) approx.



Love Homes

Score	Energy rating	Current	Potential
92+	A		
81-91	B		83 B
69-80	C		
55-68	D	59 D	
39-54	E		
21-38	F		
1-20	G		



These particulars are set out as a general outline in accordance with the Property Misdescriptions Act (1991) only for the guidance of intending purchasers or lessees, and do not constitute any part of an offer or contract. Details are given without any responsibility, and any intending purchasers, lessees or third parties should not rely on them as statements or representations of fact but must satisfy themselves by inspection or otherwise as to the correctness of each of them. We have not carried out a structural survey and the services, appliances and specific fittings have not been tested. All photographs, measurements, floor plans and distances referred to are given as a guide only and should not be relied upon for the purchase of carpets or any other fixtures or fittings. Gardens, roof terraces, balconies and communal gardens as well as tenure and lease details cannot have their accuracy guaranteed for intending purchasers. Lease details, service ground rent (where applicable) are given as a guide only and should be checked and confirmed by your solicitor prior to exchange of contracts. No person in the employment of Love Homes has any authority to make any representation or warranty whatever in relation to this property. Purchase prices, rents or other prices quoted are correct at the date of publication and, unless otherwise stated, are exclusive of VAT. We retain the copyright in all advertising material used to market this Property. All information is as advised by the seller and subject to change. Council tax bands can be subject to change by the local council.

5 The Russell Centre, Coniston Road, Flitwick, MK45 1QY
Tel: 01525 713111

Email: flitwick@lovehomes.uk

www.lovehomes.uk



Love Homes