



LAWRENCE RAND

Burgundy Court, 30 Arla Place

£404,650

Burgundy Court

, Ruislip

A stunning two double bedroom, two bathroom upper floor apartment which is exceptionally bright and spacious throughout. The property also benefits from a long lease, a large covered balcony, allocated parking and the benefit of secure video entry phone system.

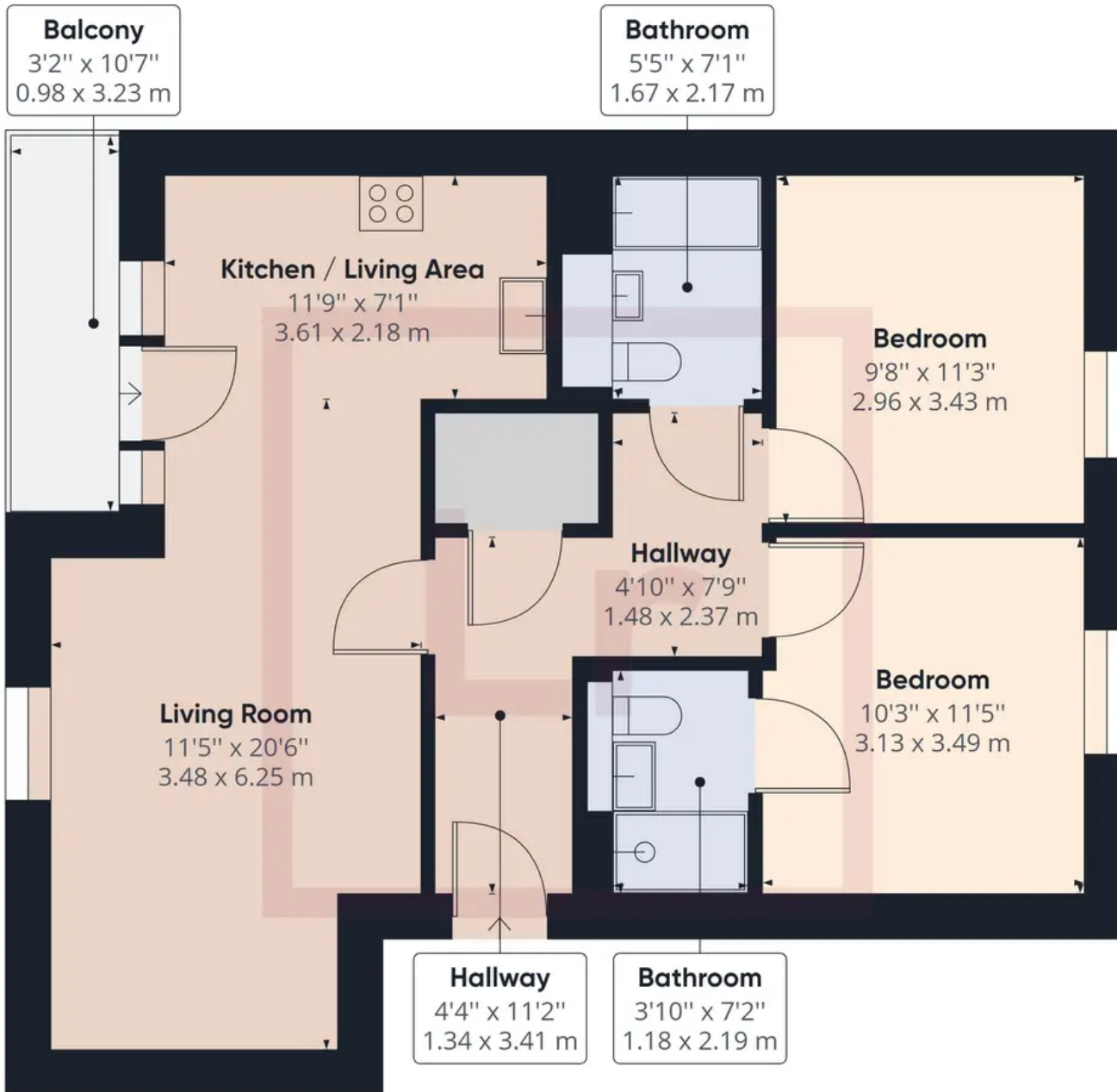
Council Tax band: D

Tenure: Leasehold

- Stunning upper floor apartment
- Two double bedrooms
- Open plan 'lifestyle' kitchen/reception room
- Two bathrooms - Master en-suite
- Modern development
- Great access to South Ruislip Station (Central line/Chiltern line)
- Local shops, supermarket, retail parks & highly regarded schools
- Secure video entry phone.







Approximate total area⁽¹⁾

712.83 ft²

66.22 m²

(1) Excluding balconies and terraces

While every attempt has been made to ensure accuracy, all measurements are approximate, not to scale. This floor plan is for illustrative purposes only.



Lawrence Rand

Lawrence Rand, 106 Victoria Road - HA4 0AL

01895 632211

Info@lawrence-rand.co.uk

www.lawrence-rand.co.uk/



LAWRENCE RAND