



16 Willow Court, The Parchments
£75,000 75% Shared Ownership



16 Willow Court

The Parchments, Newton-Le-Willows

Over 55 Retirement Apartment A well-presented 1st floor, 2-Bedroom apartment For Sale with 75% SHARED OWNERSHIP. Ideally located next to Newton-Le-Willows High Street. The property briefly comprises of an entrance hall, generous living room, a modern kitchen, a good sized double bedroom, an updated shower room, and a 2nd bedroom. Externally there is access to a shared garden backing onto the High Street, and Off-street parking.

Council Tax band: C

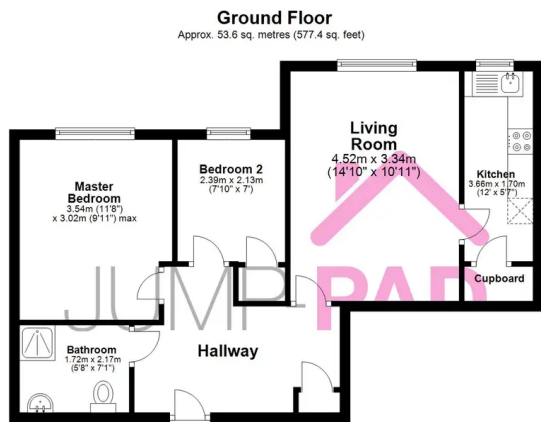
Tenure: Leasehold

- 75% Ownership, Plus monthly rental of £155 per month
- 2-Bedroom spacious apartment
- Ideally located next to Newton High Street
- Off-street Parking
- Over 55 shared ownership





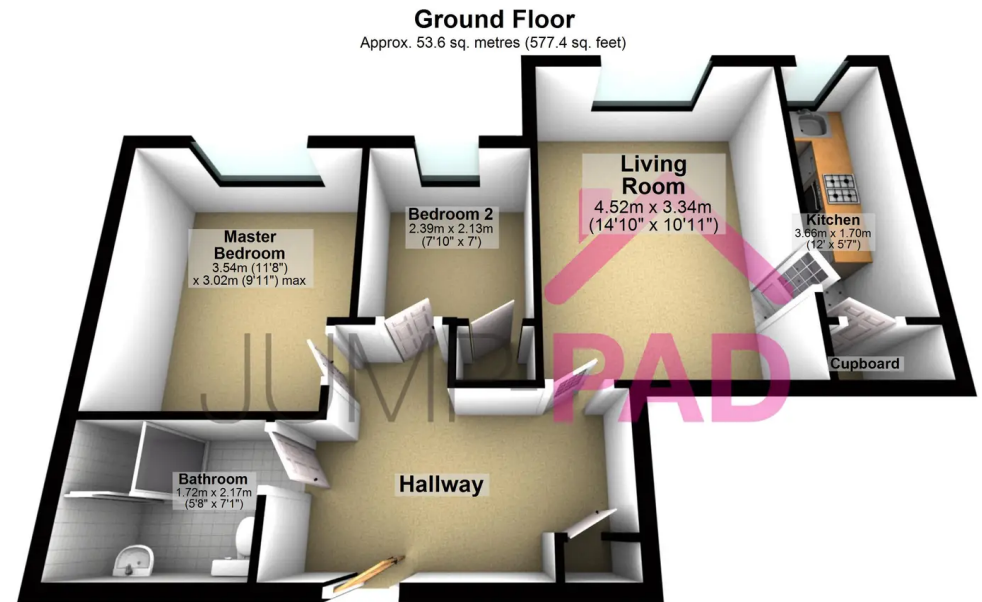




Total area: approx. 53.6 sq. metres (577.4 sq. feet)

Whilst we endeavour to ensure the accuracy of this floor plan, all measurements are approximate and no responsibility is taken for any error, omission or misstatement. This plan is for illustration purposes only and may not be representative of the property. Plan not to scale. Specifically no guarantee is given on the total square footage / meterage of the property if shown on this plan. Any figure given is for initial guidance only and should not be relied on as a basis of valuation.

Plan produced using PlanUp.



Total area: approx. 53.6 sq. metres (577.4 sq. feet)

Whilst we endeavour to ensure the accuracy of this floor plan, all measurements are approximate and no responsibility is taken for any error, omission or misstatement. This plan is for illustration purposes only and may not be representative of the property. Plan not to scale. Specifically no guarantee is given on the total square footage / meterage of the property if shown on this plan. Any figure given is for initial guidance only and should not be relied on as a basis of valuation.

Plan produced using PlanUp.