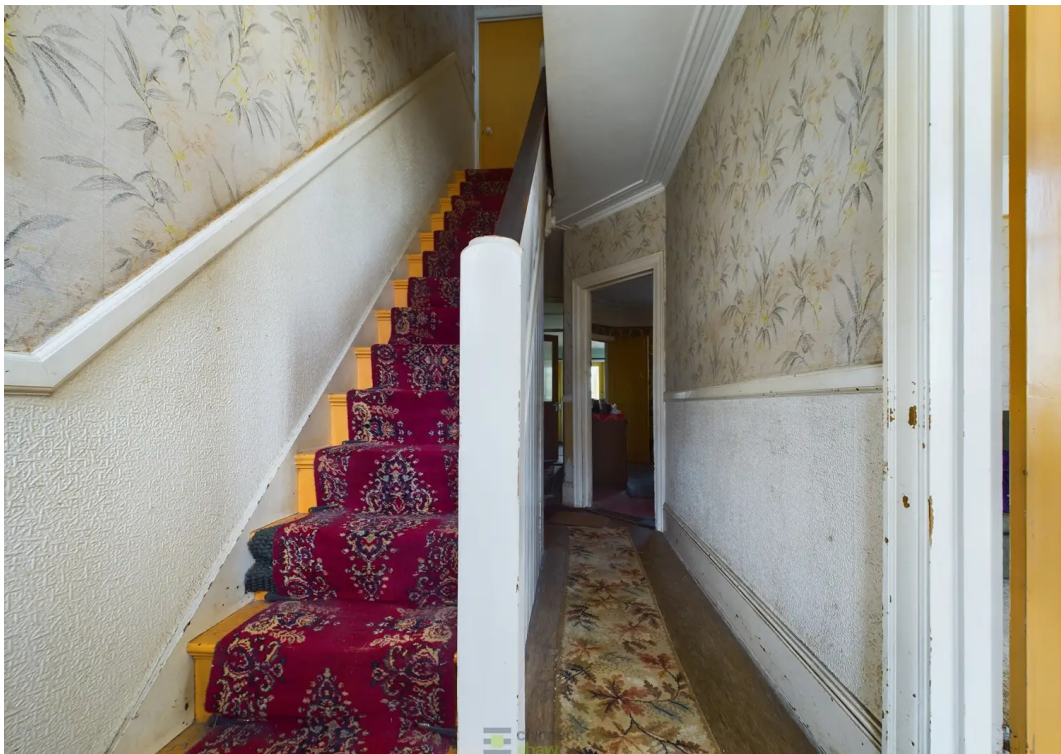




47 Crofton Road, Portsmouth
Portsmouth

Offers in Region of £210,000

 chinneckshaw



47 Crofton Road

North End, Portsmouth

Requiring complete refurbishment, this large three bedroom house can be found in Crofton Road, North End. It's a great location close to local shops and College Park, within walking distance to schools and with easy access to other parts of the City and the Eastern Road or M275.

The entrance hall is airy and has an under-stair cupboard and has access to the two reception rooms which in turn leads through to a small kitchen and then out into the rear garden.

Upstairs there are three bedrooms, all of which are a good size and a bathroom. All require upgrading but ready to make it your own!

The west facing garden has good size storage shed at the rear together with fence boundaries on either side.

Needing upgrading, this property gives you the chance to put your own mark on it and finished, we think this could be something quite special? Not forgetting this property also has the advantage of no forward chain.

All in all we think this would make a great project for someone!

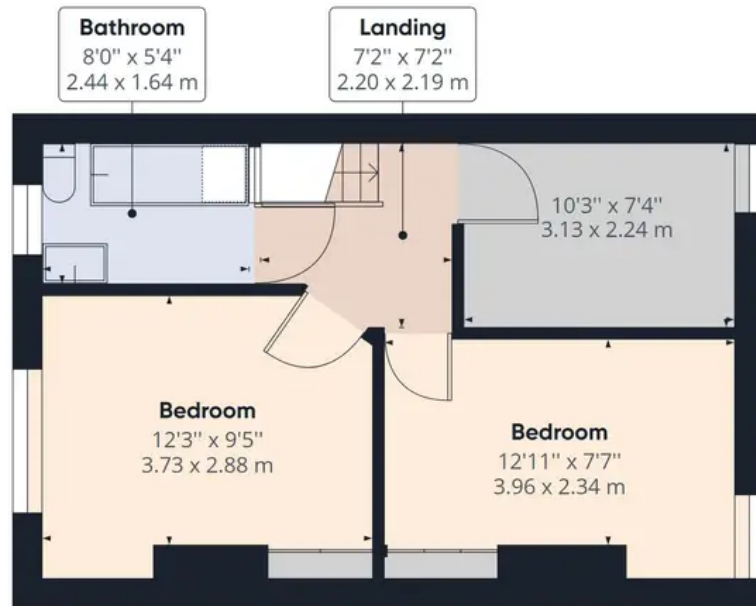
Tenure: Freehold

Council Tax band: C





Ground Floor



Floor 1

Approximate total area⁽¹⁾

1005.20 ft²

93.39 m²

(1) Excluding balconies and terraces

While every attempt has been made to ensure accuracy, all measurements are approximate, not to scale. This floor plan is for illustrative purposes only.

GIRAFFE 360



Chinneck Shaw

Bridge House, Milton Road, Portsmouth – PO3 6AN

023 9282 6731

hello@chinneckshaw.co.uk

www.chinneckshaw.co.uk/

Chinneck Shaw, Bridge House, Milton Road, PO3 6AN Consumer Protection from Unfair Trading Regulations 2008: These details are for guidance only and complete accuracy cannot be guaranteed. If there is any point which is of particular importance, verification should be obtained. The do not constitute a contract or part of a contract. All measurements are approximate. No guarantee can be given with regard to planning permissions or fitness for purpose. No apparatus, equipment, fixture or fitting has been tested. Items shown in the photographs are NOT necessarily included. Interested Parties are advised to check availability and make an appointment to view before travelling to see a property.