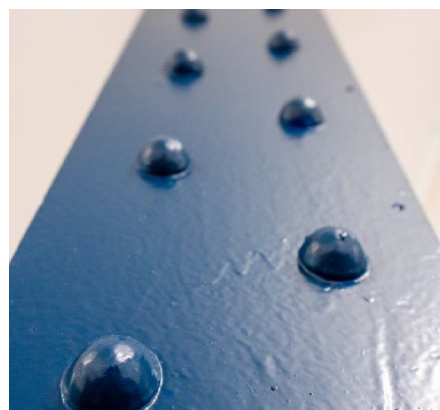




- SW10 -

Chelsea Wharf

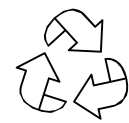
Situated next to the River Thames on Lots Road, Chelsea Wharf is in the centre of a vibrant mixed-use location favoured by corporate occupiers, retailers and media and creative businesses.



Our sustainability responsibilities:



Carbon Reduction



Sustainable Refurbishments



Improved Air Quality

These characterful offices and design studios are arranged around a very attractive central courtyard. Amenities are as shown. All units have good natural light, a mixture of electric and gas-fired central heating, manned security, 24-hour access, use of the landscaped courtyard overlooking the river and the amenities of the adjoining Cremorne Gardens.

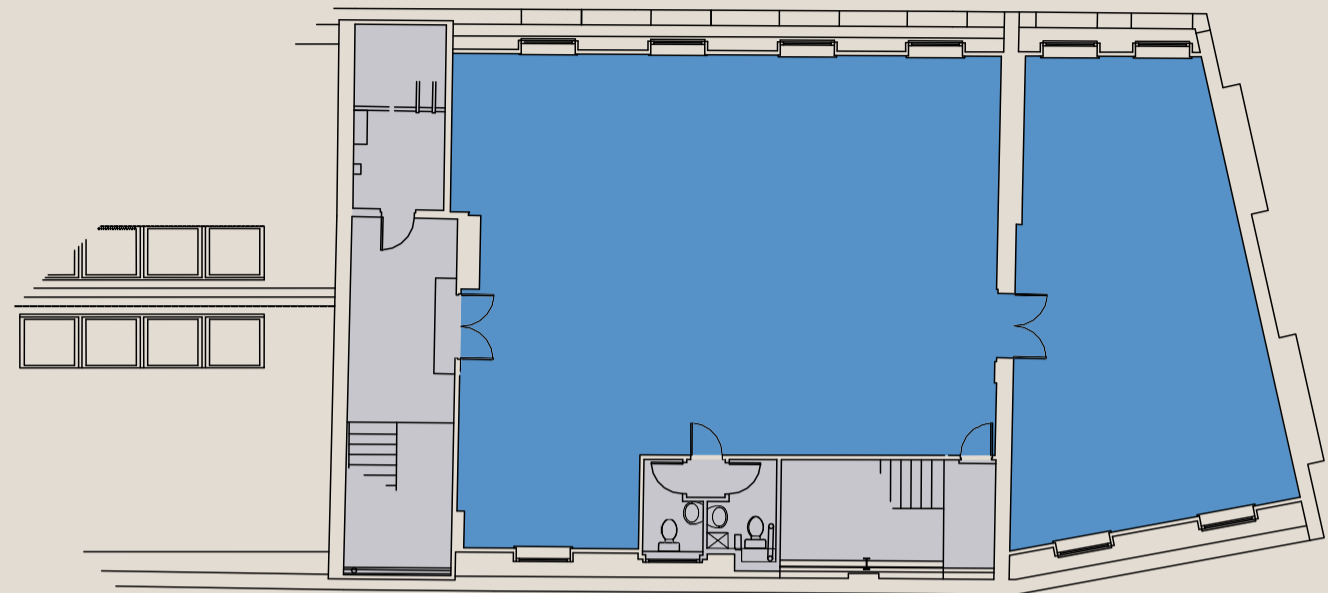
Availability

Description	Block	Floor	Size (sq ft)
Unit 2/3	B	G	2,215*
Unit 8	A	2nd	925*
Unit 9	B	2nd	655
Unit 14	C	4th	1,267
Unit 15	B	5th	1,107
Unit 18	G	Mezz. G/1st	840
Unit 19	G	1st	1,679
Unit 20a	D	1st	585
Unit 23	B	5th/6th	1,290
Unit 27	F	G	604
Unit 28	E	1st	2,510
Unit 29/30	F	1st	2,160
Unit 40/41	F	5th	1,913

*to be confirmed

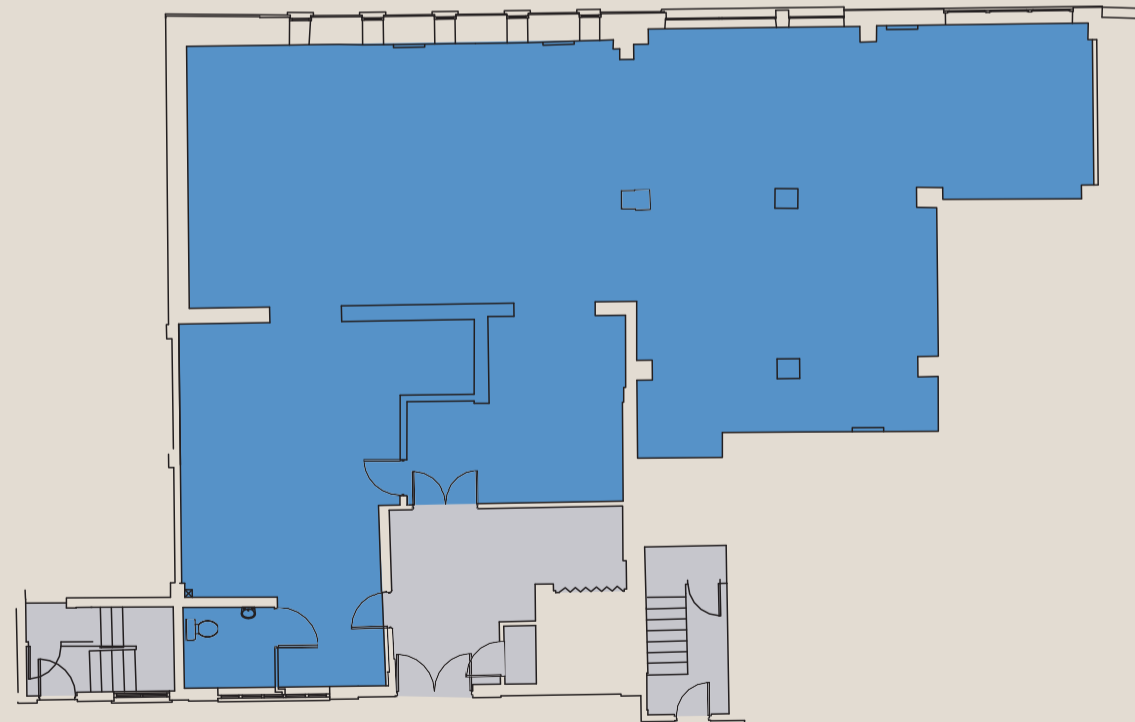
Unit 40/41

1,913 Sq Ft



Unit 2/3

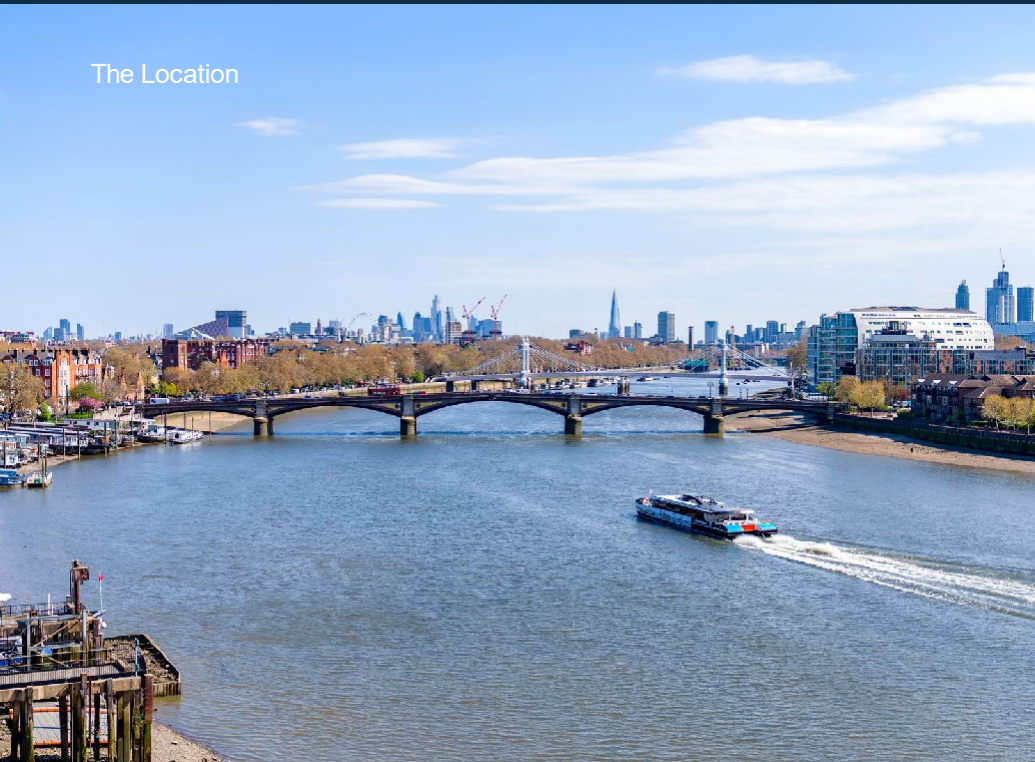
2,215* Sq Ft



■ Office ■ Core

Not to scale. Indicative Only.

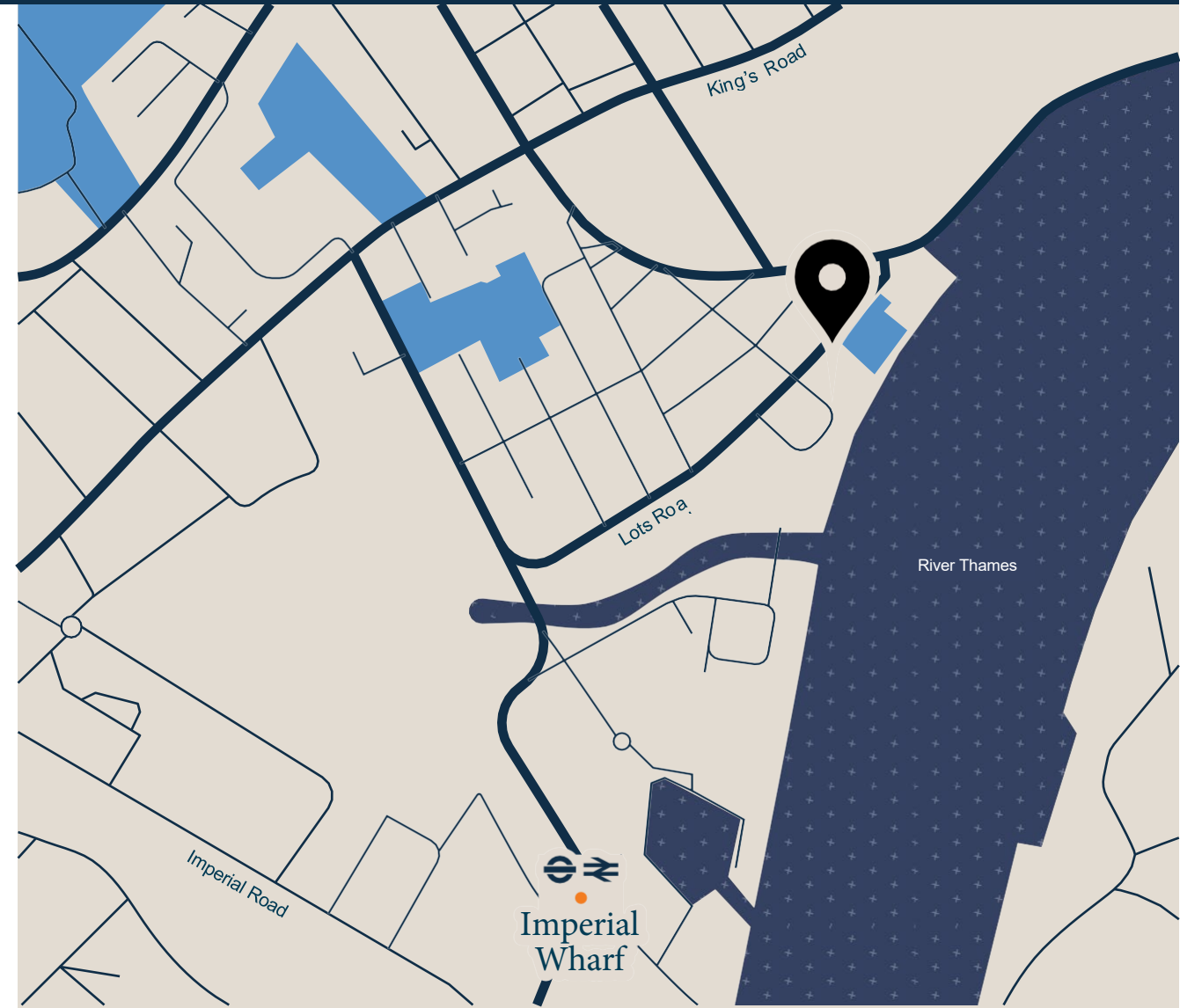
The Location



View from Chelsea Wharf



Building Plaque

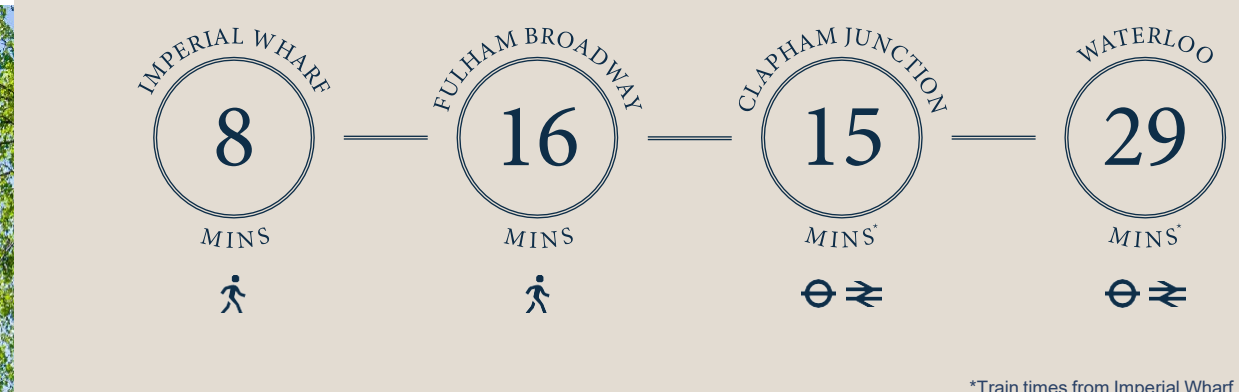


Cremorne Gardens

Chelsea Wharf

Chelsea Wharf, situated on the picturesque banks of the River Thames in London, is a prestigious and sought-after neighbourhood. It boasts a blend of modern luxury and historical charm, with its high-end residential complexes, fashionable boutiques, gourmet restaurants and art galleries. The areas waterfront location provides stunning views and a tranquil ambiance. Chelsea Wharf epitomises a sophisticated and cosmopolitan lifestyle, attracting discerning residents and visitors alike.

Chelsea Wharf



Tuckerman

Mark Fisher
020 3328 5370
mfisher@tuckerman.co.uk

Oscar Holmes
020 3328 5383
oholmes@tuckerman.co.uk

frost meadowcroft

Simon Kibble
07774 646 393
skibble@frostmeadowcroft.com

Jack Realey
07879 228 991
jrealey@frostmeadowcroft.com

Bedford Estates gives notice that these particulars are set out as a general outline only for the guidance of intending Purchasers or Lessees and do not constitute any part of an offer or contract. Details are given without any responsibility and any intending Purchasers, Lessees or Third Party should not rely on them as statements or representations of fact, but must satisfy themselves by inspection or otherwise as to the correctness of each of them. No person employed or engaged by Bedford Estates has any authority to make any representation or warranty whatsoever in relation to this property. December 2024