

THE FULHAM CENTRE

The Fulham Centre provides brand new cutting-edge, sustainable workspace flooded with natural light.

Having undergone a complete transformation with back-to-frame renovation and extension towards the end of last year, the building delivers high specification floorplates, striking rooftop garden, private terraces, superb end of journey facilities and excellent transport links across London.

Whilst most of the building is now under offer, there is 2,500 to 12,700 sq ft of workspace still available across the 1st and 2nd floors on either traditional or managed leases.

The 1st floor is ready for fitting out. Romulus' CustomBuild design and fit out service is on hand to accommodate any client requests.

The 2nd floor is available fully fitted to a high specification, with a private east facing terrace.

Workspace by Romulus





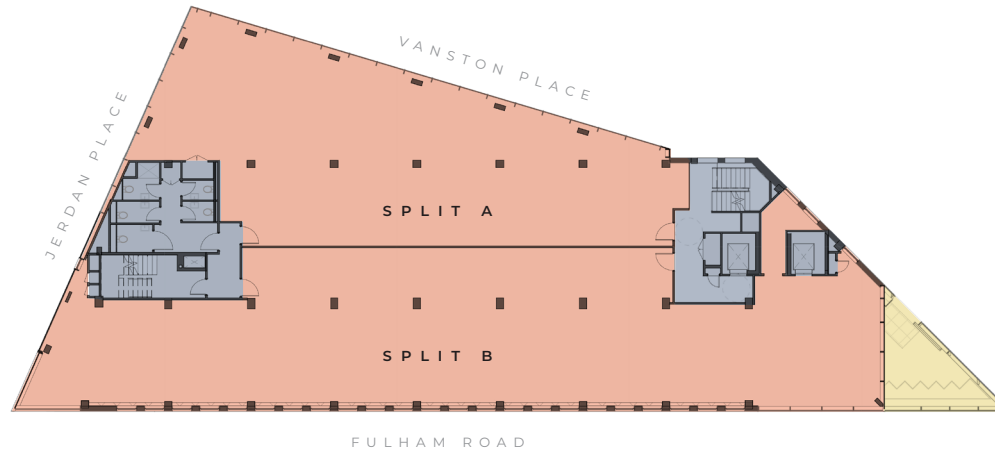
ROOFTOP GARDEN



2ND FLOOR WORKSPACE

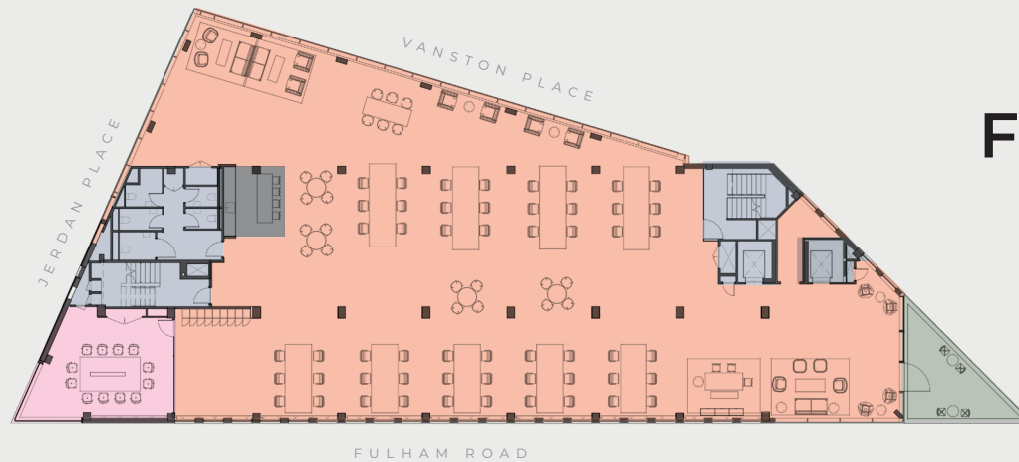


GROUND FLOOR RECEPTION



1ST FLOOR

Split A: 2,560 sq ft
Split B: 3,540 sq ft



2ND FLOOR

6,367 sq ft
Terrace: 173 sq ft



Jamie Giffard-Taylor
0207 084 6929
jamieg@romulusuk.com



Stuart Austin
07912 299 725
stuart.austin@eu.jll.com



Shaun Wolfe
07900 911 135
swolfe@frostmeadowcroft.com

Terms:
To be let on new flexible leases. Rent, rates and service information upon application to the agents.

EPC:
Projected B
The Fulham Centre
20 Fulham Broadway
London SW6 1AH