

# MATRIX STUDIOS

*Est. 1977*

*"Where legacy meets creativity"*

AVAILABILITY

[BOOKINGS@MXSTUDIOS.COM](mailto:BOOKINGS@MXSTUDIOS.COM)

020 7384 6400



# MATRIX STUDIOS

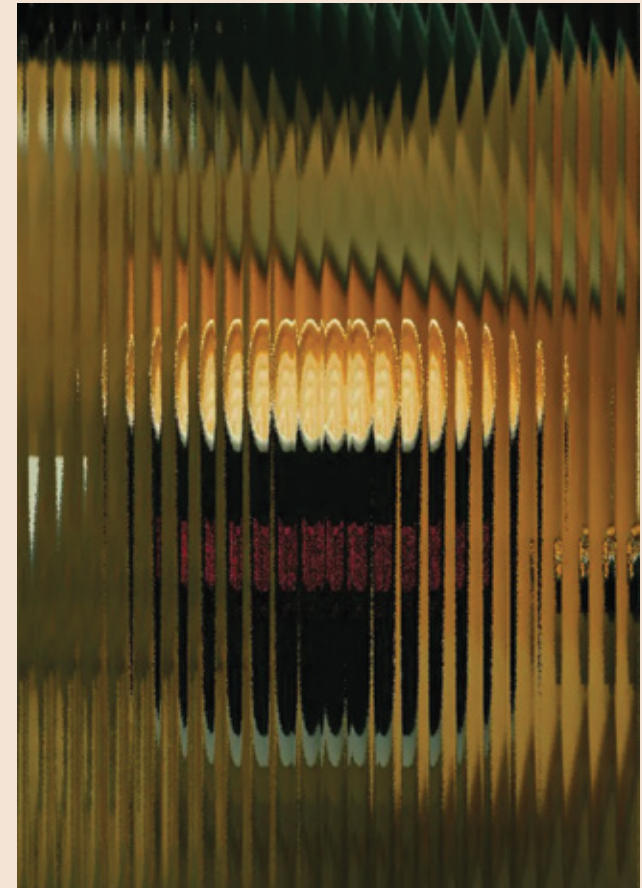
*Est. 1977*

## FOLLOW IN THE FOOTSTEPS OF THE LEGENDS WHO HAVE GRACED OUR HALLS.

Join our extraordinary community of industry legends, budding entrepreneurs, and creative visionaries at Matrix Studios.

For nearly 50 years, our iconic studios have echoed with the melodies and voices of legendary artists, shaping the very fabric of London music.

Today, we have evolved into a versatile workspace for the modern creative mind.





## WELCOME TO MATRIX STUDIOS

From music, travel, PR, architecture, and many more—our doors are always open to those who dare to dream.



# MATRIX STUDIOS

*Est. 1977*

“MATRIX STUDIOS ISN'T JUST A  
WORKPLACE; IT'S A SANCTUARY WHERE  
IDEAS ARE NURTURED, DREAMS ARE  
REALISED, AND BOUNDARIES ARE  
SHATTERED.”

-MATRIX TENANT





# OUR PERKS

## ACCESSIBLE ALL HOURS

Matrix is open early to late, 7 days a week. Night access can be scheduled upon request.

## STATE-OF-THE-ART RECORDING STUDIOS

The industry's first choice for making musical history, our studios are available in an array of different set ups and sizes.

## FLEXIBLE CONTRACTS

The complex sets itself apart by offering flexible contracts for individual tenant needs.

## BIKE PARKING

The best way to get around South West London, cycling is accommodated for with plenty of bike parking in the courtyard.

## SHOWERS

There are several showers in the building, catering to all routines and schedules.

## NETWORKING OPPORTUNITIES

Collaboration is the currency at matrix, with countless opportunities for networking.

## DISCRETION & PRIVACY

Hidden from the hustle and bustle, the complex is gated so tenants can enjoy seclusion and privacy.

## MEETING ROOMS

Two spacious meeting rooms are available for booking, free as part of the tenancy. Catered meetings are available upon request.

## CAFÉ & TERRACE

The meeting point for artists, creatives and businesses, matrix's vibrant café offers Beverages and freshly cooked food.

## CONCIERGE RECEPTION

Matrix's front desk concierge manage deliveries, security, maintenance and anything else that makes the work days seamless.

## PRIVATE GYM, REFORMER & PERSONAL TRAINING

Tenants benefit from a discounted rate at lift studios, tailored training with a holistic approach to fitness and wellness.

## DOG FRIENDLY

Matrix welcomes furry friends to join their owners at work!



# MATRIX

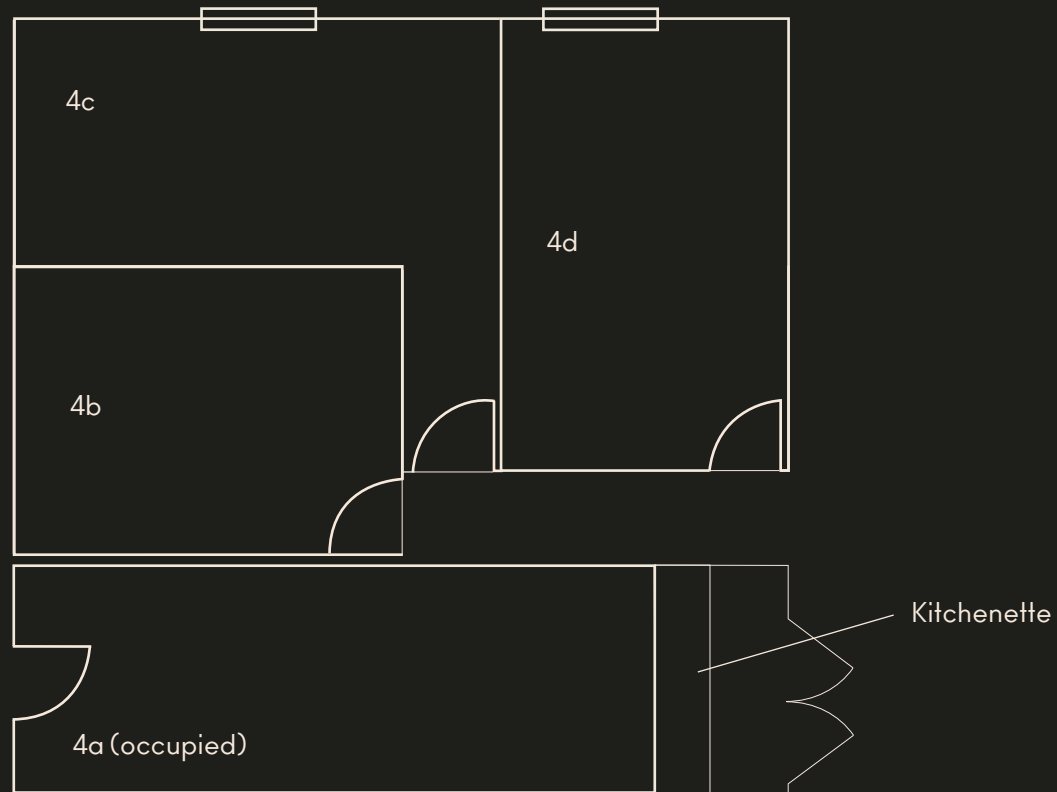
*Est. 1977*

OUR AVAILABILITY

[BOOKINGS@MXSTUDIOS.COM](mailto:BOOKINGS@MXSTUDIOS.COM)

020 7384 6400

## THE MATRIX CLUB



| DESCRIPTION  | UNIT | DESK COUNT | PRICE       | FLOOR        | AVAILABILITY |
|--|------|------------|-------------|--------------|--------------|
| Brand-new to the building, the Matrix Club will be a premium suite of units on the ground floor equipped with private kitchenette, tea station and corridor. | 4b   | 3-5        | £1.8k + vat | GROUND FLOOR | NOVEMBER 24  |
|  | 4c   | 4-7        | £1.9k + vat | GROUND FLOOR | NOVEMBER 24  |
|  | 4d   | 4-6        | £2k + vat   | GROUND FLOOR | NOVEMBER 24  |



UNIT 34

8-10 desks



| DESCRIPTION  | UNIT | DESK COUNT | PRICE       | FLOOR       | AVAILABILITY |
|--|------|------------|-------------|-------------|--------------|
| Spacious loft-style unit, naturally lit by skylights, Easy access to kitchen and breakout zones. | 34   | 8-10       | £2940 + vat | FIRST FLOOR | OCTOBER 24   |



## UNIT 6

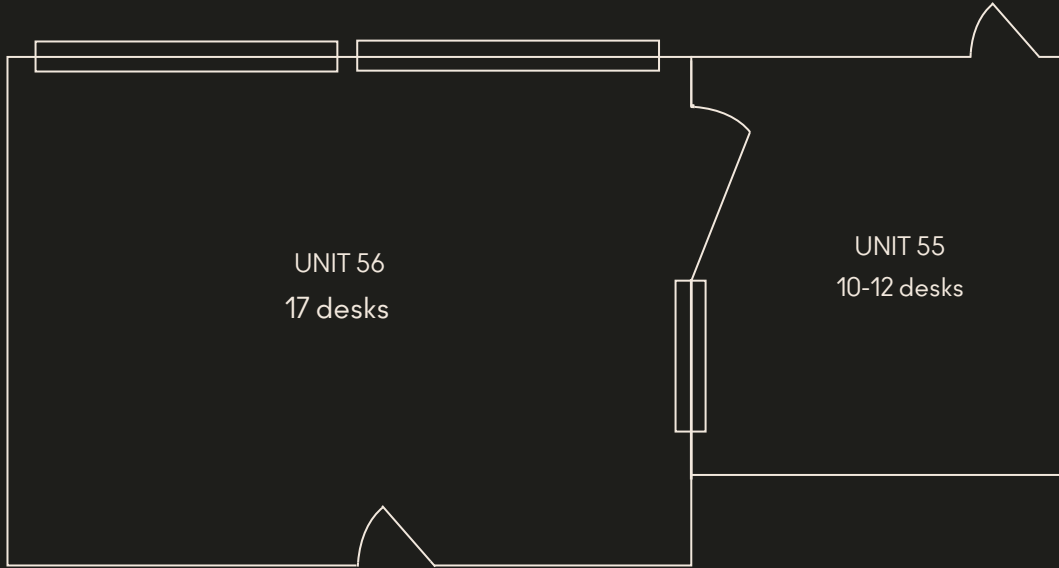
6-8 desks



| DESCRIPTION   | UNIT | DESK COUNT | PRICE       | FLOOR        | AVAILABILITY |
|---|------|------------|-------------|--------------|--------------|
| Naturally lit ground floor unit , convenient access to downstairs kitchen, break out zones and meeting rooms. | 6    | 6-8        | £2450 + vat | GROUND FLOOR | OCTOBER 24   |



## UNIT 55 & 56



| DESCRIPTION   | UNIT | DESK COUNT | PRICE       | FLOOR     | AVAILABILITY     |
|---|------|------------|-------------|-----------|------------------|
| Spacious first floor unit with large windows overlooking the courtyard, attached to generously sized smaller unit next door, perfectly suited for a private meeting room. | 56   | 17         | £5.5k + vat | 1st FLOOR | DECEMBER 24-2025 |
|   | 55   | 11         | £3k + vat   | 1st FLOOR | DECEMBER 24-2025 |



# MATRIX STUDIOS

*Est. 1977*



Matrix Studios,  
91 Peterborough Rd,  
Parsons Green,  
London,  
SW6 3BU

+44 (0) 20 7384 6400

[BOOKINGS@MXSTUDIOS.COM](mailto:BOOKINGS@MXSTUDIOS.COM)

