

Spinnaker House, Battersea Reach
Wandsworth, SW18 1FS

PROPERTY SUMMARY

A gorgeous bright and spacious three-bedroom apartment on the tenth floor, available in the award winning Battersea Reach development.

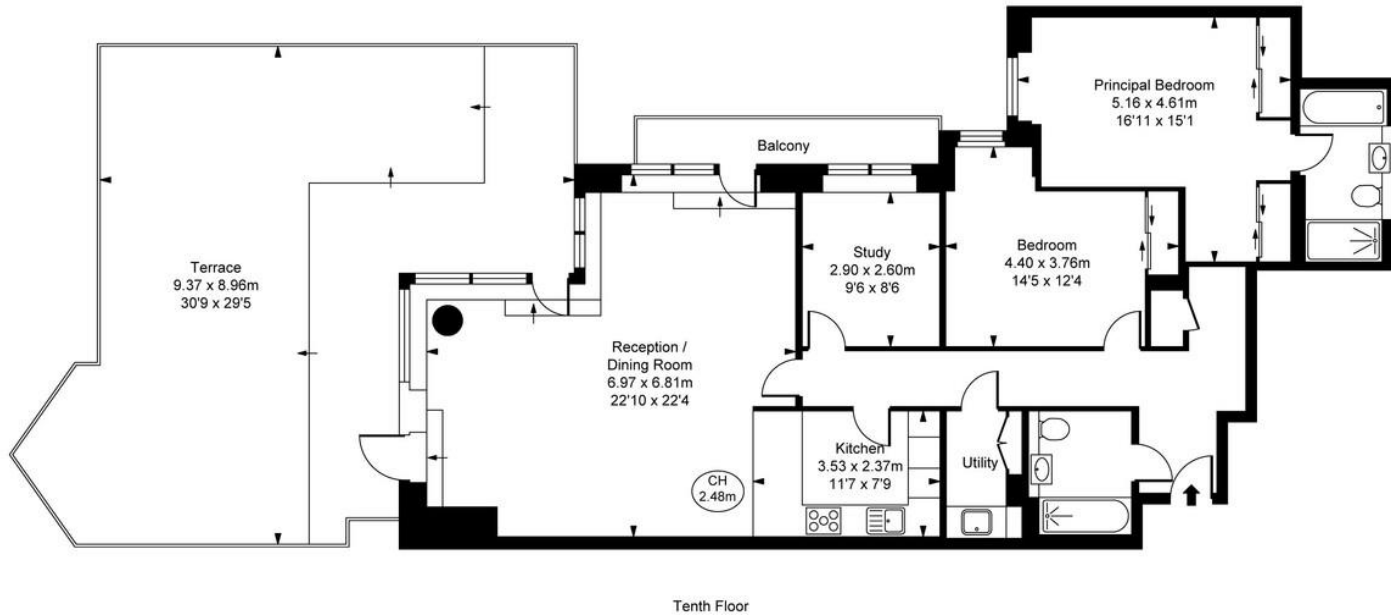
This exceptional apartment comprises three bedrooms, two bathrooms, semi open plan kitchen/reception room, large wrap around terrace with wonderful views over the river Thames and useful utility room. Secure underground parking for two cars included in the sale.







Spinnaker House,
Juniper Drive, SW18
Approximate Gross Internal Area
1402 sq ft / 130.25 sq m
(CH = Ceiling Heights)



This plan is not to scale. It is for guidance and not for valuation purposes.
All measurements and areas are approximate only, and have been prepared in accordance with the current edition of the RICS Code of Measuring Practice.
© Fulham Performance

LOCAL AUTHORITY
Wandsworth Borough Council

TENURE
Leasehold

COUNCIL TAX BAND
Band H

VIEWINGS
By prior appointment only

Energy Efficiency Rating		Current	Potential
Very energy efficient - lower running costs			
(92-100)	A		
(81-91)	B	85	86
(69-80)	C		
(55-68)	D		
(39-54)	E		
(21-38)	F		
(1-20)	G		
Not energy efficient - higher running costs			
England, Scotland & Wales		EU Directive 2002/91/EC	

Agents Note: Whilst every care has been taken to prepare these particulars, they are for guidance purposes only. All measurements are approximate and are for general guidance purposes only and whilst every care has been taken to ensure their accuracy, they should not be relied upon and potential buyers/tenants are advised to recheck the measurements



4 Vicentia Court
Bridges Wharf
London
SW11 3GY

02073522455
info@hgproperty.co.uk
www.hgproperty.co.uk