



31 Goring Road, Ipswich

Guide Price **£375,000**





31 Goring Road

Ipswich, Ipswich

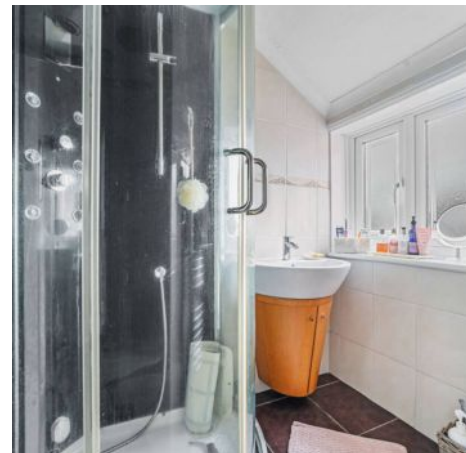
This charming detached property, featuring a wealth of amenities, including three spacious bedrooms, two inviting reception rooms and convenient parking facilities.

Council Tax band: D

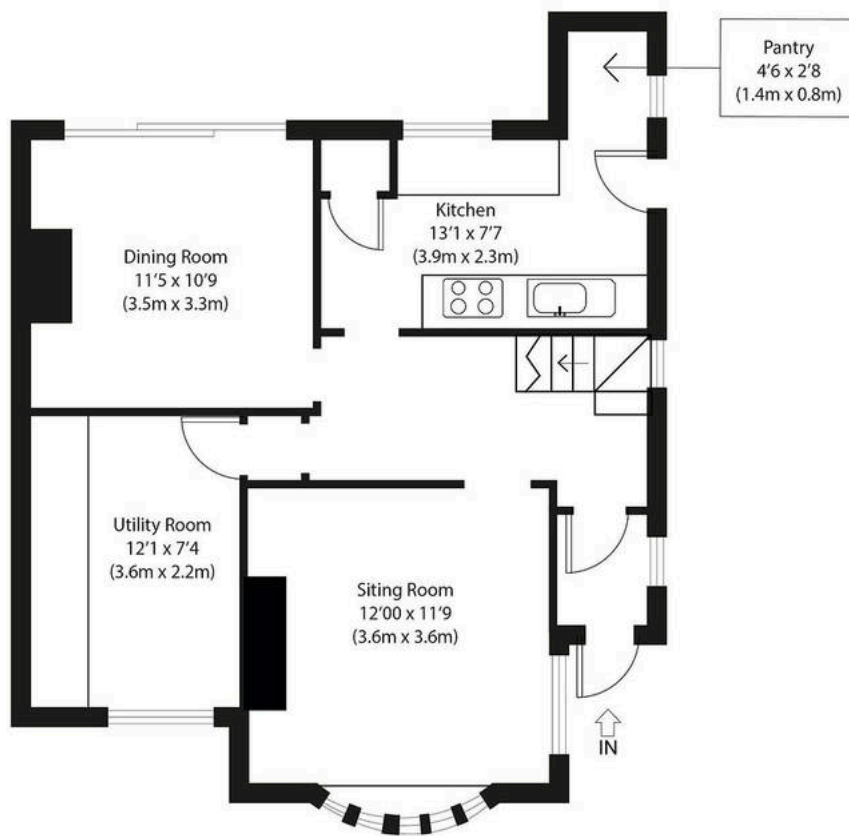
Tenure: Freehold

EPC Energy Efficiency Rating: D

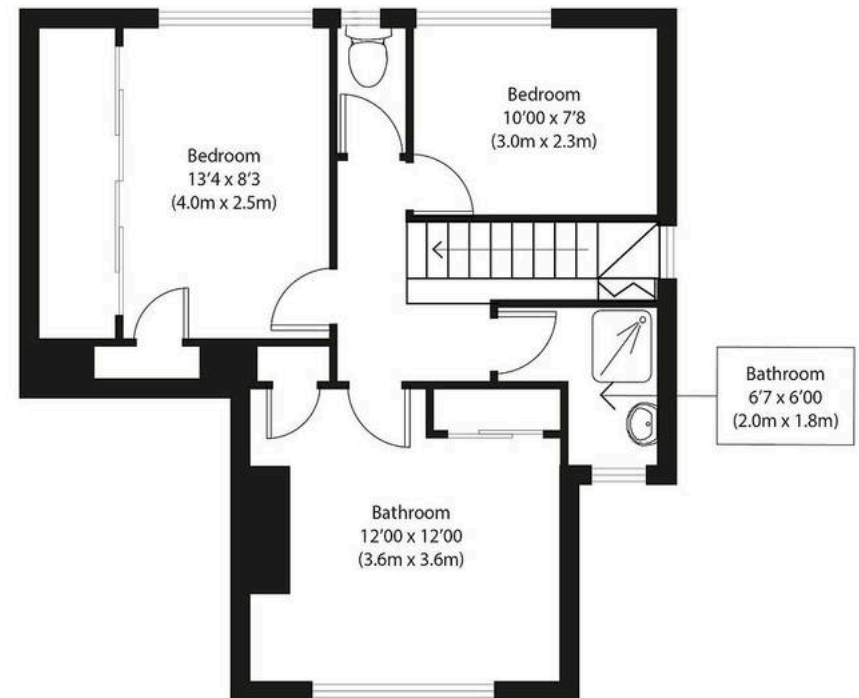
EPC Environmental Impact Rating: D







Ground Floor



First Floor


Approximate Gross Internal Area
1040 sq ft (97 sq m)

Disclaimer: Floorplan measurements are approximate and are for illustrative purposes only.
 While we do not doubt the floor plan accuracy and completeness, you or your advisors should
 conduct a careful, independent investigation of the property in respect of monetary valuation.
 copyright www.ojphoto.co.uk





Potters Estate Agents

Potters Estate Agents, 6 Market Hill – IP12 4LU

01394 447487 • enquiries@pottersestateagents.com • www.pottersestateagents.com/