



63 Addiscombe Road, East Croydon

Offers Over £550,000

ShineRocks
PROPERTY AGENTS

63 Addiscombe Road

Croydon, Croydon

A detached three bedroom bungalow, with two reception rooms and two bath/shower rooms, situated on a level plot right beside East Croydon Medical Centre, with private off street parking for two to three cars, located within five minutes walk of East Croydon station. This property now offers potential to update and modernise, a similar size property with tiny garden sold around the corner in Blake road for £700,000 in 2019. Spacious entrance hall, principal bedroom with en-suite, two/three further bedrooms (the smallest bedroom would make an ideal study), family bathroom, living room with bay window overlooking front garden, family room with double doors to rear garden, kitchen with larder cupboard and door to conservatory and further store cupboard. Front garden with off street parking for two to three cars, gated access to rear garden. Level fully fenced rear garden now requiring some tender loving care.

Council Tax band: E

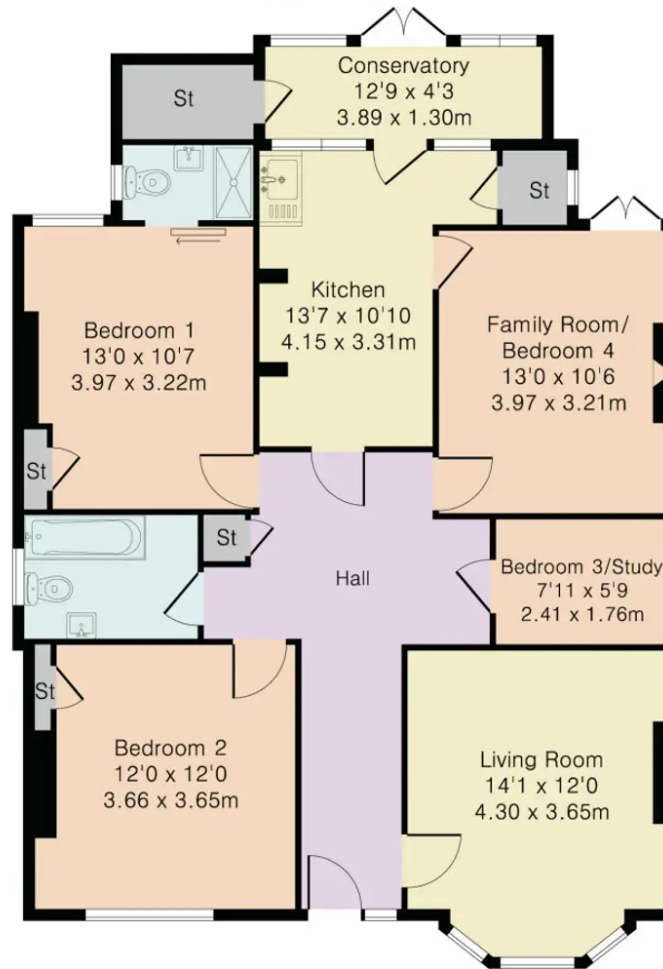
Tenure: Freehold

- THREE/FOUR BEDROOM DETACHED BUNGALOW
- FAMILY BATHROOM AND EN-SUITE
- TWO RECEPTION ROOMS
- LEVEL PLOT WITH EXTENSION POTENTIAL
- REQUIRING UPDATING AND MODERNISATION
- OFF STREET PARKING FOR 2-3 CARS AND 5 MINUTES WALK FROM EAST CROYDON STATION
- COUNCIL TAX - E
- EPC - E





Approximate Gross Internal Area 1097 sq ft – 102 sq m



ShineRocks Estate Agents

ShineRocks Property Agents, 4 Russell Parade, Russell Hill Road - CR8 2LE

020 3918 2936

enquiries@shinerocks.co.uk

www.shinerocks.co.uk

ShineRocks
PROPERTY AGENTS

For clarification purposes, we wish to inform prospective purchasers that these details have been prepared as a general guide only. We have not carried out a detailed survey, nor tested the services, appliances and specific fittings. Room sizes are approximate and generally to maximum dimensions and should not be relied upon for carpets or furnishings. Whilst every attempt has been made to ensure the accuracy of the floor plan contained herein, measurements of doors, windows and room sizes are approximate and no responsibility is taken for any error, omission or mis-statement. This plan is for illustration purposes only and should only be used as such.