



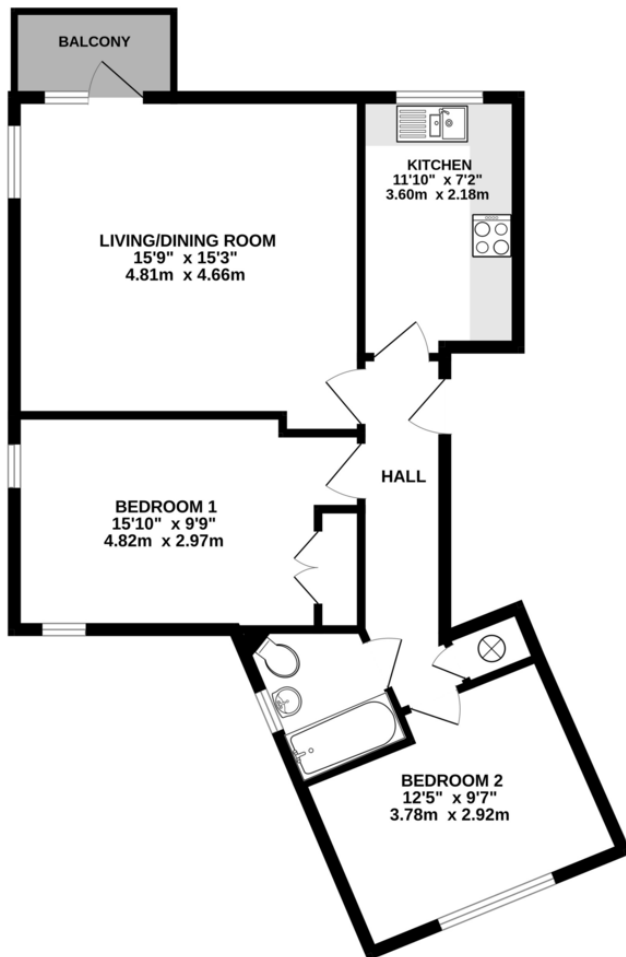
CARMICHAEL CLOSE, , HA4 6LG £325,000



The flat features a large living room with access to a balcony, a modern fitted kitchen, two generous double bedrooms access, and a family bathroom. The flat also benefits from residents parking and proximity to several excellent local schools, including Ruislip Gardens Primary and Ruislip High School. Ruislip Gardens station provides fast and frequent Central line services to London, while the Metropolitan and Piccadilly lines are also nearby. The A40, M40 and M25 are easily reachable for drivers.



2ND FLOOR
679 sq.ft. (63.1 sq.m.) approx.



TOTAL FLOOR AREA : 679 sq.ft. (63.1 sq.m.) approx.

Whilst every attempt has been made to ensure the accuracy of the floorplan contained here, measurements of doors, windows, rooms and any other items are approximate and no responsibility is taken for any error, omission or mis-statement. This plan is for illustrative purposes only and should be used as such by any prospective purchaser. The services, systems and appliances shown have not been tested and no guarantee as to their operability or efficiency can be given.
Made with Metropix ©2023



