



Wisteria Barn, Ducklington

Wisteria Barn, 3 Bartholomew Close

Ducklington OX29 7UJ

£425,000

Guide Price



Enjoying a popular position in the pretty village of Ducklington, Wisteria Barn is an attractive stone built semi-detached house offered for sale with no onward chain. The spacious accommodation has been well maintained and offers an entrance hall, light and airy sitting room with patio doors to the garden and well-appointed kitchen. A separate reception room opens to a rear utility/rear lobby. To the first floor the principal bedroom has a range of built-in wardrobes and ensuite bathroom with a second double and the main bathroom. The pretty front garden is set with low maintenance in mind and the adjacent garage also provides a parking space in front. The delightful rear garden affords a good degree of privacy with a gate providing access for bins to the road. The quiet spot in this desirable village make this a fabulous opportunity to enjoy rural living at its very best.

Ducklington village is a mixture of very pretty older period property and more recent developments. It has a beautiful historic centre including a picturesque duck pond, a thriving primary school, Church, active sports club and the very friendly Bell Pub.

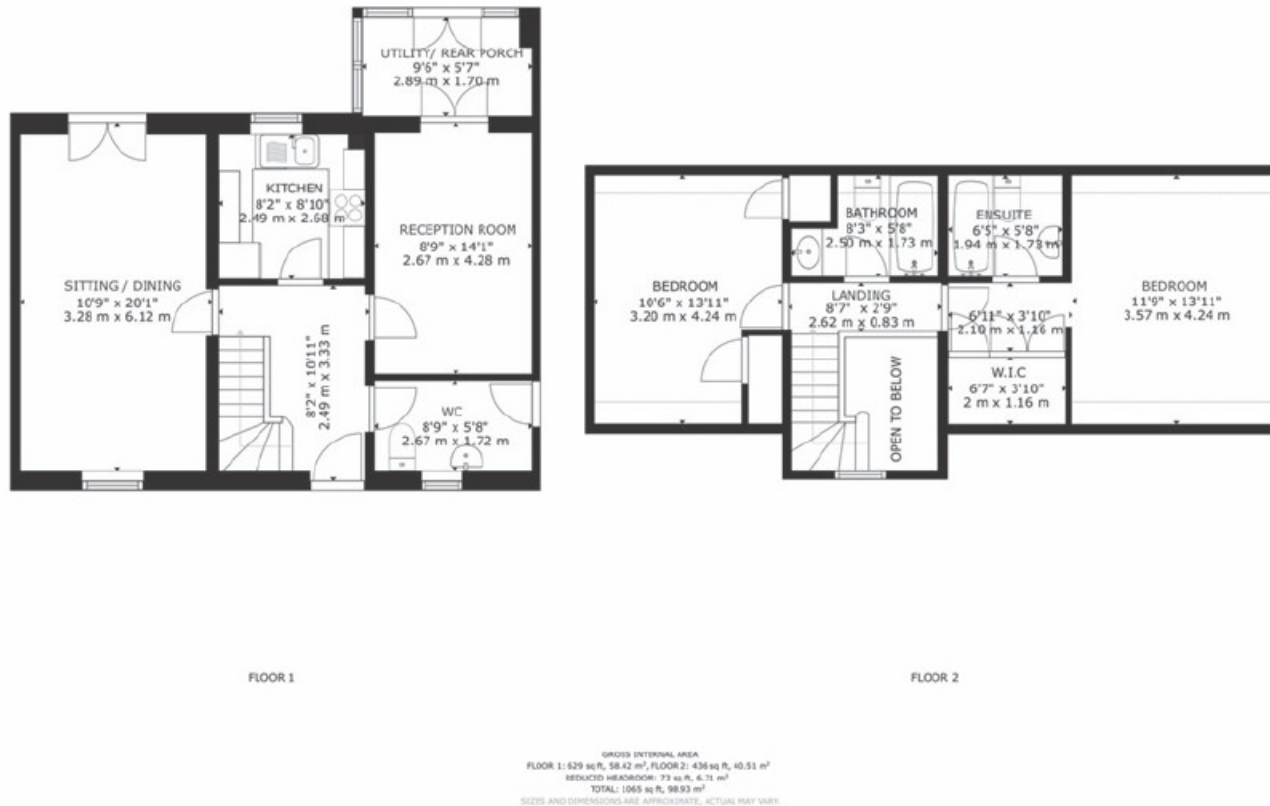
Agent's Comment

"This individual home is an absolute must see to fully appreciate the super presentation and fabulous position within this charming village"





IMPORTANT NOTICE: These particulars are for information purposes only and do not in whole or in part constitute or form part of any offer or contract, nor should any statement obtained herein be relied upon as a statement or representation of fact. Breckon & Breckon do not test whether the services connected to the property, heating systems and domestic appliances are in working order. We therefore recommend that the purchaser obtains verification from their surveyor or solicitor. Whilst every attempt has been made to ensure the accuracy of the floor plans contained here, measurements of doors, windows and rooms are approximate and no responsibility is taken for any error, omission or mis-statement. These plans are for representation purposes only as defined by the RICS code of measuring practice and should be used as such by any possible purchaser.



Witney
 01993 776 775
 10 Market Square
 Witney, Oxfordshire
 OX28 6BB
 witney@breckon.co.uk
 breckon.co.uk



Oxford city centre
 Tel: 01865 244735 (sales)
 Tel: 01865 201111 (letting)

Summertown
 Tel: 01865 310300 (sales)
 Tel: 01865 558999 (apartments)

Headington
 Tel: 01865 750200 (sales)
 Tel: 01865 763999 (letting)

Abingdon
 Tel: 01235 550 550 (sales)
 Tel: 01235 554 040 (letting)

Woodstock
 Tel: 01993 811881 (sales)
 Tel: 01993 810100 (letting)

Witney
 Tel: 01993 776775 (sales)
 Tel: 01865 201111 (letting)



Council Tax Band:
 Band D - £2276.52

Local Authority:
 West Oxfordshire District Council

