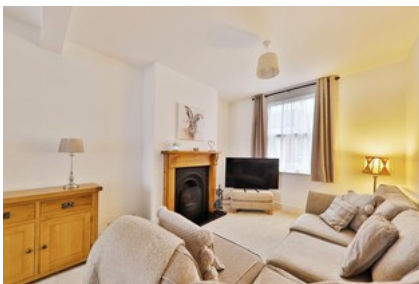




Grayburn Lane, Beverley

INVITING OFFERS BETWEEN £240,000 - £260,000



- ✓ Central Location In The Heart Of Historic Beverley
- ✓ Impeccably Presented Home
- ✓ Cozy Lounge And Inviting Dining Room
- ✓ Beautiful Kitchen With Top-of-the-line Appliances
- ✓ Charming Courtyard For Relaxation
- ✓ Freehold
- ✓ Council Tax Band B
- ✓ Epc Rating E

Guide Price **£240,000**

Bedroom 2 Bathroom 1 Reception 1