



A FANTASTIC FOUR BEDROOM CHARACTER HOME WITH SCOPE TO EXTEND (STPP)

Pinner Road, Pinner, HA5 5QZ

ROBSONS

ENTRANCE HALLWAY • GUEST CLOAKROOM • TWO RECEPTION ROOMS • KITCHEN / DINING ROOM • UTILITY • FOUR DOUBLE BEDROOMS • FAMILY BATHROOM • SEPARATE SHOWER ROOM • SOUTH FACING REAR GARDEN • OFF-STREET PARKING • SCOPE TO EXTEND (STPP)

Description

Full of character and charm, this wonderful four-bedroom, two-bathroom Edwardian property makes the ideal family home with its bright and spacious interiors, a large south-facing garden and scope to extend (STPP). This charming property is perfectly placed for a number of highly regarded schools, including St John Fisher Primary School and Nower Hill High School.

The ground floor comprises a welcoming entrance hallway featuring original stained-glass windows and parquet wooden flooring. There is a generous front aspect lounge with a bay window and a feature fireplace, a separate double-length living/family room with an open fire and French doors opening out to the garden, and a superb kitchen / dining room with plenty of storage space and room for a family dining table & chairs. The kitchen can be accessed via the main hallway as well as having adjoining doors through to the living / family room, perfect for families and entertaining. Completing the ground floor is a utility room and a guest cloakroom.





To the first floor there are four well-appointed double bedrooms with one featuring a character fireplace, a three-piece family bathroom and a separate shower room. The property further benefits from a large loft space with the potential to extend and create another floor (STPP).

Externally, this family home boasts a south-facing rear garden that is laid to lawn with a patio area. To the front there is a paved driveway allowing off-street parking for two cars.

Location

Situated a short distance from Pinner high street and a variety of shopping facilities, restaurants, coffee houses and popular supermarkets, as well as being within easy reach of both Hatch End and North Harrow high streets. For commuters, Nearby Pinner and North Harrow stations provide a regular service into London via the Metropolitan Line, with Headstone Lane and Hatch End stations providing the Overground services. The area is well served by local schooling with St John Fisher Primary School and Nower Hill High School within walking distance, and the ever popular Pinner Park Primary School just a short distance away. There are plenty of children's parks/playgrounds and recreational facilities within the area.

Additional Information

Tenure: Freehold

Local Authority: London Borough of Harrow

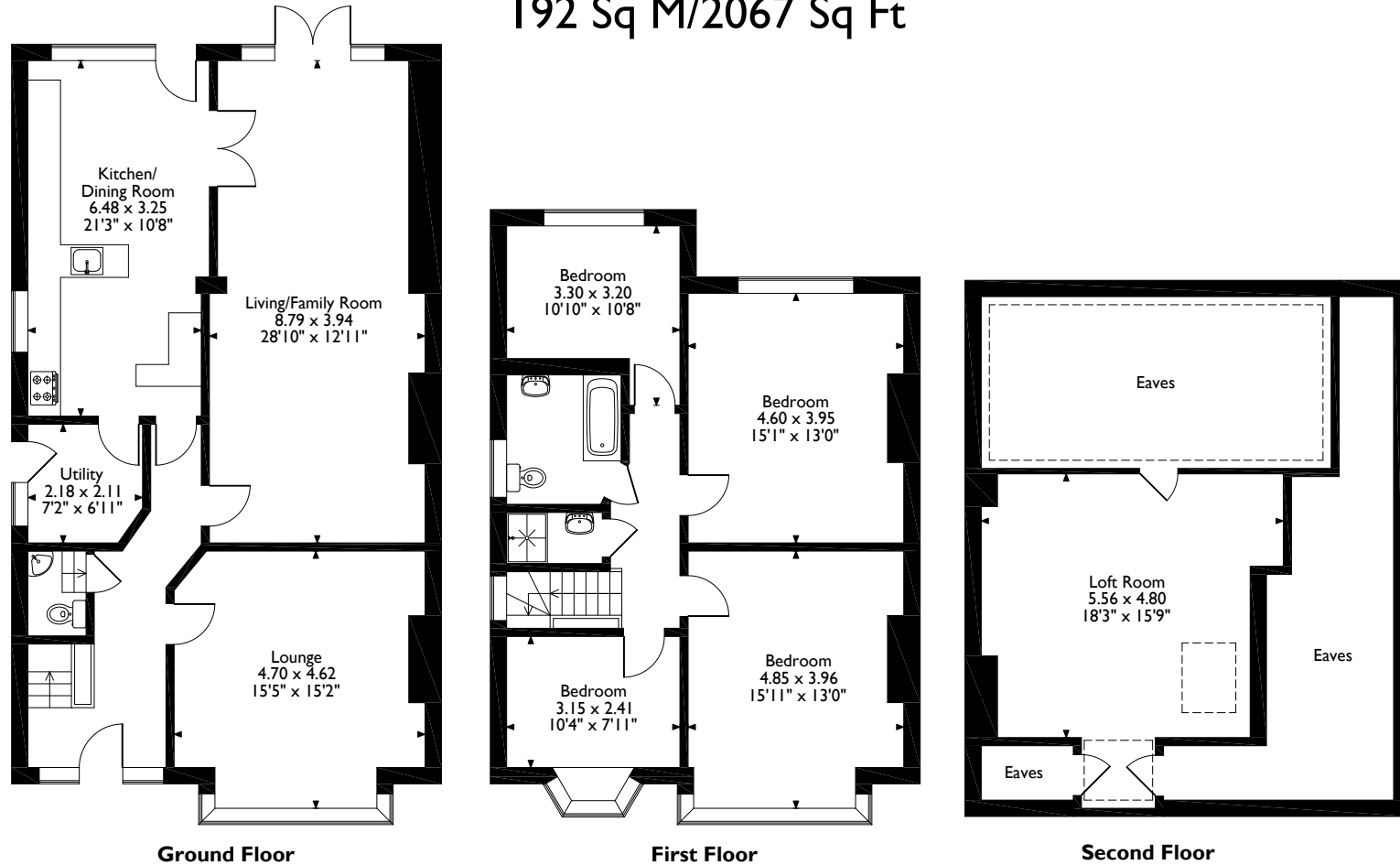
Council Tax: Band F

Energy Efficiency Rating: Band D



Pinner Road, Pinner

Approximate Gross Internal Area 192 Sq M/2067 Sq Ft



Please note that the location of doors, windows and other items are approximate and this floorplan is to be used for illustrative purposes only. Unauthorized reproduction is prohibited.



1 High Street, Pinner, Middlesex, HA5 5PJ
Tel: 0208 866 8083 Pinner@robsonswb.com
www.robsonswb.com

www.
the
londonoffice.co.uk
40 ST JAMES'S PLACE SW1