



Wraysbury, Berkshire

£1,100 *per calendar month*

This detached studio is ideal for someone looking for Monday to Friday accommodation. With stunning views across open fields, yet within walking distance of the village centre. The property is offered in excellent condition and is furnished. Comprises open plan living/kitchen/bedroom and modern shower room and parking for one car. The kitchen area has a built-in oven, fridge and microwave. Please note there are no facilities for a washing machine. Single occupancy only. Available Now. Rent includes utility bills. Energy rating: D

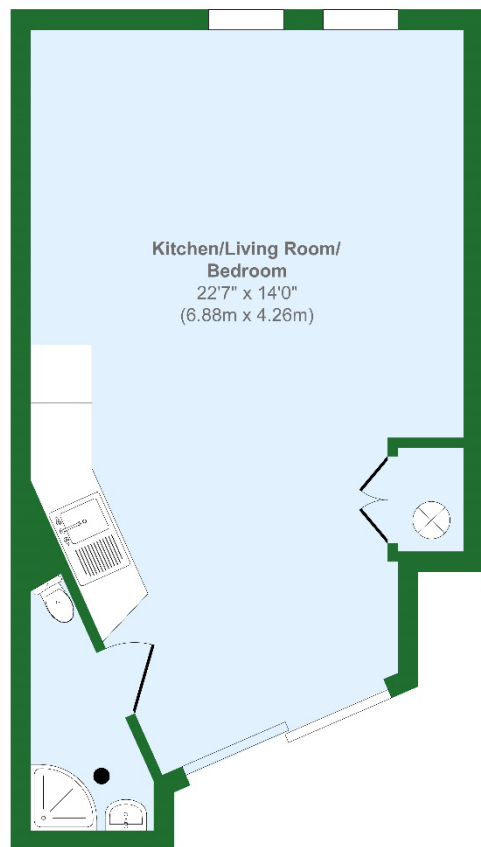


B.S. Bennett Estate Agents

2 Staines Road, Wraysbury, Staines, Middlesex, TW19 5BS
t: 01784 483839 e: post@bsbennett.co.uk

bsbennett.co.uk

B. S. BENNETT



Shower Room
6'9" x 6'0"
(2.05m x 1.84m)

Floor Plan

B. S. BENNETT

Approx. Gross Internal Floor Area 315 sq. ft / 29.33 sq. m
Illustration for identification purposes only, measurements are approximate, not to scale.
Produced by Elements Property



Location:

Wraysbury is a thriving Thameside village with all the amenities that one could ask for including charming country pubs, local post office/convenience store, pharmacy, hardware shop, newsagent, The Kitchen Cafe and Co-op. Wraysbury offers a unique opportunity to those seeking to combine traditional values of a village environment together with the accessibility and convenience of modern day living. Within a short drive you will find Windsor itself, steeped in history with its Castle and Royal connections. Staines town centre provides an excellent array of shopping facilities, restaurants and cinema. Ideal for commuters with Wraysbury station providing direct links into Windsor and London Waterloo, together with easy access of Motorways M25, M4, M3 and London Heathrow Airport.

Deposit:

5 weeks rent which is £1,269.00 for this rental. The deposit is used to cover any potential damages. The deposit will be protected by one of the approved schemes.

Viewing:

Strictly by appointment via B.S. Bennett Estate Agents. Telephone 01784 483 839