



34 Weatherthorn, Orton Malborne
Peterborough





34 Weatherthorn

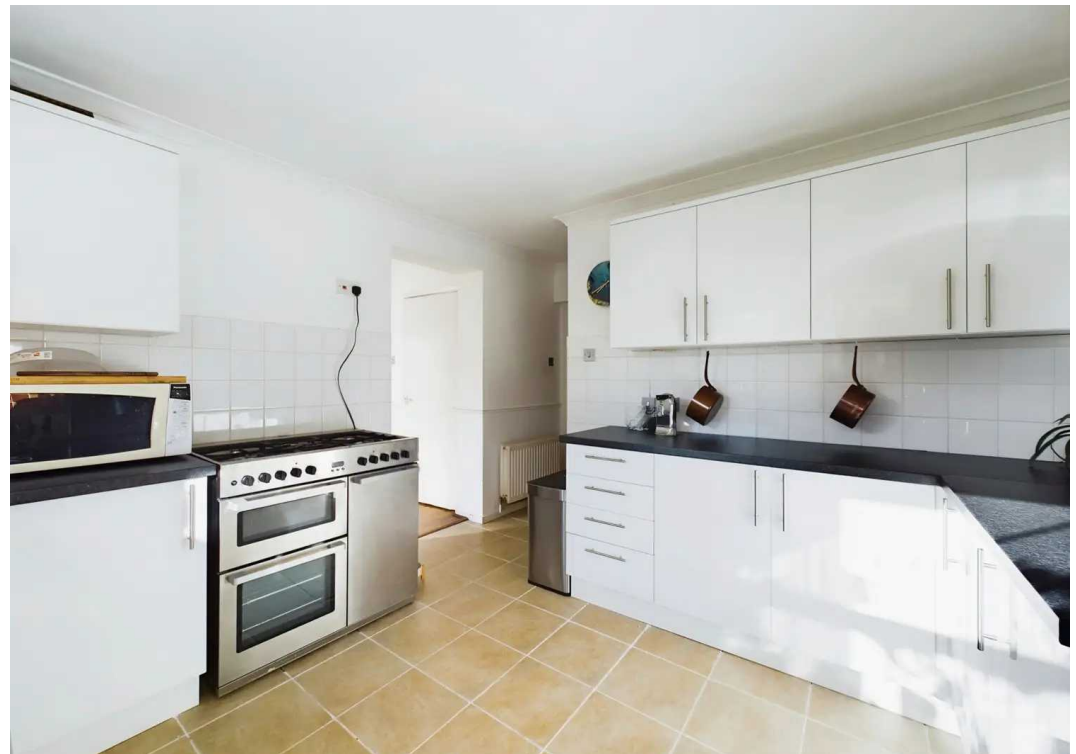
Orton Malborne, Peterborough

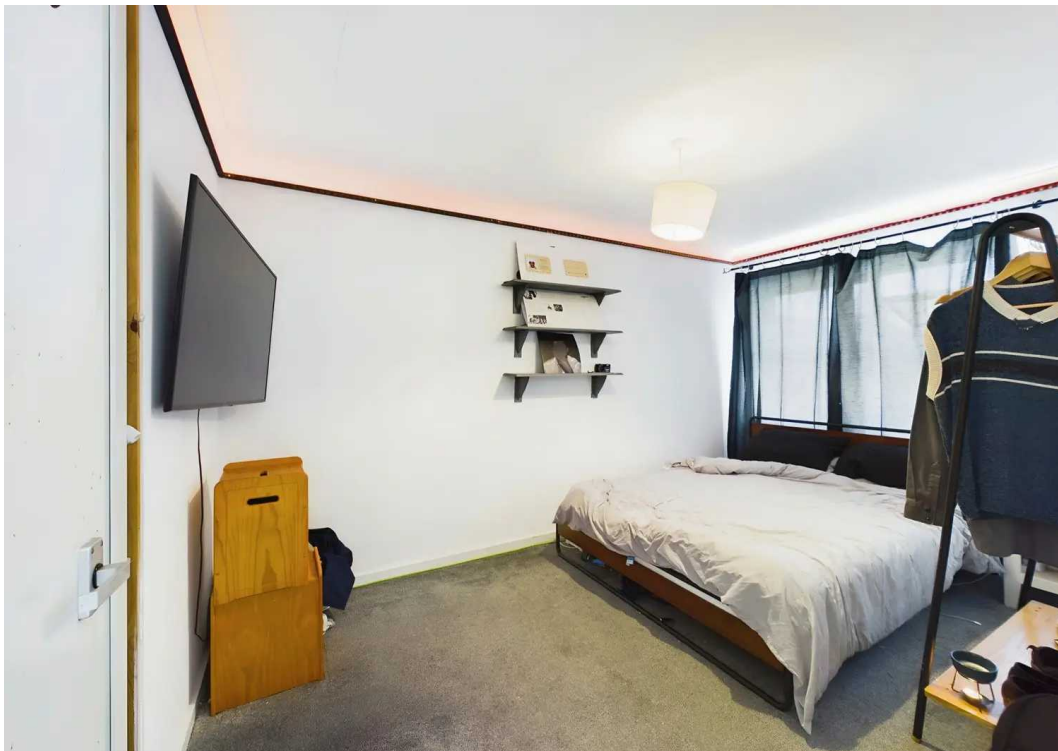
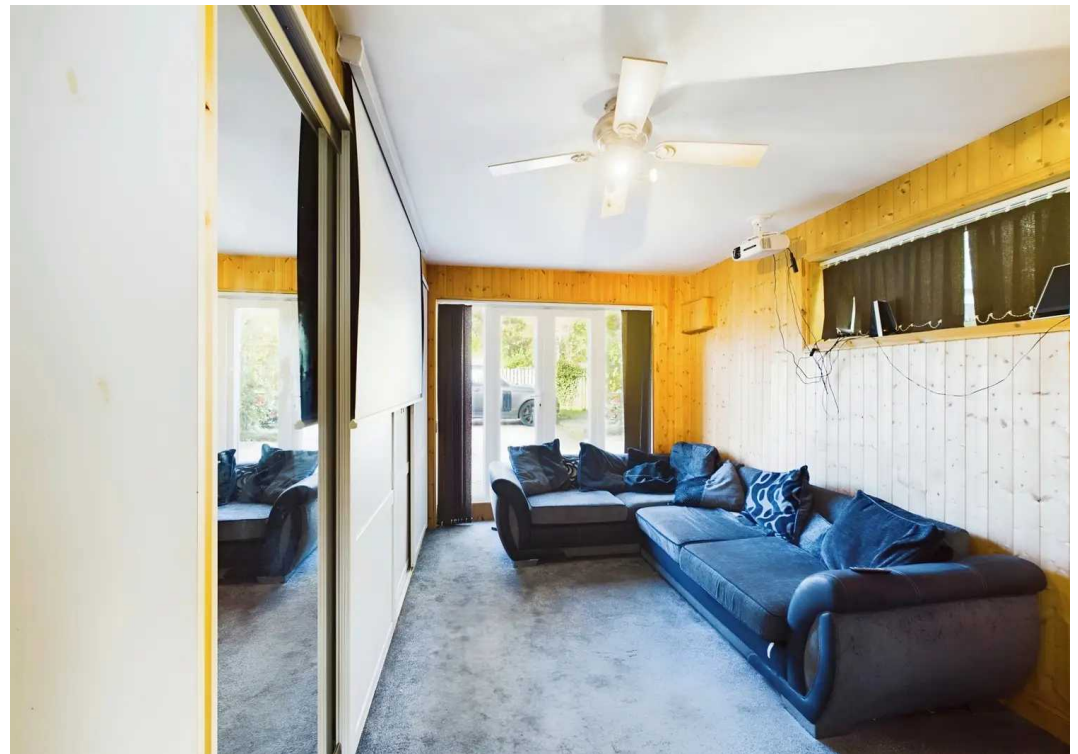
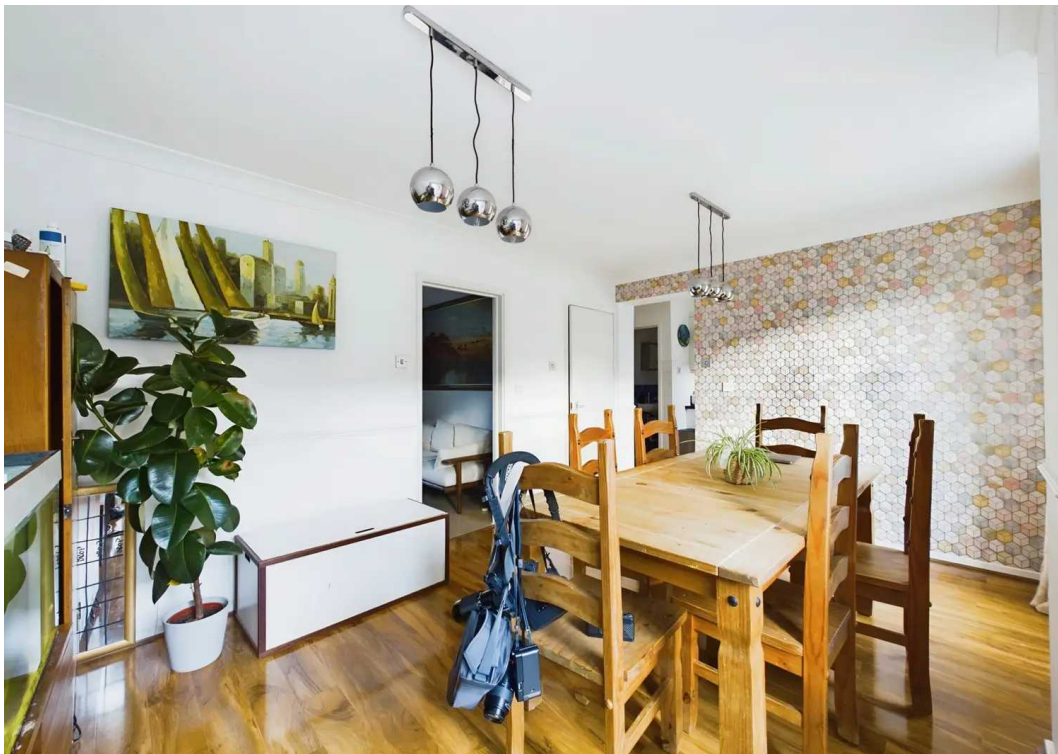
We are pleased to present this impressive 4 bedroom semi-detached house, situated in a highly sought-after cul-de-sac location. This extended family home offers ample living space and a versatile layout, making it the ideal residence for growing families.

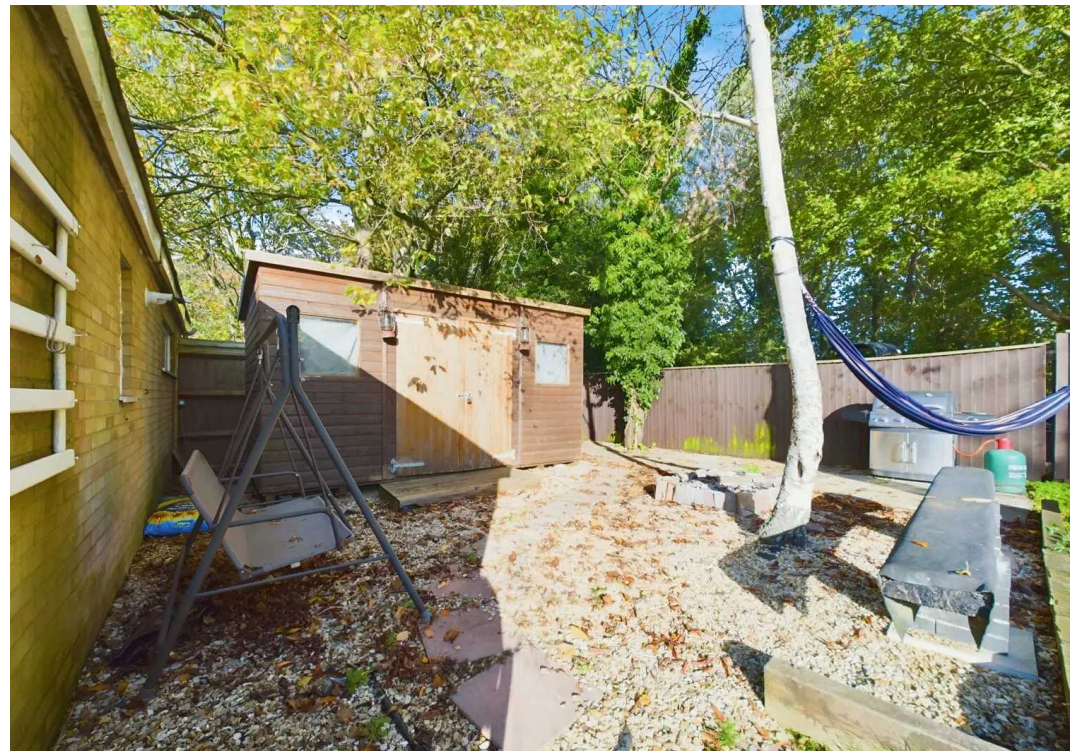
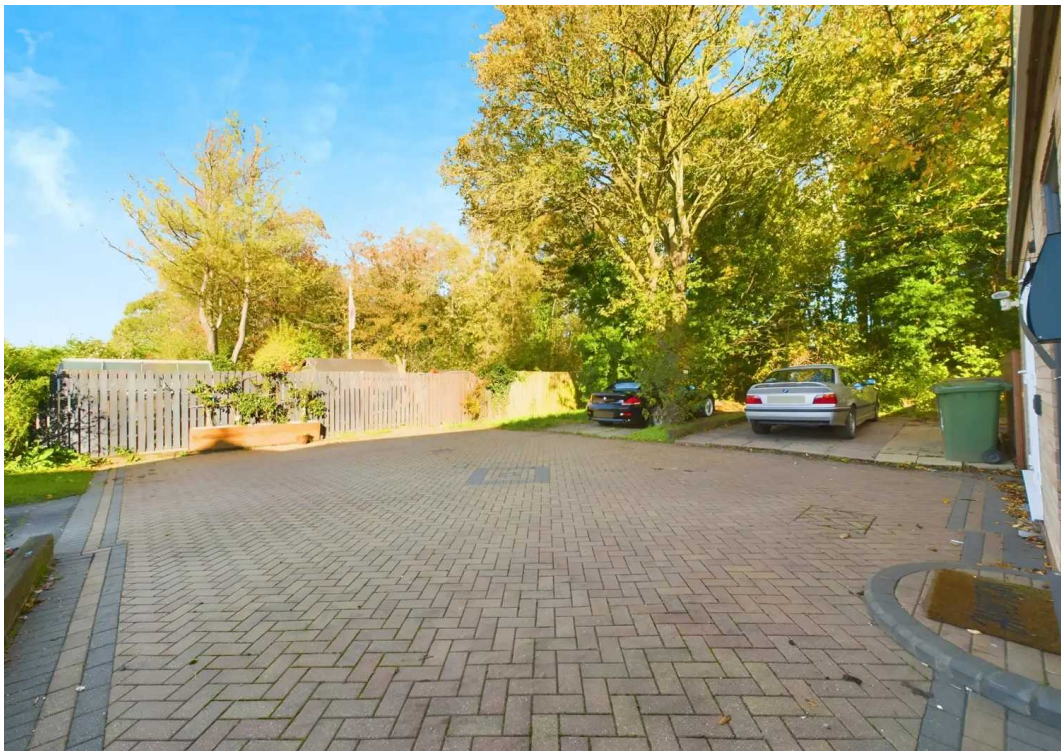
Council Tax band: B

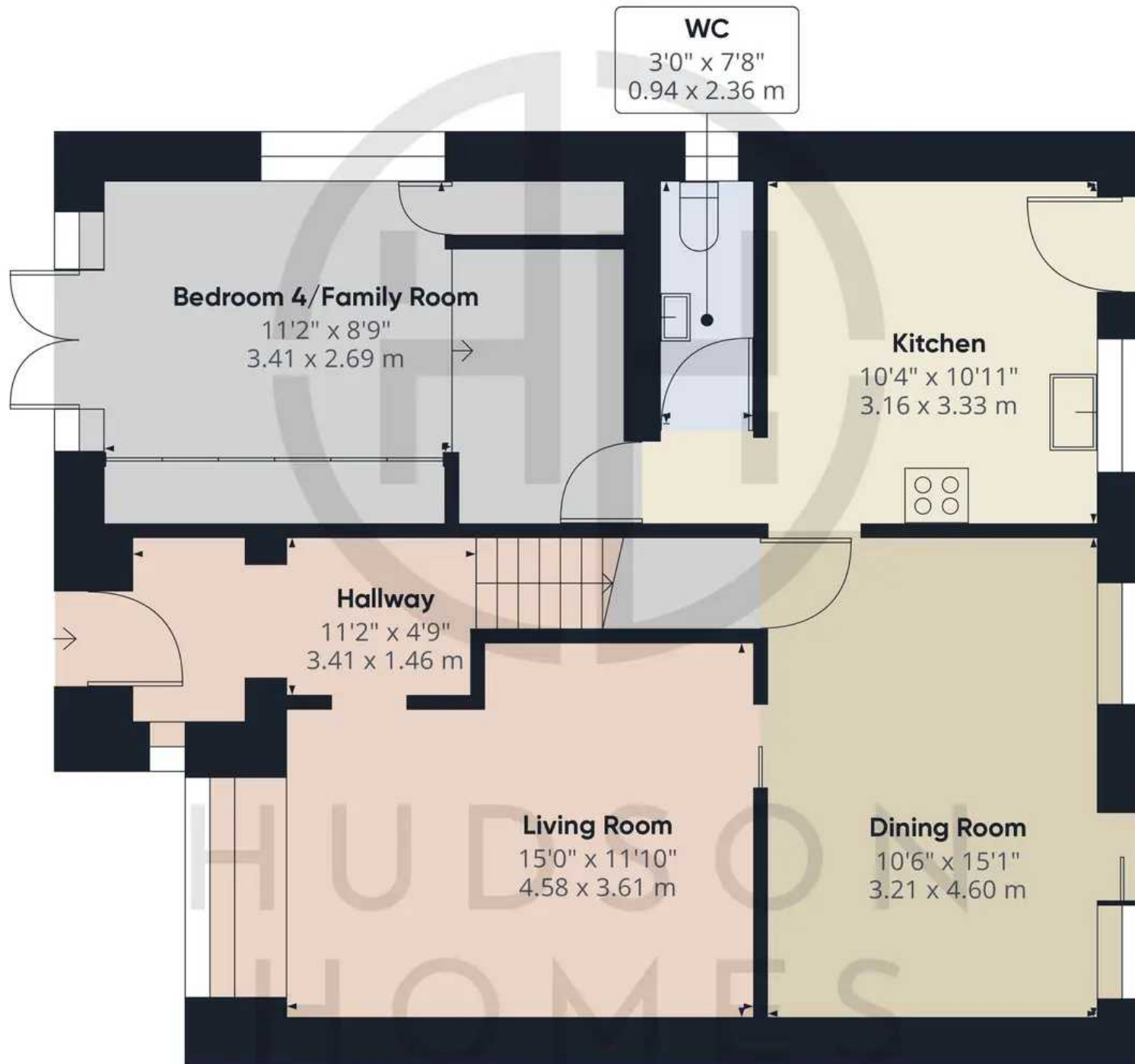
Tenure: Freehold

- Cul-De-Sac Location
- Extended Family Home
- Four Bedrooms/Extra Reception Room
- Extended Plot With Ample Parking
- Two Reception Rooms & Kitchen
- Sizeable Rear Garden









Approximate total area¹⁾

766.41 ft²

71.2 m²

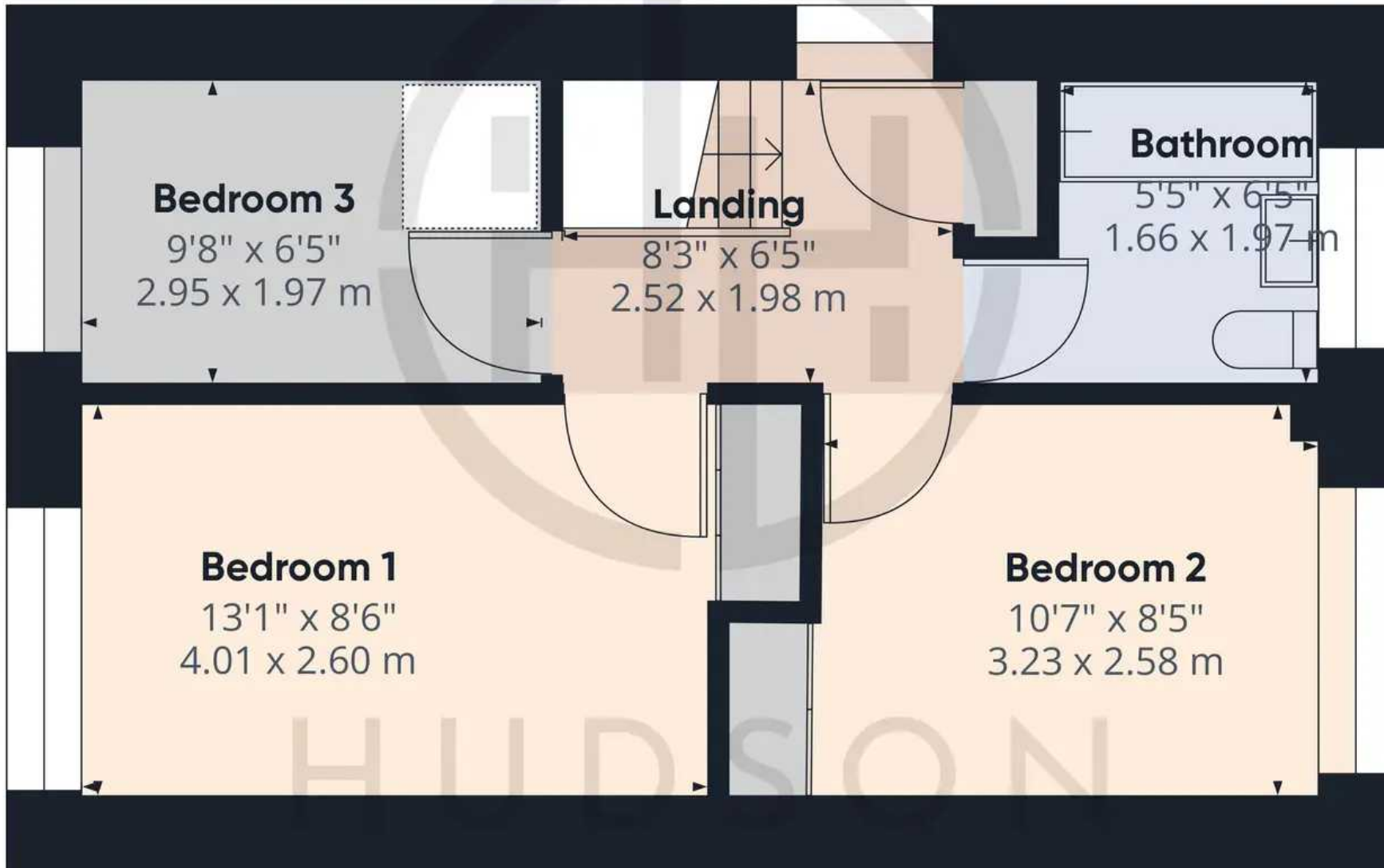
Excluding balconies and terraces

While every attempt has been made to ensure accuracy, all measurements are approximate, not to scale. This floor plan is for illustrative purposes only.

GIRAFFE360



HUDSON
HOMES



Approximate total area⁰

366.01 ft²

34 m²

Excluding balconies and terraces

While every attempt has been made to ensure accuracy, all measurements are approximate, not to scale. This floor plan is for illustrative purposes only.

GIRAFFE360

Floor 1



Hudson Homes Estate Agents

122a Main Street, Yaxley - PE7 3LP

01733 788222

info@hudson-homes.co.uk

www.hudson-homes.co.uk/

