

Love Homes



The Ridgeway, Flitwick, Bedfordshire, MK45 1DH

Welcome to this exquisite detached property, a true gem crafted in 2021 by the esteemed Mac & Berg developments, known for their unwavering commitment to detail and top-tier construction. Nestled within an exclusive enclave of just three residences, this home is discreetly tucked away behind remote-controlled private gates, ensuring both security and seclusion. The property is conveniently located approximately 0.6 miles from the amenities of Flitwick town centre, the train station and local school.



This property is presented by Duncan Stead - a Love Homes property expert with over 25 years' experience.

Find out more about this property by scanning the QR code.



0.6m



3



2



2

Tenure: Freehold

Council Tax: E

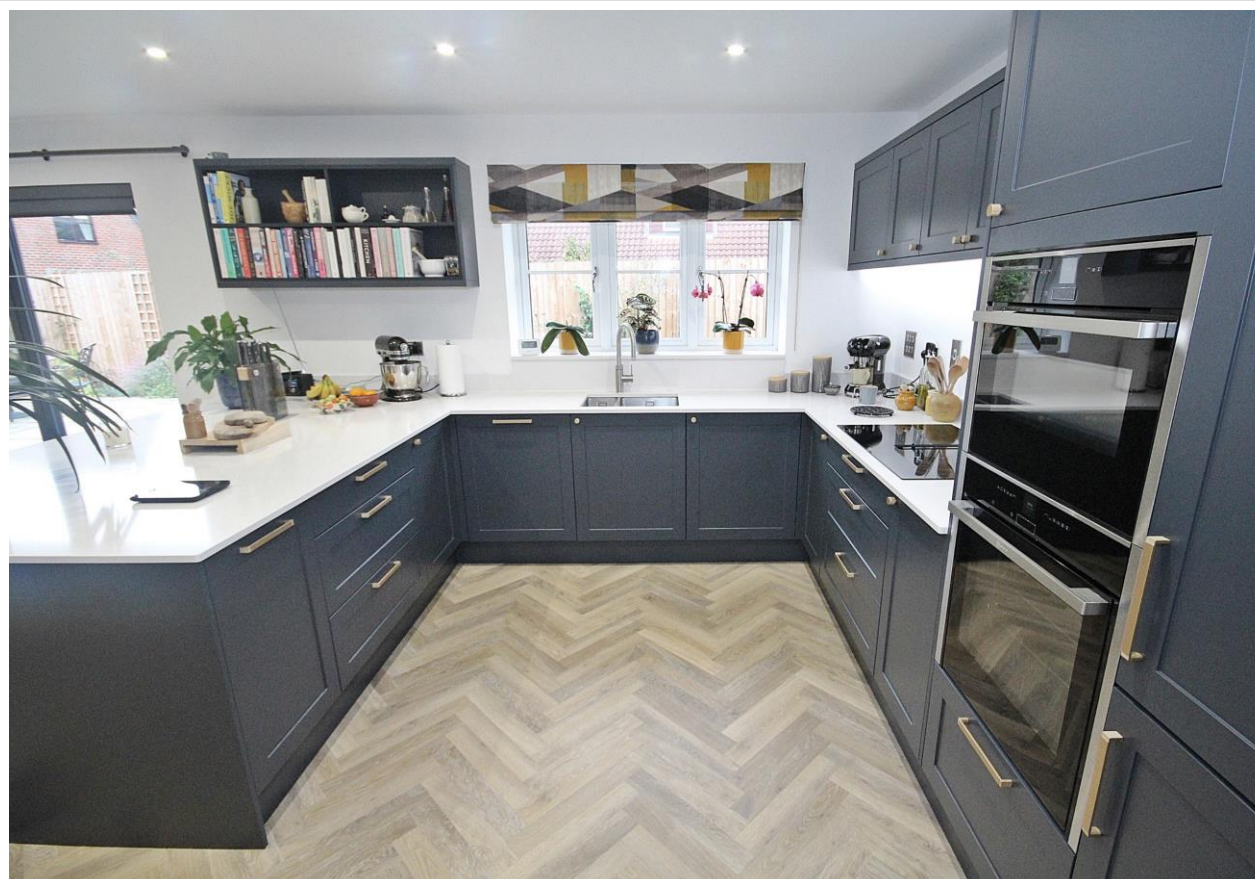
Flitwick & Ampthill 01525 713111



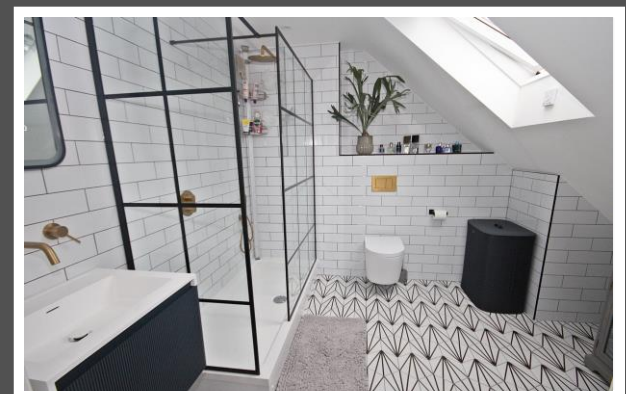
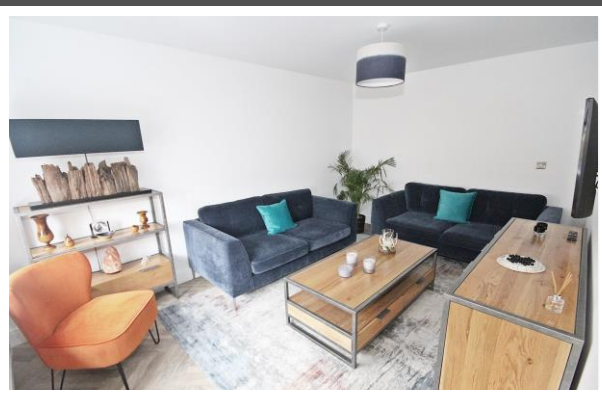
Barton-le-Clay and Luton 01582 882440



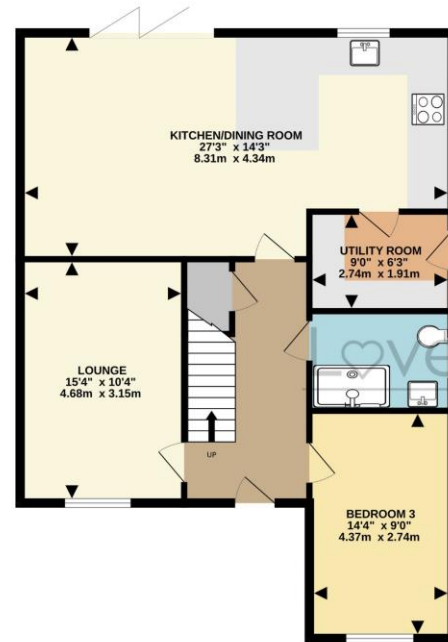
Biggleswade & Sandy 01767 669222



As you step through the welcoming entrance hall, a sense of luxury unfolds. The ground floor boasts a stunning 27'3" open-plan kitchen/dining room, a masterpiece featuring bi-fold doors that seamlessly connect the indoors with the rear garden. Extensive Quartz worktops and a convenient breakfast bar, complemented by integrated "Neff" appliances, including a dishwasher, double oven, two full-height fridge/freezers, a venting induction hob and a "Quooker" hot water tap. A well-appointed utility room harmonizes with the kitchen's elegance. The living room, a double bedroom, and a chic downstairs shower room complete this level all adorned with the sophistication of Herringbone style Karndean flooring.



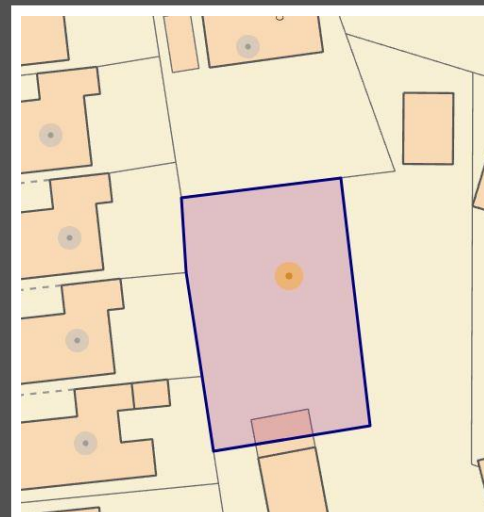
GROUND FLOOR
883 sq.ft. (82.0 sq.m.) approx.



1ST FLOOR
559 sq.ft. (52.0 sq.m.) approx.



Score	Energy rating	Current	Potential
92+	A		92 A
81-91	B	83 B	
69-80	C		
55-68	D		
39-54	E		
21-38	F		
1-20	G		



These particulars are set out as a general outline in accordance with the Property Misdescriptions Act (1991) only for the guidance of intending purchasers or lessees, and do not constitute any part of an offer or contract. Details are given without any responsibility, and any intending purchasers, lessees or third parties should not rely on them as statements or representations of fact but must satisfy themselves by inspection or otherwise as to the correctness of each of them. We have not carried out a structural survey and the services, appliances and specific fittings have not been tested. All photographs, measurements, floor plans and distances referred to are given as a guide only and should not be relied upon for the purchase of carpets or any other fixtures or fittings. Gardens, roof terraces, balconies and communal gardens as well as tenure and lease details cannot have their accuracy guaranteed for intending purchasers. Lease details, service ground rent (where applicable) are given as a guide only and should be checked and confirmed by your solicitor prior to exchange of contracts. No person in the employment of Love Homes has any authority to make any representation or warranty whatever in relation to this property. Purchase prices, rents or other prices quoted are correct at the date of publication and, unless otherwise stated, are exclusive of VAT. We retain the copyright in all advertising material used to market this Property. All information is as advised by the seller and subject to change. Council tax bands can be subject to change by the local council.

5 The Russell Centre, Coniston Road, Flitwick, MK45 1QY
Tel: 01525 713111

Email: flitwick@lovehomes.uk

www.lovehomes.uk



Love Homes