



6 Salem Road

Bayswater, W2 4BU

6 Salem Road is an attractive "Art Deco Style" industrial building, with original crittal windows and other original features

Key Points

- LED lighting
- Air Conditioning
- Original herringbone timber parquet flooring
- Exposed steels
- Fitted Kitchenette
- Fully cabled with fibre connectivity
- Video Entry Phone System
- WC's & Shower/changing facilities





Availability

Floor	sq ft	sq m	Availability
2 nd	3,130	290.78	Available
Ground	3,692	343	Ground & LG
Lower Ground	3,452	320.70	only available together
Total	10,274	1,103.13	

Description

6 Salem Road is an attractive “Art Deco Style” industrial building located on Salem Road, the G&LG floor is offered as a fully fitted, self-contained unit.

The 2nd floor benefits from lofty ceilings, skylights and steel roof trusses.

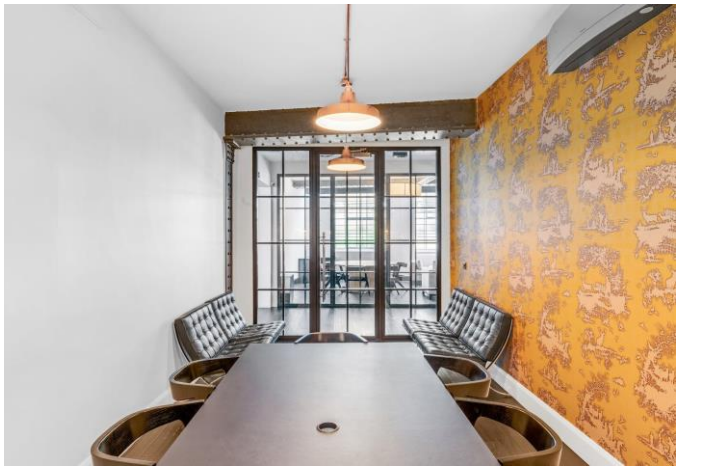
Terms

Available on new leases from the freeholder.

Rents from £35-52.50 per sq ft



Ground floor



Further Information

Location

Within the vibrant Bayswater locality, in close proximity of both Queensway, Notting Hill and within a stone's throw of London's iconic Hyde Park. The regeneration of Queensway and the soon to deliver The Whiteley, will see new and exciting retailers, food & beverage offerings and the UK's first six senses hotel.

Contact

**EDWARD CHARLES
& PARTNERS W1**
CHARTERED SURVEYORS

frost
meadowcroft
020 8748 1200

Ian Bradshaw
07468 525486
ibradshaw@edwardcharles.co.uk

Andrew Okin
07887 714 491
aokin@edwardcharles.co.uk

Simon Kibble
07774 646 393
skibble@frostmeadowcroft.com

Jack Realey
07879 228 991
jrealey@frostmeadowcroft.com

edwardcharles.co.uk

frostmeadowcroft.com

