



6 Salem Road

Bayswater, W2 4BU

6 Salem Road is an attractive "Art Deco Style" industrial building, with original crittal windows and other original features

Key Points

- LED lighting
- Air Conditioning
- Original herringbone timber parquet flooring
- Exposed steels
- Fitted Kitchenette
- Fully cabled with fibre connectivity
- Video Entry Phone System
- WC's & Shower/changing facilities





Availability

Floor	sq ft	sq m	Availability	Rent
2 nd	3,130	290.78	Available	£55
1 st	3,150	292.64	Let	
Ground	3,692	343	Available	£45
Lower Ground	3,452	320.70	Available	£25
Total	13,424	1,247.13		

Description

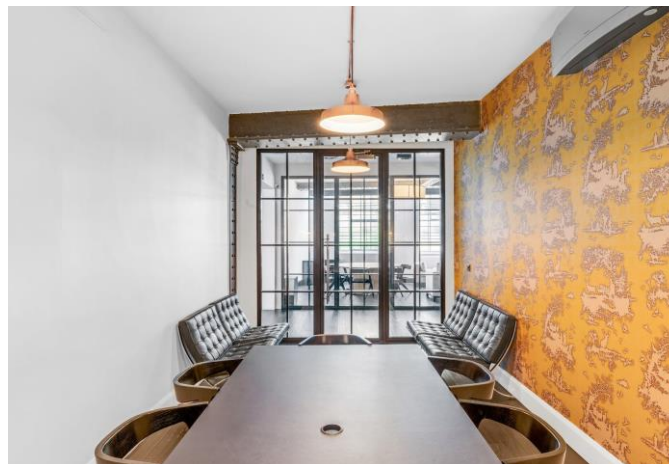
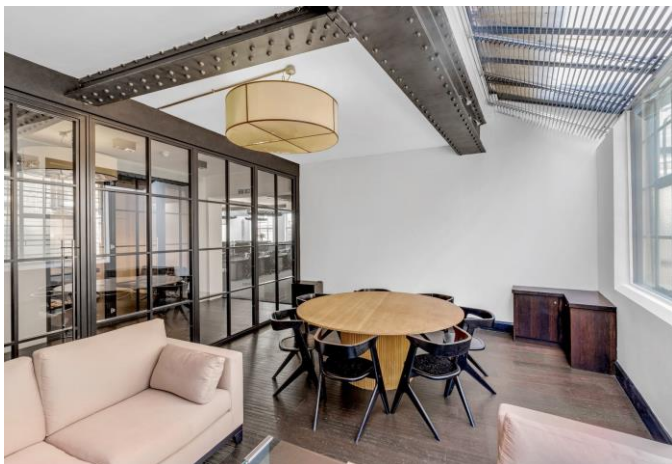
6 Salem Road is an attractive “Art Deco Style” industrial building located on Salem Road, the G&LG floor is offered as a fully fitted units. The 2nd floor benefits from lofty ceilings, skylights, and steel roof trusses. In summer 2024, the common areas and second floor of 6 Salem Road will undergo a comprehensive refurbishment to enhance both functionality and aesthetic appeal, creating vibrant, collaborative spaces designed to foster productivity and collaborating.

Terms

Available on new flexible leases from the freeholder.



Ground floor



Further Information

Location

Within the vibrant Bayswater locality, in close proximity of both Queensway, Notting Hill and within a stone's throw of London's iconic Hyde Park. The regeneration of Queensway and the soon to deliver The Whiteley, will see new and exciting retailers, food & beverage offerings and the UK's first six senses hotel.

Contact

EDWARD CHARLES
& PARTNERS W1
CHARTERED SURVEYORS

frost
meadowcroft
020 8748 1200

Ian Bradshaw
07468 525486
ibradshaw@edwardcharles.co.uk

Andrew Okin
07887 714 491
aokin@edwardcharles.co.uk

Simon Kibble
07774 646 393
skibble@frostmeadowcroft.com

Jack Realey
07879 228 991
jrealey@frostmeadowcroft.com

edwardcharles.co.uk

frostmeadowcroft.com

