



MILE



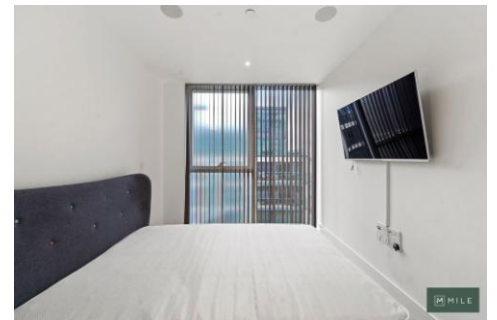
MILE



MILE



MILE



MILE

Battersea Reach, Juniper Drive £4,500 pcm

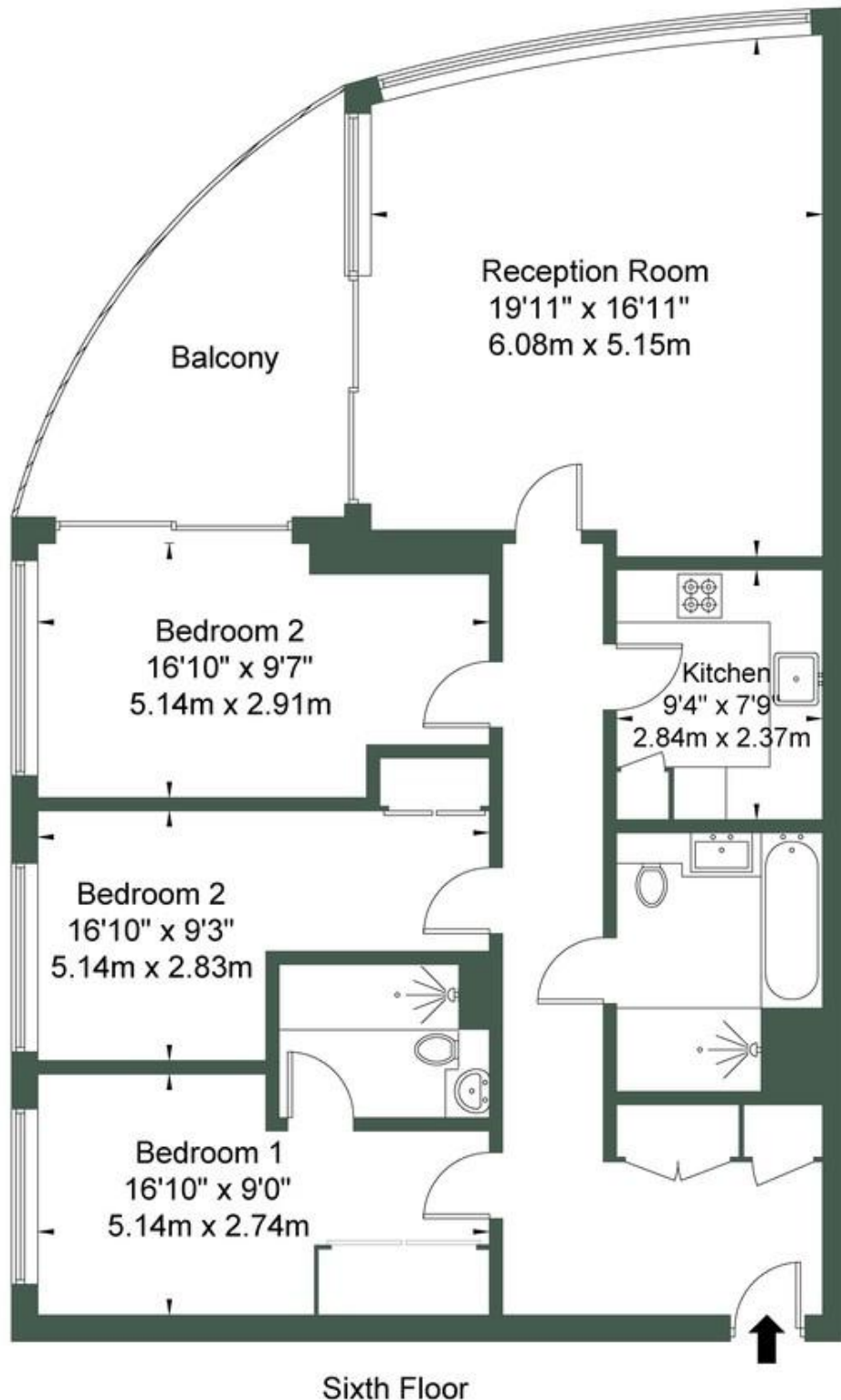
Set within the prestigious and exclusive Battersea Reach Development, this flawless three bedroom two bathroom apartment offers beautiful river views across almost 1,200 sq ft of living space!

If this wasn't enough, residents benefit from a private balcony as an annex to the spacious open plan kitchen living area with top appliances included, heated bathroom floors and three well sized bedrooms.

- Spacious
- Exclusive residential development
- 24 hour concierge
- Private balcony
- River Views
- Excellent Condition
- Three decent sized bedrooms
- Two Bathrooms with underfloor heating
- High Spec
- Part Furnished

Pinnacle House, Juniper Drive SW18 1JE

Approx Gross Internal Area = 107.1 sq m / 1152 sq ft



Sixth Floor

Ref

Copyright



The Floor plan is not to scale and measurements and areas shown are approximate and therefore should be used for illustrative purposes only. The plan has been prepared in accordance with the RICS code of Measuring Practice and whilst we have confidence in the information produced it must not be relied on. If there is any aspect of particular importance, you should

MONEY LAUNDERING REGULATIONS 2003: Intending purchasers will be asked to produce identification documentation at a later stage and we would ask for your co-operation in order that there will be no delay in agreeing the sale.

General: While we endeavour to make our sales particulars fair, accurate and reliable, they are only a general guide to the property and, accordingly, if there is any point which is of particular importance to you, please contact the office and we will be pleased to check the position for you, especially if you are contemplating travelling some distance to view the property.

Measurements: These approximate room sizes are only intended as general guidance. You must verify the dimensions carefully before ordering carpets or any built-in furniture.

Services: Please note we have not tested the services or any of the equipment or appliances in this property, accordingly we strongly advise prospective buyers to commission their own survey or service reports before finalising their offer to purchase.