



23 Coppice Way, Harrogate
Harrogate

Guide Price £260,000



MYRINGS
Harrogate's Family Estate Agent



23 Coppice Way

Harrogate, Harrogate

Offered with no onward chain, this two bedroom semi-detached bungalow located in a desirable residential area close to Harrogate's town centre benefits from having extended living space and a private rear garden.

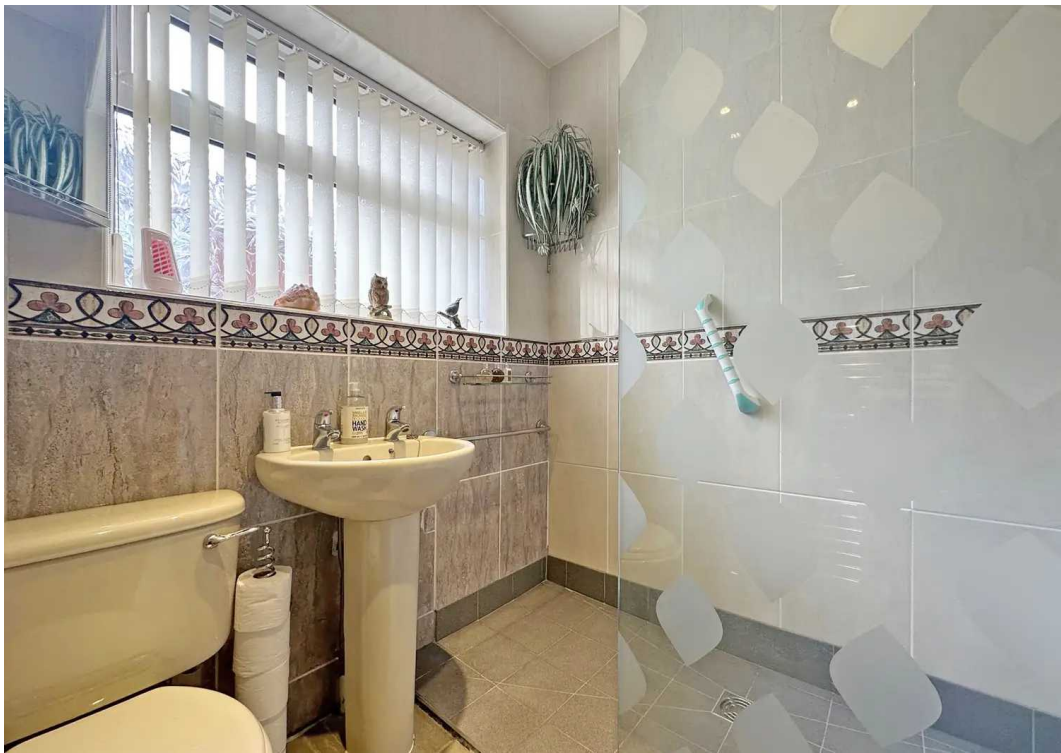
Council Tax band: C

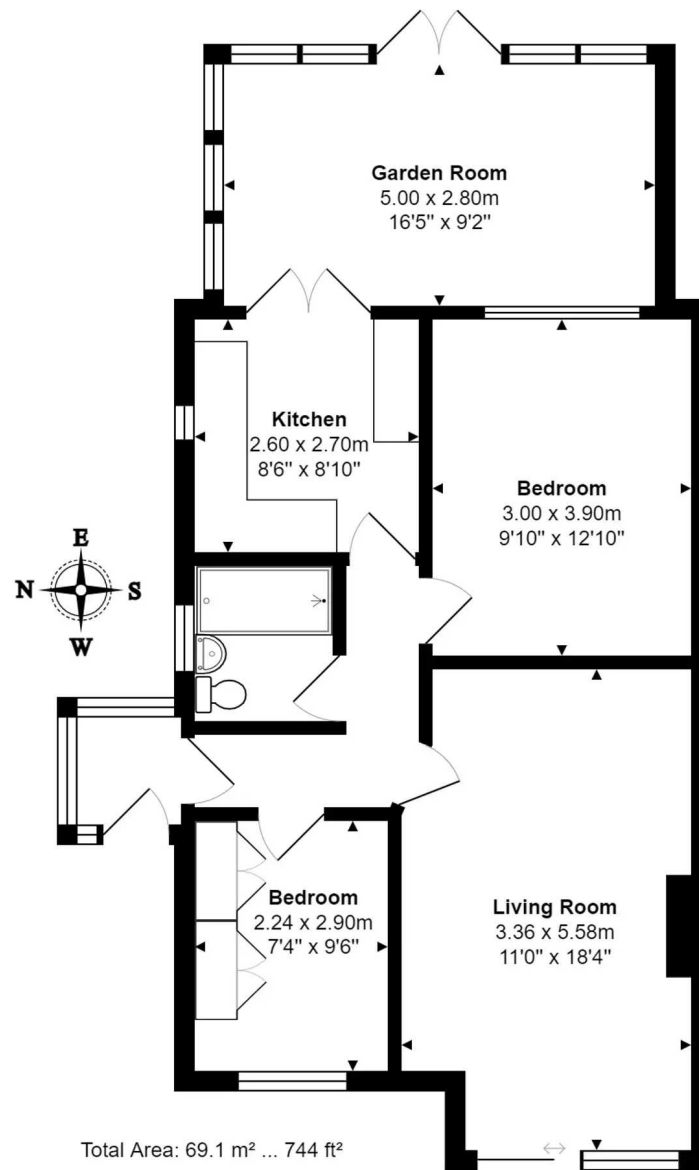
Tenure: Freehold

- 2 BEDROOMS
- CONVENIENT POSITION
- LOW MAINTENANCE GARDEN
- EXTENDED LIVING SPACE
- PARKING FOR 2 VEHICLES
- CLOSE TO TOWN CENTRE



MYRINGS





All measurements are approximate and for display purposes only.





Myrings Estate Agents

Myrings Estate Agents Ltd, 10 Princes Square - HG1 1LX

01423
566400

• enquiries@myringsestateagents.com • <http://myringsestateagents.com/>

