



5 Burton Place, Brixham - TQ5 9JD

Guide Price **£296,500**





5 Burton Place

Brixham, Brixham

Hidden gem! Extended 3-bed 1930's semi with spacious interior, large SW facing garden, driveway parking, and garage. Peaceful private road location. Energy-efficient with gas heating and double glazing. Ideal for families seeking a tranquil home with ample living space and sunny outdoor oasis. EPC D

Tenure: Freehold

EPC Energy Efficiency Rating: D

EPC Environmental Impact Rating: E

- Extended 1930's semi-detached home situated in a quiet tucked away location
- Living room leading to a separate dining room
- Spacious kitchen
- Three double bedrooms
- Bathroom plus an additional shower room
- Large South West facing rear garden
- Driveway parking for two vehicles plus a single garage
- Situated on a private road
- Gas central heating & uPVC double glazing
- EPC rating - D

5 Burton Place

Brixham, Brixham

The property is situated less than a half a mile from Brixham town centre which boasts an array of shops, amenities and facilities as well as the picturesque harbour, surrounded by a further array of boutique shops, bars and restaurants. Primary and Secondary schooling are less than half a mile distant, as is Brixham swimming pool and rugby club. The main 12 bus services can be found in the town centre with connections to the neighbouring towns of Paignton and Torquay.

Absolute Sales & Lettings

Absolute Sales & Lettings, 36 Fore Street – TQ5 8DZ

01803 214214

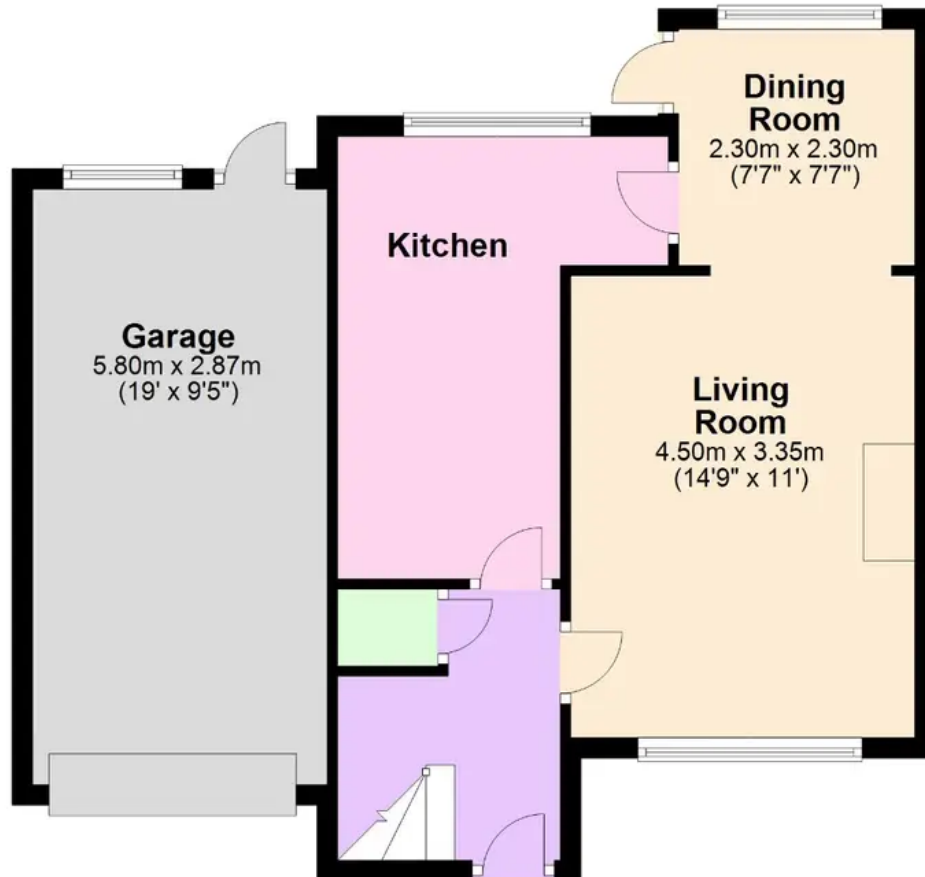
brixham@movewithabsolute.co.uk

movewithabsolute.co.uk/



Ground Floor

Approx. 55.5 sq. metres (597.1 sq. feet)



First Floor

Approx. 46.2 sq. metres (496.9 sq. feet)



Total area: approx. 101.6 sq. metres (1094.0 sq. feet)