



Marina Court Heath Road, Brixham, TQ5 9AT

Fixed Price £450,000



3 Marina Court Heath Road

Brixham

Nestled on the highly sought-after Berry Head side of town, this stunning 3 bedroom terraced house set over 3 levels offers an enviable coastal lifestyle with exceptional sea views overlooking picturesque Torbay. As you step inside, you are greeted by a light and spacious open plan lounge/diner and a modern fitted kitchen with ample storage space and integrated appliances, making it a pleasure to cook and dine in.

The property boasts three generous double bedrooms, a family bathroom/WC and a ground floor shower room/WC. Outside and you will find a private decked area and balcony extending from the large lounge, ensuring you can fully immerse yourself in the coastal atmosphere as well as beautifully maintained communal gardens.

This exceptional property blends coastal living with modern comforts, offering both impressive interior spaces and delightful outside areas. With its prime location, exceptional views, and well-appointed features, this terraced house is a rare find that is sure to appeal to those seeking a home where they can truly appreciate the beauty of the seaside.



COMMUNAL GARDEN

Extensive, well stocked and maintained communal gardens including pergolas, flower beds rockeries and a large lawned area.

GARDEN

Private decked area leading from ground floor bedroom

BALCONY

Private balcony leading from the large lounge

CAR PORT

1 Parking Space

Car port for one car as well as ample parking to the front and side of the property



Marina Court Heath Road

Brixham, Brixham

The property is positioned approximately half a mile to three quarters of a mile distance from Brixham town centre, which boasts an array of shops, facilities and amenities, as well as the picturesque Brixham harbour, surrounded by boutique shops, bars and restaurants. There is a bus service on Wall Park Road which links to the town centre where the main bus station is located and offers great connections to the neighbouring towns of Paignton and Torquay. Both primary and secondary schooling are located within half a mile and the local convenience store is also approximately a third of a mile distance. The stunning Berry Head country park is also approximately one mile away with its Napoleonic forts, which also gives access to the picturesque South West coastal path.

Council Tax band: C

Tenure: Freehold

EPC Energy Efficiency Rating: D

- Marine townhouse set over 3 levels
- Exceptional sea views across Torbay
- Open plan lounge/diner
- Modern fitted kitchen
- Three double bedrooms
- Family bathroom & ground floor shower room
- Private composite decked area & balcony
- Covered carport & ample parking to the front and the side of the property
- uPVC double glazing & gas central heating





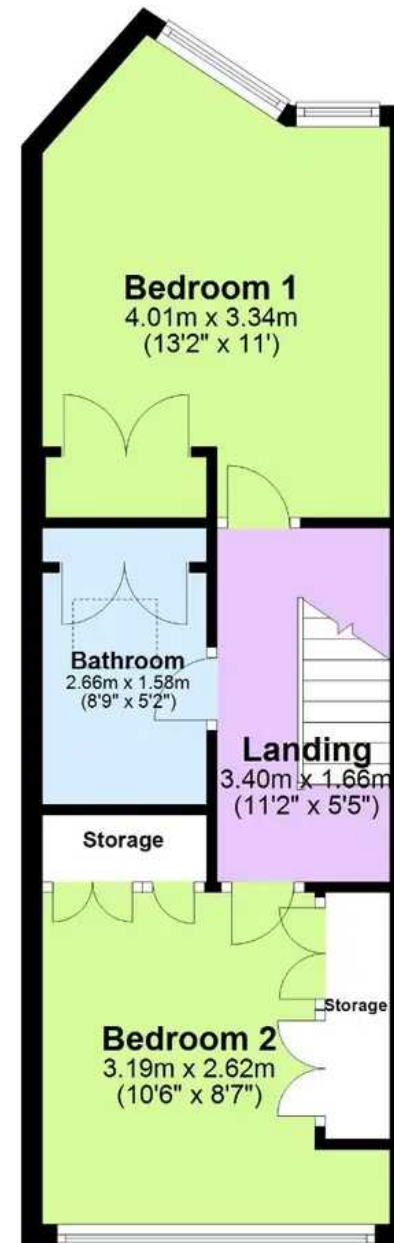
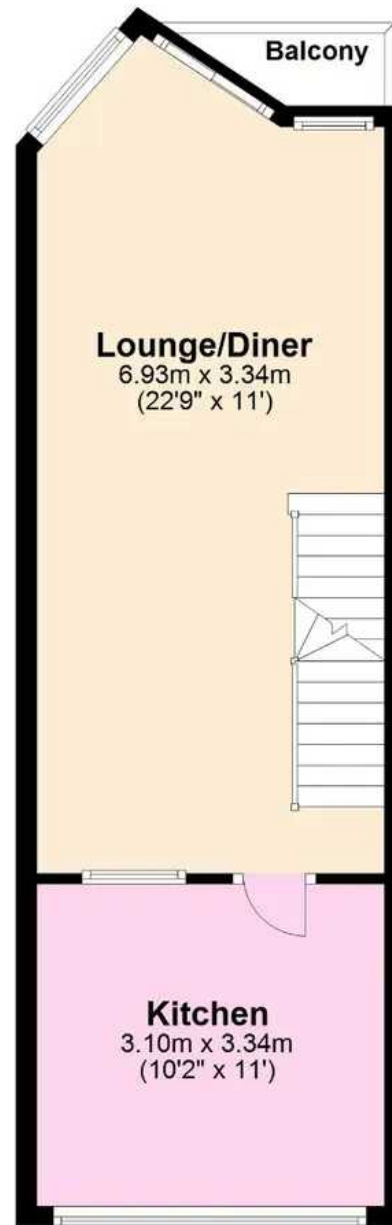
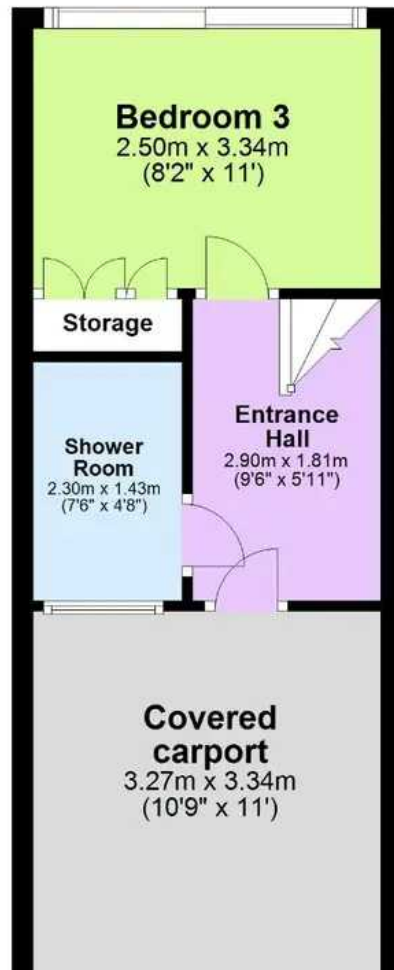
ABSOLUTE



First Floor

Second Floor

Ground Floor



Total area: approx. 101.4 sq. metres (1091.1 sq. feet)

Approx
Plan produced using PlanUp.





Absolute Sales & Lettings

Absolute Sales & Lettings, 36 Fore Street - TQ5 8DZ

01803 214214

brixham@movewithabsolute.co.uk

movewithabsolute.co.uk/

