



ABSOLUTE

Astoria Court, Belle Vue Road, Paignton - TQ4 6ES
£315,000



Astoria Court, Belle Vue Road

Paignton

A newly established select development ideally situated for enjoying the Roundham area of Paignton. Apartment two is located on the first floor within the original converted building and retains many character features. There is a partial sea from the living area and private outside space.

Tenure: Leasehold

- Newly converted luxury apartment within select development
- Sea view from living space
- Contemporary fitted Italian designer kitchen
- Private outside courtyard area
- Contemporary fitted shower room
- High specification throughout
- Allocated parking space
- Perfect location for access to amenities on the harbour side



Astoria Court, Belle Vue Road

Paignton

Astoria Court is located in the highly desirable location of Roundham, noted for its picturesque harbour side, thatched cottages and village ambience. The area offers restaurants, cafes and bars plus access to the South West coast path and blue flag beaches. A haven for those that love to paddle board, sail or enjoy cycling or walking the promenade to Paignton or cliff path to Goodrington.

Absolute Sales & Lettings

Absolute Sales & Lettings Ltd, 13 Ilsham Road - TQ1 2JG

01803 214214

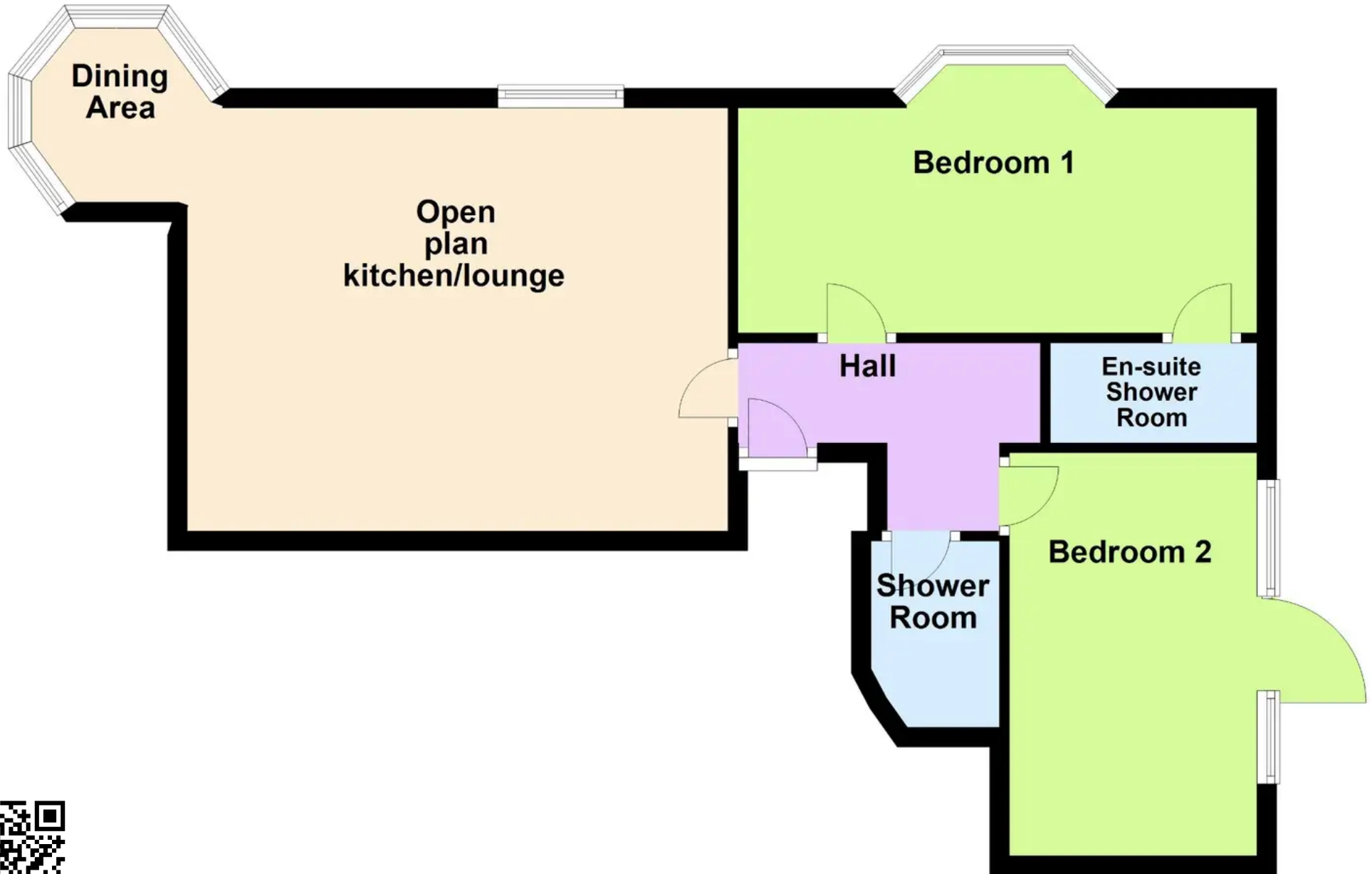
torquay@movewithabsolute.co.uk

movewithabsolute.co.uk/



Ground Floor

Approx. 59.2 sq. metres (636.8 sq. feet)



Total area: approx. 59.2 sq. metres (636.8 sq. feet)