



North Street, Hornchurch, Essex, RM11 1SU

£1,600 pcm

TWO DOUBLE BEDROOMS • TWO BATHROOMS • SPACIOUS LOUNGE • MODERN KITCHEN AND BATHROOM • OFF STREET PARKING • ZERO DEPOSIT OPTION AVAILBLE • COUNCIL TAX BAND - B • EPC RATING - D • INITIAL TENANCY TERM - 12 MONTHS • TENANCY DEPOSIT - £1,845.00



Accord is delighted to offer this TWO BEDROOM, SPLIT LEVEL MAISONETTE which has been updated to a high standard. The property is conveniently situated for Emerson Park station and within walking distance of Hornchurch Town Centre. The accommodation is modern and spacious comprising of a spacious lounge, a master bedroom with en-suite shower room, family bathroom, kitchen with appliances and second bedroom to entire top floor.

Council Tax Band - B

Tenancy Deposit - £1,845.00

EPC Rating - D

Initial Tenancy Term - 12 Months



Lounge

10' 10" x 19' 5" (3.31m x 5.92m)

Kitchen

10' 6" x 9' 6" (3.19m x 2.90m)

Bathroom

7' 2" x 4' 0" (2.19m x 1.23m)

Bedroom One

16' 1" x 16' 3" (4.90m x 4.95m)

Bedroom Two

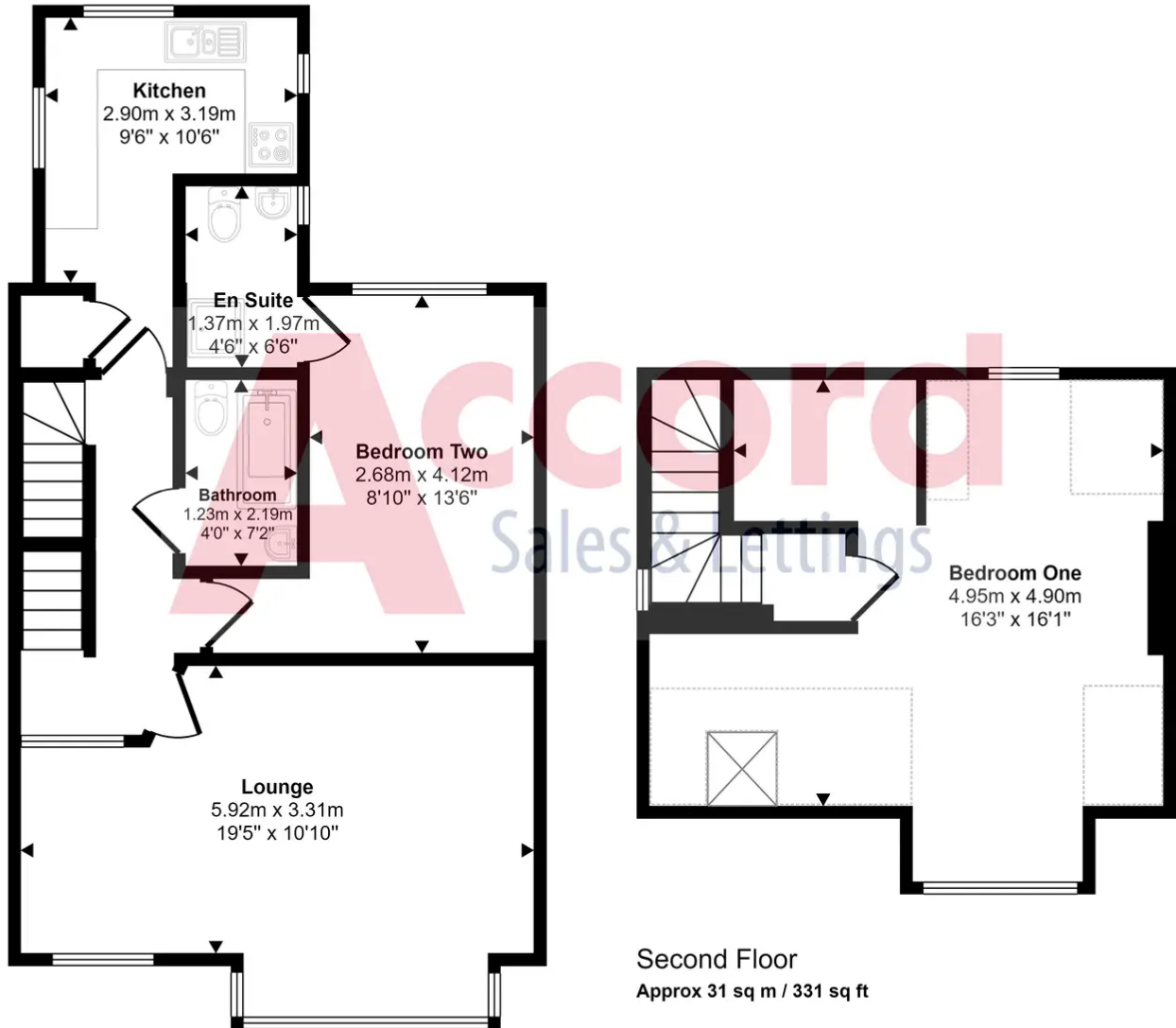
13' 6" x 8' 10" (4.12m x 2.68m)

En Suite

6' 6" x 4' 6" (1.97m x 1.37m)



Approx Gross Internal Area
87 sq m / 942 sq ft



☐ Denotes head height below 1.5m

This floorplan is only for illustrative purposes and is not to scale. Measurements of rooms, doors, windows, and any items are approximate and no responsibility is taken for any error, omission or mis-statement. Icons of items such as bathroom suites are representations only and may not look like the real items. Made with Made Snappy 360.

You can include any text here. The text can be modified upon generating your brochure.