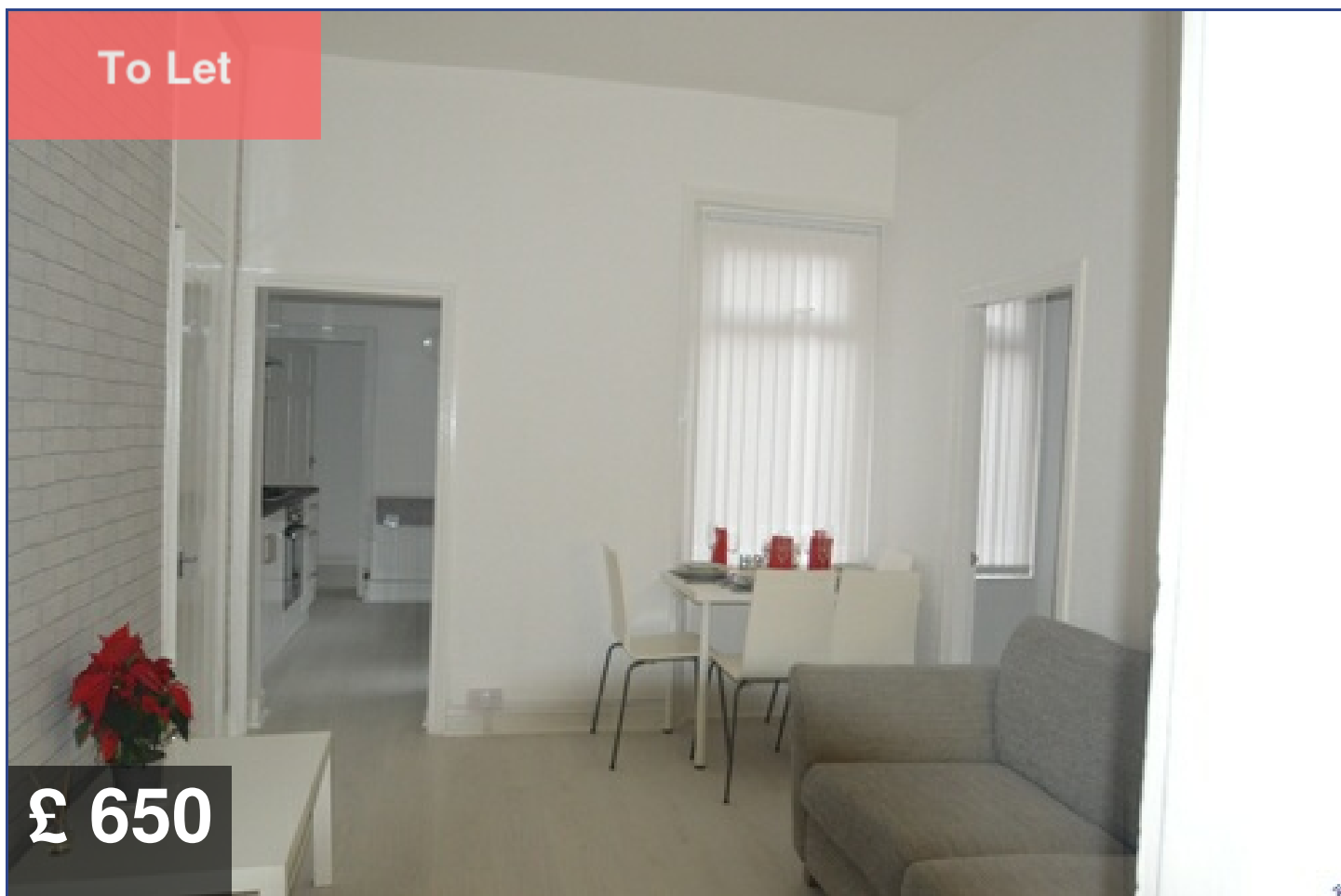




SEALPROPERTIES
RENTAL MARKET SPECIALISTS

**10 Watt Street
Gateshead
NE8 4TU**



Stunning 2 Bedroom Ground Floor Flat

Beds : 2

Bath : 1

Parking : On Street



0191 580 5900



WWW.SEALPROPERTIES.CO.UK



INFO@SEALPROPERTIES.CO.UK

Contact Us

Agent Information

Emma

0191 5805900

emma@sealproperties.co.uk

167/169 Saltwell Road

Gateshead, NE8 4TJ

sealproperties.co.uk



Scan Me

Scan Me For Property Details



Quote Me

Quote This Reference Number For
More Information

SP22110808

Disclaimer

Whilst every effort is made to ensure the contents of this brochure are accurate and true, the particulars are set out as a general outline for guidance purposes only and do not constitute any part of an offer or contract. Interested Parties should not rely on them as statements of representation of fact, but instead must satisfy themselves by inspection or otherwise as to their accuracy.

A Holding Fee equivalent to one week's rent is payable. Please contact the office for more details.

Energy Performance Certificate (EPC) information is available upon request. Please contact the office.

Gallery



Description

SEAL Properties are delighted to welcome to the rental market this 2 bedroom ground floor flat on Watt Street. The property briefly comprises of 2 bedrooms, living room, kitchen, bathroom and a private yard to the rear.

Specification

GROUND FLOOR

Living Room

Spacious living room with a double glazed window overlooking the yard. Newly redecorated throughout with furnishings such as sofa and coffee table.

Kitchen

New & modern kitchen with washing machine, fridge freezer and built in oven and hob. It has double glazing and access to the yard.

Bedroom One

The front of the property has a spacious double bedroom with central heating radiator and double glazed windows. There is a new bed set with a mattress and bedding as well as a wardrobe.

Bedroom Two

The back of the property has a spacious single bedroom with central heating radiator and a double glazed window.

Bathroom

The bathroom has white painted walls and ceiling with a bath and overhead shower, low flush w/c and hand wash basin.

OUTSIDE

Rear

To the rear of the property is a private yard.