



65 Prince George Road

London

N16 8DL

£4,750 per calendar month

Super family house offering bright, freshly decorated accommodation midway between Stoke Newington High Street and Butterfield Green offered unfurnished and available from 01 January 2024



Property Features

- 4 Bedrooms •
- 3 Bathrooms •
- Fully equipped kitchen •
- Unfurnished •
- Available 01 January •

Full Description

Beautifully presented late Victorian family house located on this popular residential road running west from Stoke Newington High Street towards Newington Green and just two minutes walk to Butterfield Green. Very spacious and immaculate accommodation arranged over three main floors offering a most comfortable home on a very convenient location. There are 4 bedrooms, 3 bathrooms, an office, excellent living space and a lovely, well fitted kitchen/dining room fully equipped with Bosch and Neff appliances. This opens up onto a pretty, patio garden. Excellent local shops, bars and restaurants on both Stoke Newington Church Street and the High Street together with many transport link at Dalston. The property is available unfurnished from the 01 January 2024

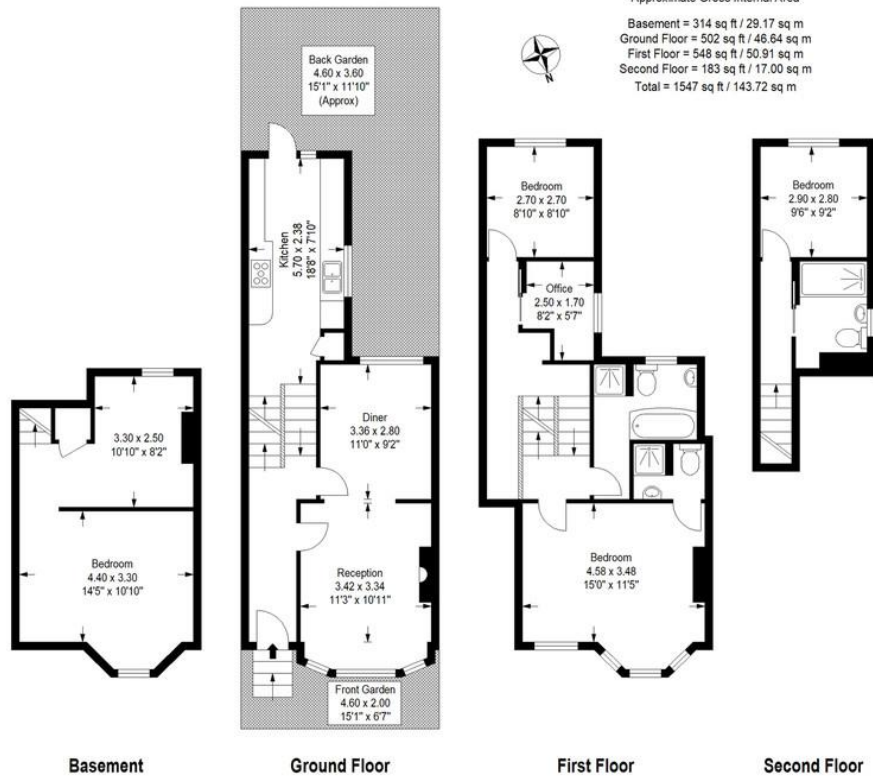




Prince George Road, London, N16

Approximate Gross Internal Area

Basement = 314 sq ft / 29.17 sq m
 Ground Floor = 502 sq ft / 46.64 sq m
 First Floor = 548 sq ft / 50.91 sq m
 Second Floor = 183 sq ft / 17.00 sq m
 Total = 1547 sq ft / 143.72 sq m



Measured according to RICS IPMS2. Floor plan is for illustrative purposes only and is not to scale. Every attempt has been made to ensure the accuracy of the floor plan shown, however all measurements, fixtures, fittings and data shown are an approximate interpretation for illustrative purposes only. 1 sq m = 10.76 sq feet.

Date: 20/11/2023

lpaplus.com

%epcGraph_c_1_263%

51 Stoke Newington Church
 Street
 London
 N16 0AR

www.julianreid.co.uk
rentals@julianreid.co.uk
 0207 923 8650

Agents Note: Whilst every care has been taken to prepare these sales particulars, they are for guidance purposes only. All measurements are approximate are for general guidance purposes only and whilst every care has been taken to ensure their accuracy, they should not be relied upon and potential buyers are advised to recheck the measurements